

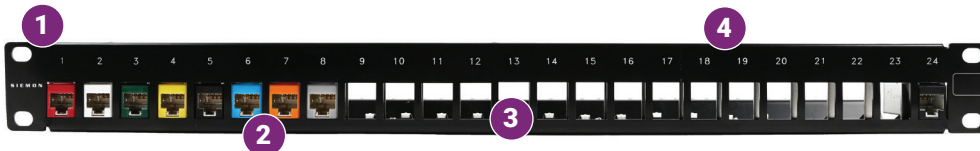
# Solution 6A Shielded Copper System

## Solution 6A Keystone Patch Panels

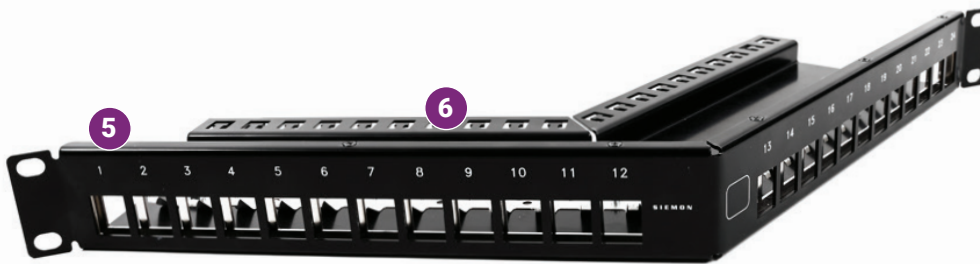
Regional Availability – International



Siemon's keystone category 6A shielded patch panels have been designed to be a flexible, modular termination solution for telecommunication rooms, data centers and larger consolidation point enclosures. These panels are part of our Solution 6A shielded system and are available in 24-port, 1U, flat and angled versions to support various configurations.



24-Port Flat Panel



24-Port Angled Panel

### 1. Standard Fit

The panels are designed to mount directly on standard 19-inch racks or cabinets.

### 2. Simplified Administration

Color-coded outlet bezels are available in 8 colors, allowing system administrators to easily differentiate and identify various networks.

### 3. Installation Friendly

The keystone modules easily snap into place, while the panels integrated grounding tabs assure each outlet is properly grounded without additional steps.

### 4. Port Identification

Bold port numbering stands out for quick identification of outlets.

### 5. Clean Aesthetics

Angled panel cover available for top of rack installation to keep dust and debris away from critical connections.

### 6. Rear Cable Manager

Built-in rear cable manager is available on both flat and angled patch panels.



### Get Started

Solution 6a patch panels are available empty and without outlets, or kitted with the relevant outlets in the box, ready to be terminated wherever required.



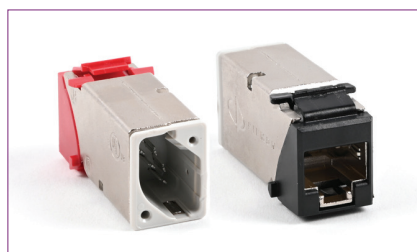
### Integrated Grounding

Each Solution 6A patch panel features integrated grounding via resilient ground tabs which are engaged as modules are inserted.



### Cable Management

The integrated rear cable manager ensures proper support and cable management practices for all installations.



### Compatible Outlets

All Solution 6A patch panels are compatible with Z-MAX® keystone style shielded outlets. They are also available with colored bezels to allow for simple color-coding of different services.



### Blank Modules

Quick-to-deploy module blanks are also available and can be used to reserve ports for future expansion.

# Product Information

## MECHANICAL – PANEL

<b>OPERATING TEMPERATURE</b>	-10 to 60 °C (14 to 140 °F)
<b>ECO-FRIENDLY FEATURES</b>	RoHS, Lead-free, Halogen-free, PVC-free
<b>DIMENSIONS (L X W X H)</b>	<b>24-Port Flat Panel:</b> 102.9mm (4.04") x 482.6mm (19") x 44.2mm (1.74") <b>24-Port Angled Panel:</b> 236.0mm (9.29") x 482.6mm (19") x 44.2mm (1.74"), depth to rack face: 130.0mm (5.1")
<b>MOUNTING CAPABILITY</b>	CEA-310-E 482.6mm (19") rack
<b>CONSTRUCTION MATERIAL</b>	16 gauge cold rolled steel, Black e-coat

## Ordering Information

### Keystone Patch Panels (Cable Manager Included)

Part Number	Description
KPNLS-F1-24-01S	Keystone Shielded Patch Panel, Flat, 24-Port, 1U, Black, Empty
KPNLS-A1-24-01S	Keystone Shielded Patch Panel, Angled, 24-Port, 1U, Black, Empty
KPNLS-F1-24-01K	Keystone Shielded Patch Panel, Kit, Flat, 24-Port, 1U, Black, with Black Outlets
KPNLS-A1-24-01K	Keystone Shielded Patch Panel, Kit, Angled, 24-Port, 1U, Black, with Black Outlets

### Panel Accessories

Part Number	Description
PNLA-CVR-01	Keystone Patch Panel Cover, Angled, Black
KBL-02	Keystone Blank, White
TMK-PNL-PL24	Label designation strip for 24-port panel, blank on one side and numbered 1 to 24 on other (10 strips). Label holder for 24-port panel (10 holders)
Z-TOOL	Z-MAX Termination Tool

### Compatible Keystone Outlets

Part Number	Description
Z6A-SK(XX)	Z-MAX Category 6A Shielded Outlet

Use (XX) to specify outlet color:

01 = Black, 02 = White, 03 = Red, 04 = Gray, 05 = Yellow, 06 = Blue, 07 = Green, 09 = Orange

Add "B" to the end of the part number for bulk pack of 100 modules.

Panels include cable ties and mounting hardware. Note: 1U = 44.5mm (1.75")

Because we continuously improve our products, Siemon reserves the right to change specifications and availability without prior notice.

**North America**  
P: (1) 860 945 4200

**Mexico**  
P: (521) 556 387 7708/09/10

**Latin America**  
P: (571) 657 1950/51/52

**Europe**  
P: (44) 0 1932 571771

**China**  
P: (86) 215385 0303

**India, Middle East & Africa**  
P: (971) 4 3689743

**Asia Pacific**  
P: (61) 2 8977 7500

**Siemon Interconnect Solutions**  
P: (1) 860 945 4213  
[www.siemon.com/SIS](http://www.siemon.com/SIS)