

# SMARTair™ Wired wall readers

## Technical data – SMARTair™ wall readers

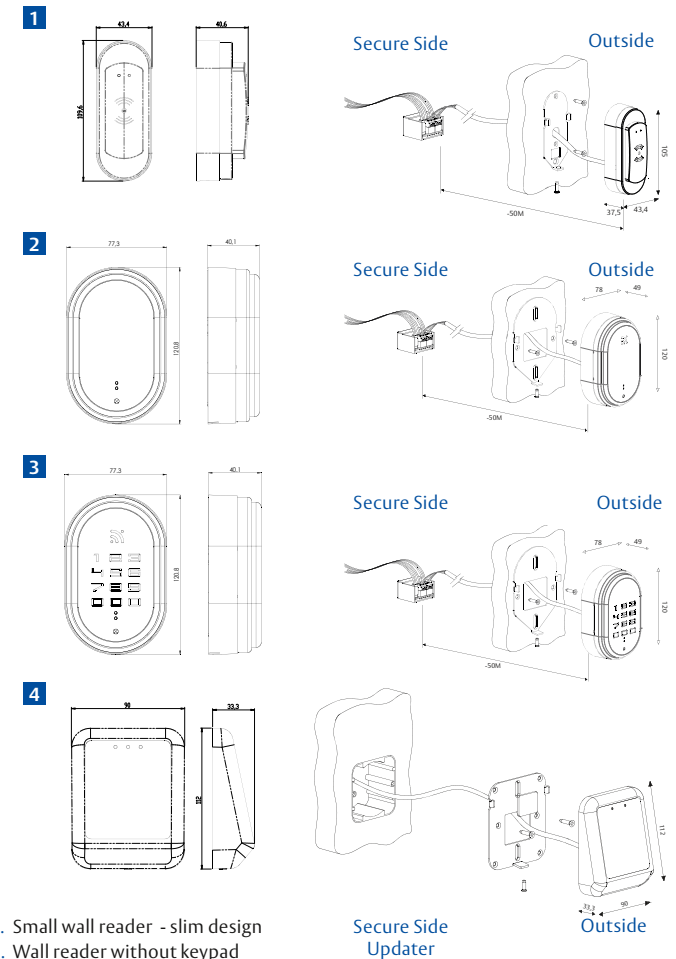
|  |  |  |
|--|--|--|
|  | <b>Application</b>                             | Doors (e.g. entrance, transit) and Gates, Elevators  |
|  | <b>Verticals</b>                               | All industries   |
|  | <b>Traffic volume</b>                          | High   |
|  | <b>Exterior usage</b>                          | Yes (IP55)<br>Up to 85% humidity without condensation,<br>Temperature (-10°C and +80°C)  |
|  | <b>Hardware compatibility and installation</b> | To be combined with electromechanical devices to unlock the door (e.g. electric strike plates, electromagnetic locks or escape routes), Cabling needed |
|  | <b>Power supply</b>                            | Cabled 12-24 VCC   |
|  | <b>System management</b>                       | Stand-Alone, Offline, Update on Card, Wireless online  |
|  | <b>Multi-authentication</b>                    | Reader and PIN   |
|  | <b>Status information</b>                      | No   |
|  | <b>Certifications</b>                          | CE   |

## SMARTair™ wall reader types



1. Standard wall reader
2. Wall reader with Keypad for multiauthentication (Different levels: PIN, PIN & CARD, only Card), PIN: 4 to 6 digits
3. Cards contact wall reader/updater before presenting to door devices to update access rights of the door (for system management "Update on Card")
4. Slim design version for narrow or aluminium profile doors

## Technical drawings and dimensions



1. Small wall reader - slim design
2. Wall reader without keypad
3. Wall reader with keypad
4. Wall updater