

PS45

75W 100-240 Vac or 13.8 Vdc Battery to 15 Vdc Standalone or Supervised Backup Power Supply



Description

The PS45 is a 75W supervised or standalone backup battery multi-purpose power supply. Mainly designed to power up to 10 video cameras or any 13.8V rated devices. With up to 27 Ah battery backup capability, the PS45 will provide a reliable robust backup power solution.

AC input between 100 Vac to 240 Vac will connect worldwide to AC main supplies.

The PS45 provides a maximum of 4.5A continuous auxiliary power output of fixed 15 Vdc operating on AC or battery. The PS45 includes ultra-fast adaptive battery charge of 500 mA to up to 1500 mA when Aux output is not utilized to its maximum.

In box space for 7 Ah battery and up to a 20 Ah additional battery may be added in external box providing 27 Ah battery backup. Second battery and external box tamper connectors are on board.

When connected to Paradox control panel bus, it will monitor and provide feedback for Aux output voltage and current, battery voltage and tamper status As well as Battery low disconnect warning.

Troubles can be viewed on a keypad, BabyWare, reported or sent via push notifications to Insite GOLD application.

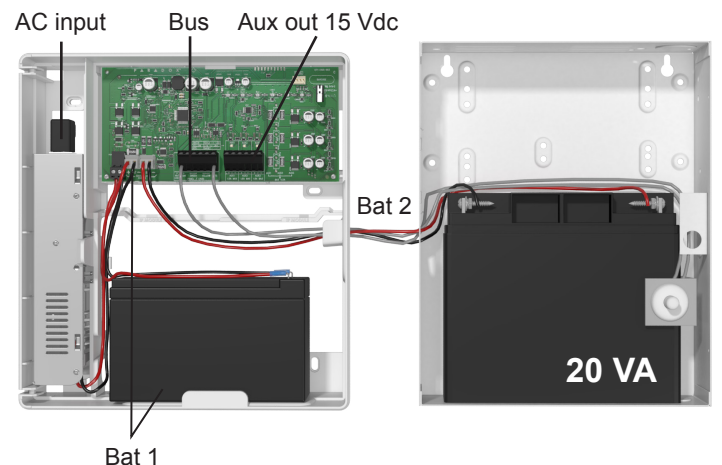
Power supply display for AC, Battery, and Aux consumption included.

Features

- AC input: 110 Vac to 240 Vac
- 75W total power
- 15 Vdc 4.0A continuous auxiliary output
- Standalone operation or Bus supervised with Paradox Security Systems
- On-board anti-tamper switch
- Application monitored notifications (when connected to Bus)

Specifications

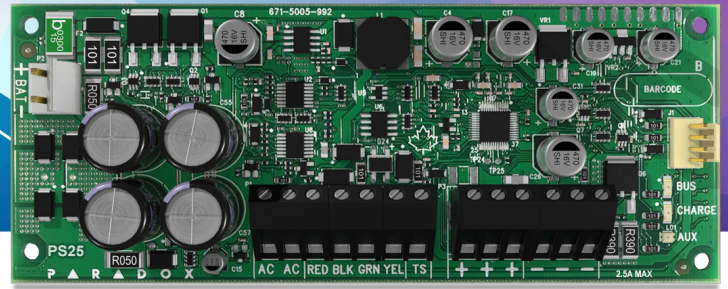
AC Power	100 Vac to 240 Vac, 50-60 Hz
Auxiliary Voltage Output	15 Vdc +/- 5% AC or Battery Backup
Auxiliary Current Output	4.0A maximum continuous current, cut off at 4.5A
Battery	7 Ah in box mounted, 2 nd battery up to 20 Ah in external box, total 27 Ah
Indications	Ac, Battery, Bus, Output: 1A, 2.5A, 4.0A
Charging	500 mA to 1500 mA, adaptive
Operating Temperature	-20 to 50° C (-4 to 122° F)
Humidity	95% maximum
Bus Supervision	AC, Battery, Aux Voltage Status and Consumption, Tamper
Dimensions (H x W x D)	25.4 x 27.3 x 8.9 cm (10 x 10.75 x 3.5 in.)
Compatibility	EVO192, EVOHD all versions, MG5000, MG5050, SP5500, SP6000, SP7000 V6.80 and higher



PS45 dual box installation

PS25

2.8A Supervised Power Supply



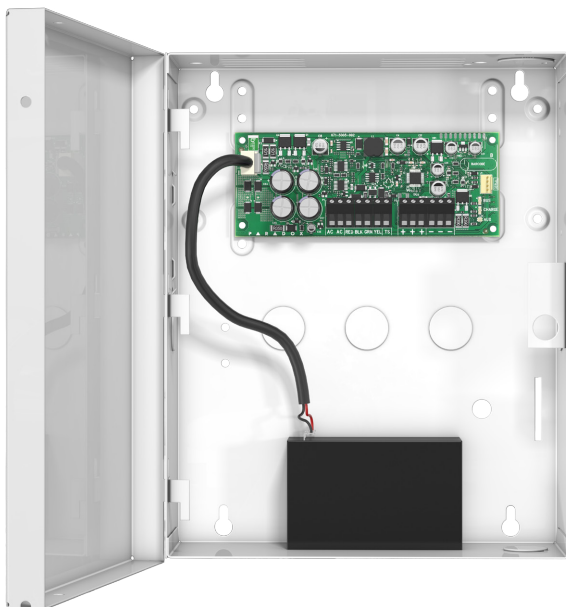
Description

The PS25 is a 2.8A supervised switching power supply that connects to Paradox control panel bus or may work as a standalone power supply.

The PS25 provides a maximum of 2.5A (13.8 Vdc) continuous auxiliary power output and charge a battery with 300 mA, battery charging current may increase up to 1.2A if Auxiliary current is reduced accordingly.

When connected to a Paradox panel bus, it will provide feedback on AC supply, output voltage, current and warning before disconnect auxiliary output when battery is drained. Troubles can be viewed on BabyWare, reported or sent via push notification. The PS25 will provide AUX power regardless of the panel connection.

It is easy to install via 4-wires directly to the keypad bus.



Features

- 2.8A supervised power supply
- 2.5A auxiliary power output and up to 1.2A flexible battery
- On-board, auto-sensing anti-tamper switch
- Standalone operation

Specifications

AC Power	16 Vac, 40 VA, 50-60 Hz
Auxiliary Power	2.5A maximum 13.8 Vdc when AC present 12.8 Vdc or battery 1V when battery supply Disconnect at 9.5V
Battery	12 Vdc, 4 Ah to 14 Ah
Charging	300 mA min to 1200 mA (redirect from auxiliary if less than 2.5A)
Operating Temperature	-20 to 50° C (-4 to 122° F)
Humidity	95% maximum
Bus Supervision	AC, Aux voltage
Dimensions (H x W x D)	5.6 x 14 x 2.5 cm (2.2 x 5.5 x 0.9 in.)
Certification	CE
Compatibility	EVO192, EVOHD all versions, MG5000, MG5050, SP5500, SP6000, SP7000 V6.80 and higher

