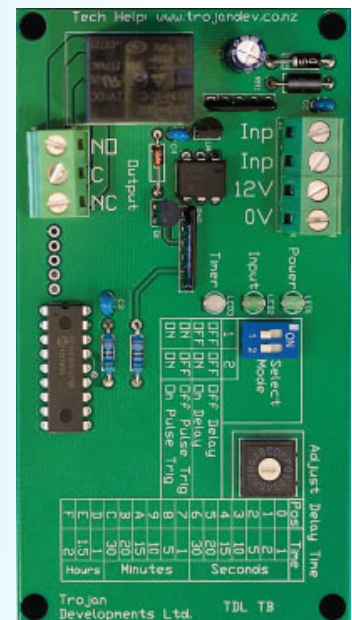


## Timer Board

The TDL-TB is a multifunction timer board. It has a field selectable definitive time duration to operate from 0.5 seconds up to 2 Hours. It is extremely versatile with 4 input modes (Off Delay, On Delay, Off Pulse & On Pulse) allowing endless application possibilities. The board is designed to fit the TDL Mounting Base, which makes installation very easy and tidy with all cables run behind the PCB with a cover that has an area for labeling. The TDL-TB can be connected together with other boards to make up a complete system of relays, fuses, timers etc...

## Features:

- ▼ Off Delay (loss of 0Vdc on the input gives an OFF delay on the output)
- ▼ On Delay (gain of 0Vdc on the input gives ON delay on the output)
- ▼ Off Pulse Trigger (the 0Vdc input is lost for a moment which gives an OFF delay on the output)
- ▼ On Pulse Trigger (the 0Vdc input is lost for a moment which gives an ON delay on the output)-MB mounting system
- ▼ Time duration is easily set via the rotary dip switch, as listed on the board
- ▼ Raising clamp type terminals will not damage cables and can accommodate up to a 2.5mm<sup>2</sup> cable
- ▼ Set time will not drift as the components age or the temperature fluctuates
- ▼ On board LEDs indicate that the board has power, that the input has been operated, that the timer is counting down and that the output is triggered
- ▼ Fits TDL-MB mounting system which is included



## Specifications:

- ▼ 0.5 Second to 2 Hour selectable
- ▼ Operating Voltage 9 to 16Vdc - 17mA at 13.6 Vdc standby and 57mA energised
- ▼ Input terminals for a switched contact or a negative trigger
- ▼ Single Pole Double Throw relay output
- ▼ Contacts rated at 8 Amps AC/DC
- ▼ Dimensions: 110mm (w) x 60mm (h) x 23mm (d)

## Order Options:

- ▼ TDL-TB