

# TDL-1RB

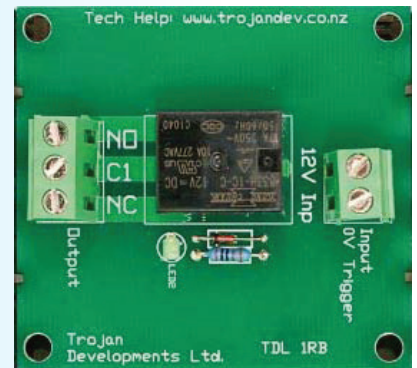
TROJAN DEVELOPMENTS

## Single Relay Board SPST

The TDL-1RB is an 8 Amp Relay Board. It has 1 x 12Vdc input that switches a single pole double throw relay. The board is designed to fit the TDL Mounting Base, which makes installation very easy and tidy with all cables run behind the PCB with a cover that has an area for labeling. The TDL-1RB can be connected together with other boards to make up a complete system of relays, fuses, timers etc...

## Features:

- ▼ Contact rated at 8 Amps AC/DC
- ▼ Fits TDL-MB mounting system
- ▼ Modular unit that can be used to switch a number of devices
- ▼ Designed to be used as an interface between a low current switching control board and a high powered lock
- ▼ LED to indicate relay status
- ▼ Raising clamp type terminals will not damage cables and can accommodate up to a 2.5mm<sup>2</sup> cable



## Specifications:

- ▼ Single way Relay Board
- ▼ Operating Voltage 9 to 16Vdc - 38mA at 13.6 Vdc
- ▼ 12Vdc negative trigger input
- ▼ Single Pole Double Throw relay
- ▼ Contacts rated at 8 Amps AC/DC
- ▼ Dimensions: 55mm (w) x 60mm (h) x 23mm (d)

## Order Options:

- ▼ TDL-1RB

+64-9-525-7035 ▼ [www.trojandev.co.nz](http://www.trojandev.co.nz) ▼ [sales@trojandev.co.nz](mailto:sales@trojandev.co.nz)

*developing innovative access control solutions since 1987*

