

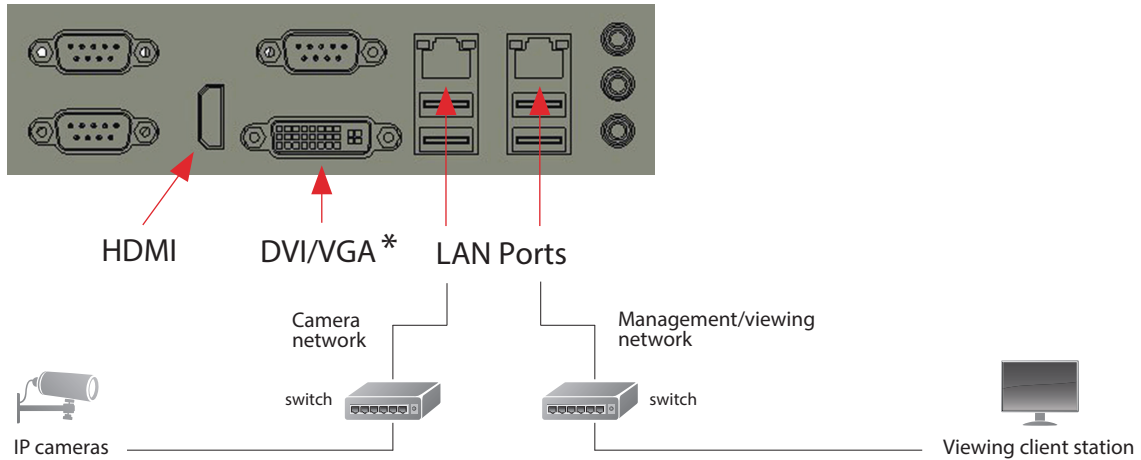


# MILESTONE HUSKY™ M30 & M50 QUICK START GUIDE

## Configuration Steps

Follow the steps outlined below to set up your network and ensure your cameras are added to the system.

1. To configure cameras, please follow the configuration instructions provided by the manufacturer of your specific camera.
2. For optimal performance connect the camera network to one of the LAN ports and the viewing network to the other LAN port. See diagrams below:



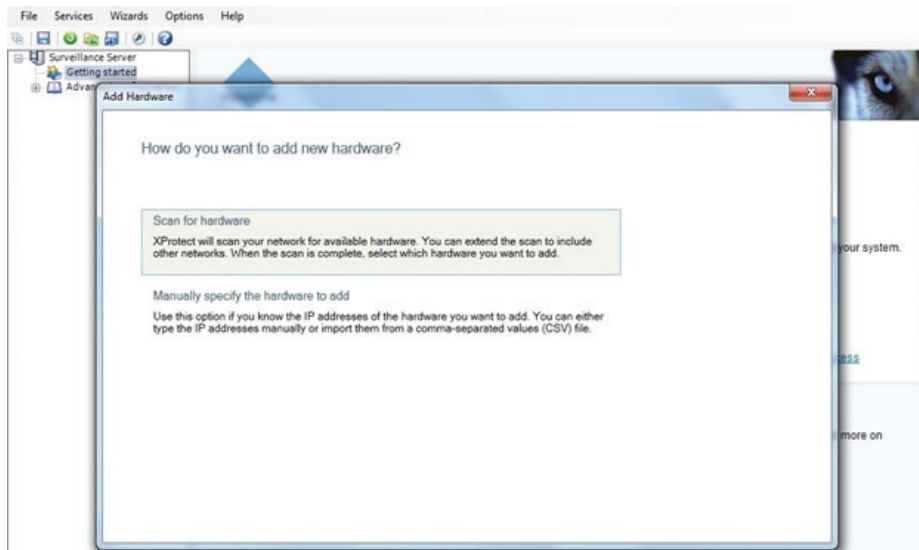
\*To use the VGA port, you must attach the provided adapter.

3. Configure your LAN ports to use the same addressing scheme (DHCP or static addressing) as your camera network and viewing network.
4. Launch the Milestone **Husky Management Application** from the desktop to begin adding and configuring your cameras.
5. For additional information, please see the documentation under the Management Application Help menu.

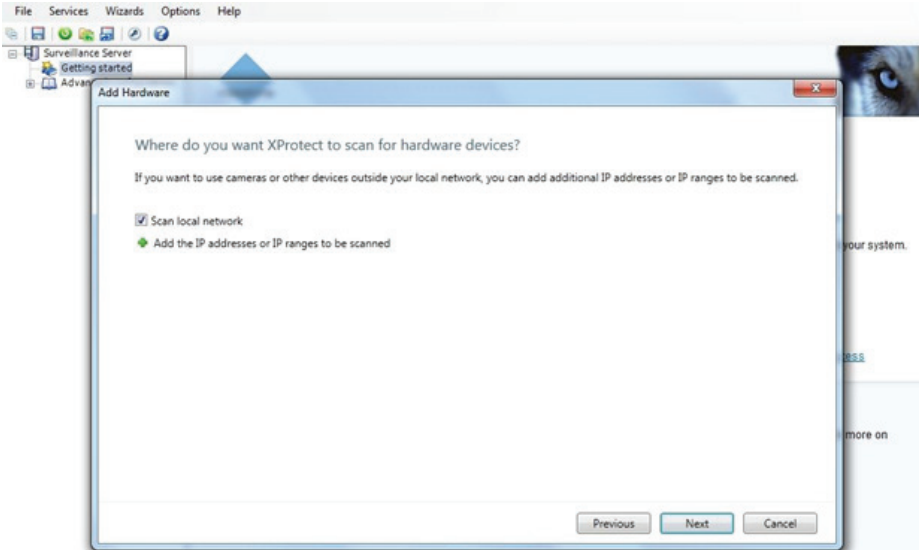
a. Click on **Add Hardware**

The screenshot shows the Milestone Husky Management Application interface. The 'Help' menu item is circled in yellow, and an orange arrow points to it from the text 'Click on Add Hardware'. The 'Add Hardware' button in the Hardware section is also circled in yellow.

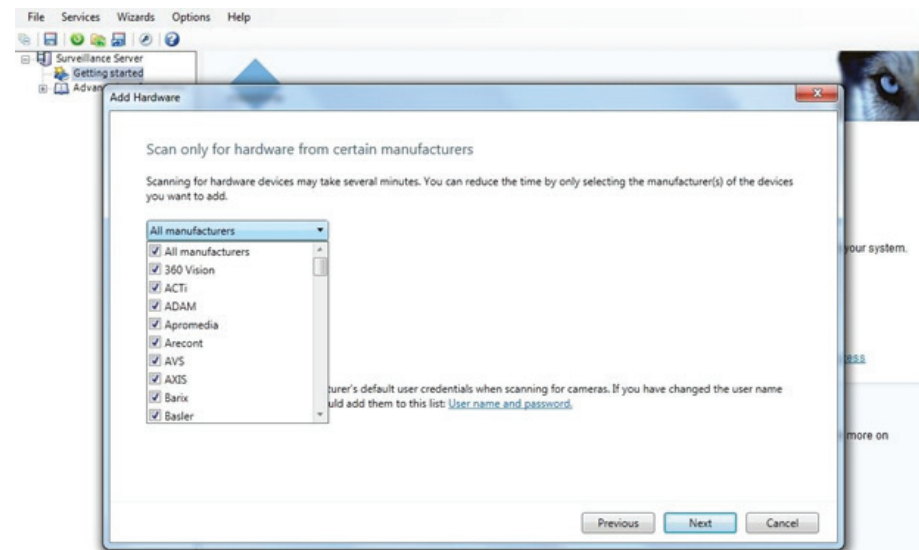
b. Click on **Scan for hardware**



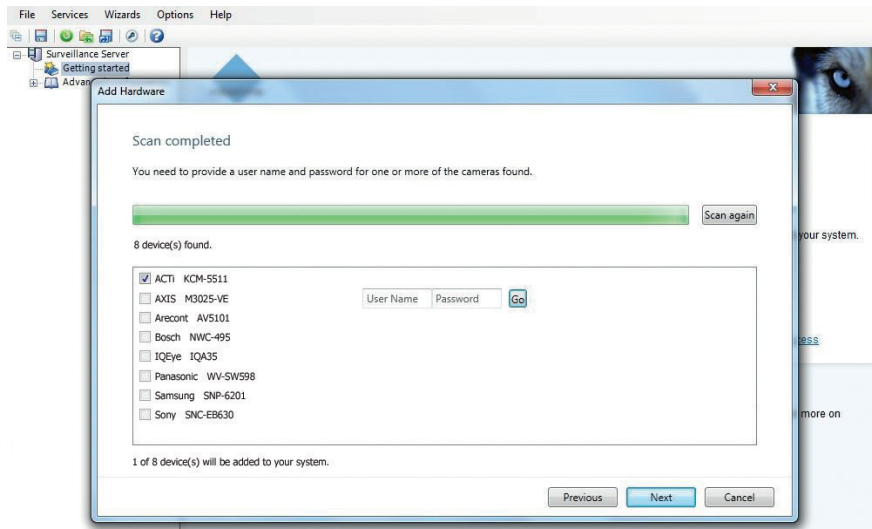
c. Click **Next**



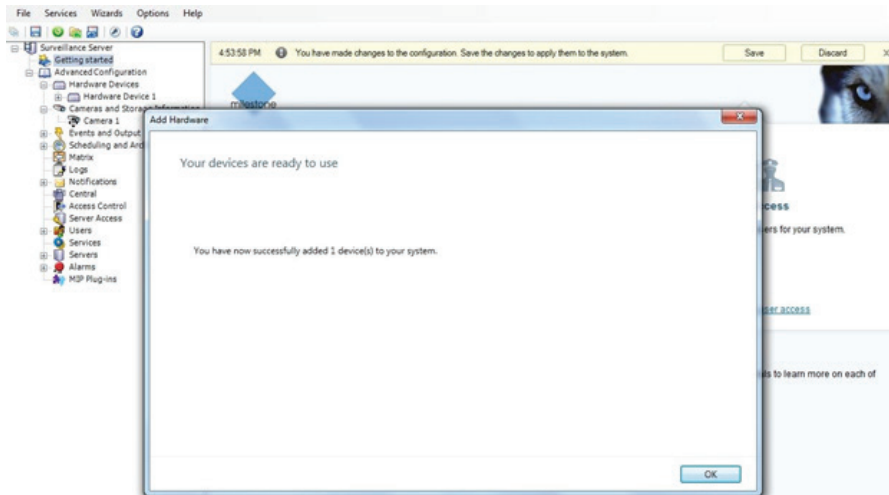
d. Select **All Manufacturers** or select the camera manufacturers you have to speed the discovery process.



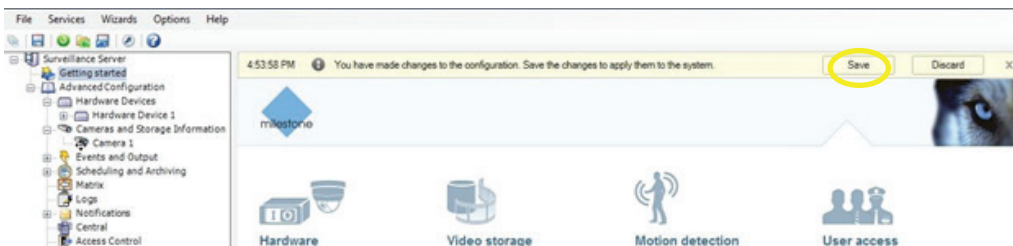
- e. After scanning, select the devices you want to add, making sure that the correct username and password is entered where appropriate, then click **Next**.



- f. When complete, click **OK**.



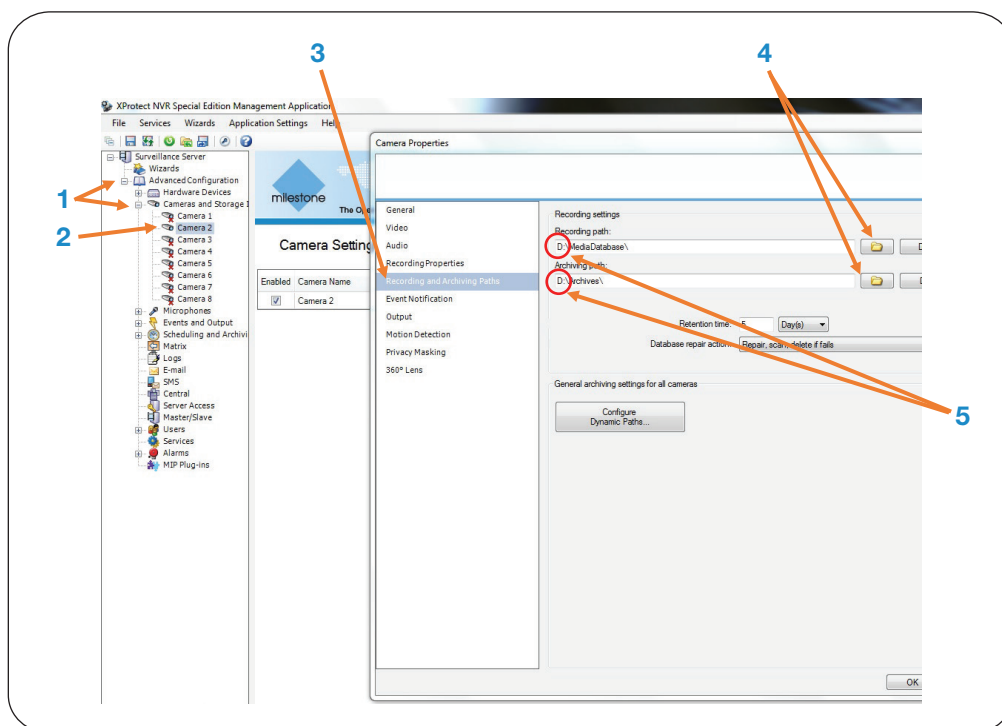
- g. Save your configuration.



For the best performance of your system, you must distribute recordings from your cameras evenly among the available hard drives. You must place the live and archive databases for a camera on the same hard disk drive. To set each camera's recording and archiving path, start the Management Application then:

1. Click the '+' sign next to **Advanced Configuration** then **Camera and Storage Information** to see all the cameras.
2. Right-click the camera you want to configure and select **Properties**
3. Click on **Recording and Archiving Paths**
4. Set the Recording and Archiving Path under **Recording Settings**
5. Set each camera's recording and archiving path to the **same drive letter**.
6. Repeat steps 1-5 for all cameras and distribute them evenly across all available drives labeled **data**
  - For example, if you have 40 cameras and 8 drives, put 5 cameras on each drive.
  - Set cameras 1-5 to drive D:\data, then the next 5 to E:\data and so on

**NOTE:** Do not assign any camera to record/archive to **drive C** which is reserved for the Operating System and the VMS.



Milestone Systems HQ, Denmark  
Tel: +1 503 350 1100

Milestone Systems US  
Tel: +1 503 350 1100

Milestone Systems Canada  
Tel: +1 503 350 1132

Support inquiries:  
support@milestone.us

General inquiries:  
info@milestonesys.com

Sales inquiries:  
sales@milestonesys.com

Milestone Husky is only available in the US and Canada  
Milestone Husky is a registered trademark of Milestone Systems  
© 2013 Milestone Systems. All rights reserved.



The open platform company

### About Milestone Systems

Founded in 1998, Milestone Systems is a global industry leader in open platform IP video management software (VMS) and produces XProtect VMS, the Milestone Arcus™ platform and the Milestone Husky™ series of network video recorders. Milestone delivers powerful surveillance that is easy to manage, reliable and proven in surveillance installations around the world. With support for the widest choice in network hardware and integration with other systems, Milestone offers best-in-class solutions to video enable organizations – managing risks, protecting people and assets, optimizing processes and minimizing costs. Milestone products are sold through authorized and certified partners. For more information, visit: [www.milestonesys.com](http://www.milestonesys.com)