

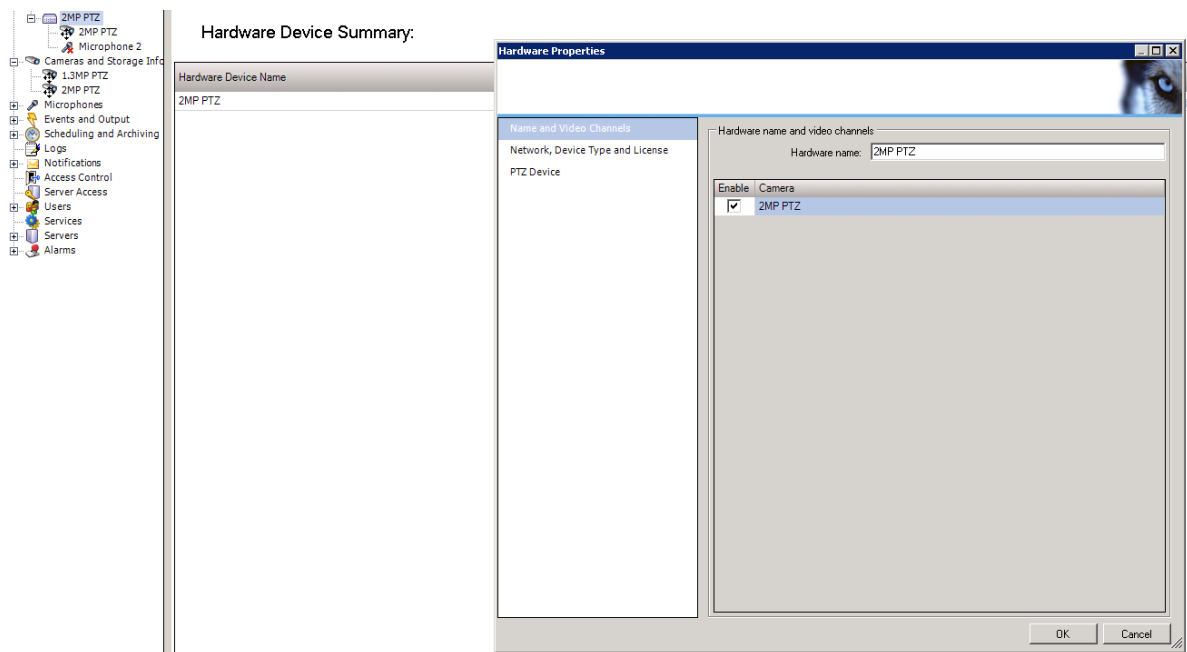


Milestone custom settings with Hikvision PTZ

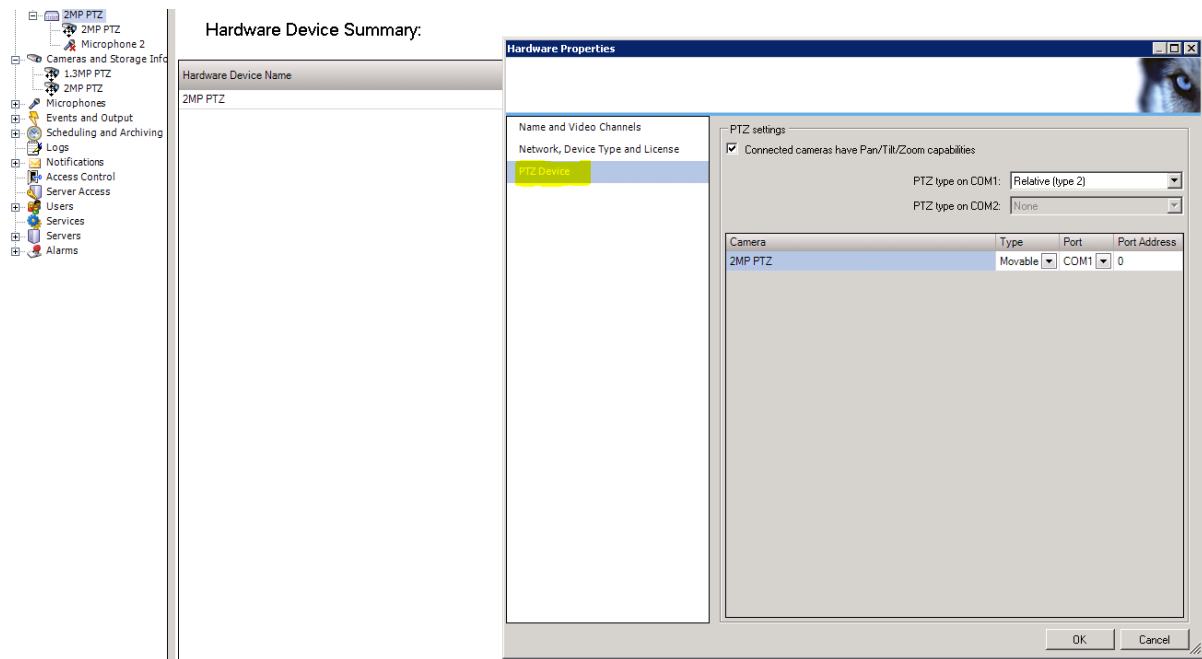
Required for:

- XProtect Go
- XProtect Essentials
- XProtect Express
- XProtect Professional
- XProtect Enterprise

1. Right click on the Hardware Device and go to “Properties”



2. Click on PTZ Device



3. Ensure that the following Highlighted items are correct and click OK.

