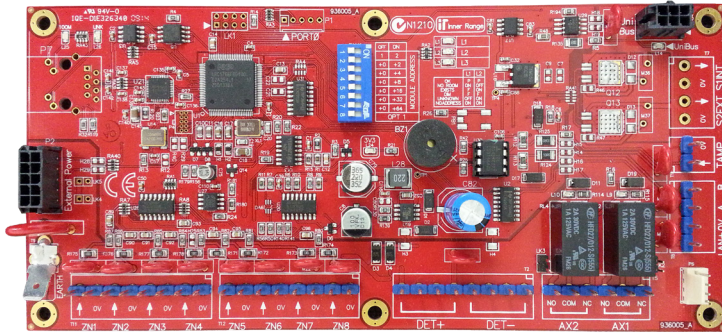


Integriti 8 Zone LAN Expander

Connects directly to the Integriti RS-485 LAN

The Integriti 8 Zone LAN Expander Module connects directly to the Integriti RS-485 LAN and provides an additional 8 Zone inputs, 2 Auxiliary outputs and 2 Siren drivers*.

Up to 99 Zone Expander Modules can be connected to the Integriti RS-485 LAN or via IP LAN if connected with CLOE modules (Code# 20500).**



The 8 Zone LAN Expander Module also offers a UniBus in-cabinet expansion interface allowing further expansion of Zone inputs and Auxiliary outputs using plug on UniBus expansion devices fitted within the same tamper protected enclosure. Up to 32 Zone Inputs or 32 Auxiliary Outputs can be connected to the Module (32 Zones and 26 Auxiliaries or 24 Zones and 32 Auxiliaries at the same time).

The power supply requirement is 11 to 14VDC and a range of Integriti plug on external 2Amp, 3Amp or 8Amp switchmode power supplies are available. Integriti external power supplies are fully monitored via the 8 Zone Expander Module.

Key Features

- RS-485 LAN connectivity
- UniBus In-Cabinet Expansion Interface
- 8 Zone Inputs - Multistate or Analogue
- 2 Auxiliary Output Relays
- External Integriti power supply connection
- Three options for power supply size 2Amp, 3Amp & 8Amp
- Six enclosure size options
- Dedicated Tamper Input
- Internal & External variable tone Siren Outputs*
- 4 Terminals supplying 13.75VDC nominal Detector Power
- Over-The-Wire firmware upgradable
- On board diagnostic LED's to assist with commissioning and troubleshooting
- Small PCB size 200 x 95mm

Expansion Capabilities

- Zone Inputs - Expandable to 32 via UniBus
- Auxiliary Outputs (Relays) - Expandable to 32 via UniBus

* Siren drivers fitted from PCB revision "B"

** The total amount of zone inputs available in the system is dependent on the SMART card level fitted to the controller (See the Integriti ISC Controller data sheet for details).

** Where it is necessary to connect large numbers of Zone Expanders to the Integriti RS-485 LAN, the use of LAN Isolators, or other LAN retransmission devices such as Fibre Modems or CLOE modules is recommended.

Uni-Bus In-Cabinet Expansion



UniBus is an innovative in-cabinet bus which allows the connection of Expansion devices, Communications devices and Door & Reader expansion devices on a common Plug & Play bus.

UniBus is built on the highly reliable CANBus technology and replaces the need for ribbon cables and specialised connectors. Up to six UniBus devices can be daisy chained to a UniBus host module.

Uni-Bus Compatibility

		Host Modules			
		ISC	IAC	8 Zone Exp	ILAM
UniBus Modules	8 Zone Exp	2	0	3	0
	8 Relay Exp	4	4	4	2
	16 Floor Lift	6	6	6	6
	2 Door Exp	0	3	0	3
	2 Way UART	4	4	0	0

Specifications

Physical	
PCB Size Code:	Integriti "B" size
PCB Dimensions:	200(L) x 94(W) x 45(D) (mm)
Weight:	300g (For PCB & accessories Only)
Installation Environment:	0°C - 40°C @15% - 85% Relative humidity (non-condensing)
Electrical (For PCB Only)	
Power Supply Input:	11V to 14VDC
Current Consumption:	60mA standby. 100mA with both Aux relays on
NOTE: Current consumption does not include the current required by detectors or other external devices such as buzzers, lamps or any device attached to the DET+, LAN+ and UniBus connections	
Contact Ratings	
Aux Relays:	2 Amps @ 30VDC
Connections	
Zone Inputs:	8 x Multistate Zone Inputs
Aux Outputs:	2 x Relay Output NO COM NC
Cabinet Tamper:	2 pin connection for cabinet tamper switch
UniBus Port:	1 x UniBus Host expansion port
RS-485 LAN:	1, Includes LAN+, LAN-, A, B. (LAN addressing set via DIP switches)
Siren Outputs:	1 x Internal & 1 x External variable tone Siren Outputs*
Power Supply:	1 x Integriti External Power Supply Connection
Power Outputs:	4 x 13.75Vdc nominal outputs (DET+/DET- Detector Power)
External Power Supply Monitoring (Compatible with IR SMART PSU Devices)	
AC Fail:	External PS AC Fail
Low Battery:	External PS Low Battery
LAN Fuse:	External PS LAN Fuse
Detector Fuse:	External PS Detector Fuse
Low Volts:	External PS Low Volts
PSU Fail:	External PS Fail
Low Volts:	External PS Low Volts
PSU Fail:	External PS Fail
Compliance	
Electrical	
Environmental	RoHS 

Enclosure Options

Code#	Description
21121	Integriti - 8 Zone LAN Expander - Standard Cabinet - 2 Amp PSU
21124	Integriti - 8 Zone LAN Expander - Standard Cabinet - 3 Amp Smart PSU
21122	Integriti - 8 Zone LAN Expander - Large Cabinet - 2 Amp PSU
21125	Integriti - 8 Zone LAN Expander - Large Cabinet - 3 Amp Smart PSU
21128	Integriti - 8 Zone LAN Expander - Large Cabinet - 8 Amp Smart PSU
21123	Integriti - 8 Zone LAN Expander - Mega Cabinet - 2 Amp PSU
21126	Integriti - 8 Zone LAN Expander - Mega Cabinet - 3 Amp Smart PSU
21127	Integriti - 8 Zone LAN Expander - Mega Cabinet - 8 Amp Smart PSU