

## Insight Professional

### Management Software for Concept 4000 Systems

Insight Professional is a “best in class” system management software solution providing customers with user friendly control and management of multiple Concept 4000 hardware platforms.

### User Friendly Programming and Control

Operators can edit programming of items such as users, doors and lifts within multiple Concept 4000 panels.

Programming features include:

- User friendly programming screens
- Control of doors, areas, lifts and auxiliary outputs etc.
- Powerful search and cross-referencing tools
- Hyperlinks to move between related programming screens

### Robust Architecture

Insight is built on a robust technology platform including:

- Multi-panel, multi-workstation (multi-client)
- MS SQL server database - ODBC compatible
- Rijndael AES 128-bit encryption
- Proprietary Insight communications protocol developed specifically for IP based communications

### Seamless Multi-Site Management

Sites can be managed individually or an almost unlimited number of Concept 4000 sites can be managed as one seamless system with the intuitive Insight software suite. Global user management means that users can be added and deleted from the system, their security levels changed, and their access to doors and security areas modified with these changes being immediately updated to sites around the globe.



#### Supported Platforms:

Microsoft Windows 2000  
 Microsoft Windows 2000 Server  
 Microsoft Windows XP Pro  
 Microsoft Windows 2003 Server  
 Microsoft Windows Vista (Business or Ultimate)

#### Minimum Hardware Requirements:

Intel® Pentium® 4 2GHz  
 512Mb RAM (1GB with Windows Vista)  
 CD-ROM  
 500Mb free hard disk space\*  
 XVGA monitor at 1024 x 768, 24 bit colour  
 Mouse or similar device

#### Recommended Hardware:

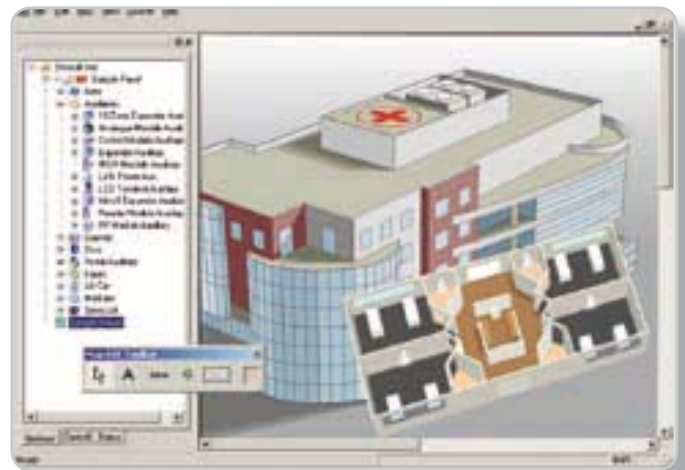
Intel® Core 2 Duo (or quad core) processor @ 2.4GHz  
 3Gb RAM  
 Gigabit Ethernet adaptor  
 DVD reader / writer  
 5Gb free hard disk space\*  
 22" WSXGA+ (1680x1050) monitor, 24 bit colour  
 \* Insight database maximum 4Gb. Larger sizes are possible if database hosted on SQL Server.

### Rich Floorplan View

Insight's Schematic module provides the facility to monitor the status of field hardware and site security on an interactive, multi-layered, graphical representation.

Some of the highlights of the Schematic module are:

- Import maps in a variety of formats
- Create drill-downs and navigational hyperlinks
- Automatically display a schematic in response to a programmed event
- Mimic control panel functionality
- Drag and drop items on to maps
- View the real-time status of inputs, areas, doors and auxiliaries
- Customisable icon library



### Comprehensive Reporting

A range of customisable reports are available in Insight, giving the user great flexibility to generate reports for all requirements. Reports are easily exported to other applications.

Some examples of popular reports are:

- User access through a door
- Alarms in an area
- User arming/disarming of an area

Further flexibility is afforded by the Advanced Reporting Module, which adds:

- Muster report
- Time on site report
- Door access reports
- Extended user report
- Report designer tool allowing total control over report output

## Flexible Review, Alarm and Event Management

Insight automatically maintains a merged log of alarm and system events generated by all Concept 4000 modules on the network. Operator actions within Insight are also logged.

Certain Review events can be forwarded as pager, SMS, email or Internet messages

The review module also includes:

- Unlimited customisable review filters
- Unlimited concurrent review windows
- Comprehensive event triggering
- Customisable alarm events and alarm procedures (including font and colour control)
- Operator response processing including systemwide acknowledgement

The Insight Communicator Module automatically processes selected types of Review events and sends email, pager and SMS messages.

## Granular Operator Permissions

Insight gives the system administrator unprecedented control over an operators' system permissions.

- Assignment of permissions via operator types
- Assign more than one operator type to each operator
- Flexible permissions: (view, inspect, change, create, delete, control, print, export and set)

### Ordering options

994402 Insight Professional

## Insight Professional Components

### Insight Professional

Core package providing site management, panel programming, event review, floor plan functionality, basic reporting, operator and user administration.

### Optional Modules

- DVR Integration Module
- Advanced Reporting Module
- Photo-ID Module: Adds card design/print support
- COM Interface
- Dynamic User Import Module (formerly PMS Interface)
- Card Pool
- Insight Communicator



*An unlimited number of Concept 4000 sites can be managed as one seamless system with the intuitive Insight software.*

## Installer's Software Tools

### Insight Lite

Insight Lite provides an intuitive yet powerful upload-download and programming interface, allowing technicians to easily maintain hundreds of Concept hardware installations.

Insight Lite is provided free of charge to Inner Range Certified Technicians for the purposes of assisting in the programming of Concept 4000 systems. It allows full database editing but does not include the on-site system management utilities and modules that are included as part of the Insight Professional version. The availability of Insight Lite as a utility for technicians means that they now need only learn one software application instead of many.

### WDirect

To assist technicians in the maintenance of legacy hardware that is not compatible with Insight, such as Type 1 Concept hardware and pre V5 Type 2 Concept hardware, WDirect is available.

## Insight Enrolment Station

The Insight Card Enrolment Station is designed to conveniently allow Cards to be remotely enrolled in an Inner Range Concept 4000 system at a PC using the Insight software. Administration of large amounts of card users with Concept 4000 systems is greatly simplified with this addition to the product range.

This new product is especially useful in systems that use special card readers which manipulate data from cards before passing the modified data to the system underneath. The Card Enrolment Station can be fitted with the same special card reader as used in the Concept 4000 system – This enables consistency of card data and allows hassle-free administration of systems with special card readers.

The Enrolment Station is connected to the PC through the serial port or serial to USB converter.

All of the Wiegand formats available in the Concept 4000 hardware platform are supported utilising either Direct Entry or Site Code mode.

Model options include a version fitted with the IR Dual-format Prox Reader, which is compatible with Wiegand format cards (such as HID Proxpoint) as well as IR-Secure 40 and a version with no reader fitted. The latter is useful in systems not using IR or HID proximity cards and allows the Installer to connect a reader to match those used in the hardware installation.

### SPECIFICATIONS

#### Electrical

|                     |   |
|---------------------|---|
| Input Voltage       | 11-14VDC                                      |
| Operational Current | 42mA (PCB only)                               |
|                     | 95mA (with IR Dual-format Prox Reader fitted) |
| Fuse Protection     | 500mA reader power fuse                       |

#### Outputs

|              |                          |
|--------------|--------------------------|
| Serial Ports | Serial RS232 to PC (DB9) |
|--------------|--------------------------|

### Ordering Options

#### 994500BlankAU

Insight Card Enrolment Station  
– No reader fitted

#### 994500WiegAU

Insight Card Enrolment Station  
– IR Dual-format Prox Reader fitted



## Insight Card Pool Module

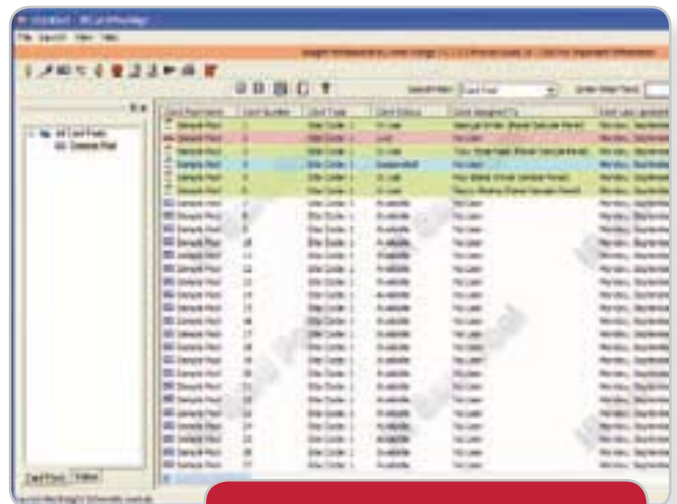
This module streamlines the administration of access control cards across an organisation. Operators can create pools of cards and assign them to users, return cards to a pool (for example, when a visitor signs out, or a contractor finishes their tenure) as well as, where necessary, marking cards as suspended or lost.

When creating/editing users within Insight Edit (and Card Pool is installed), operators can now assign the next available card from created card pools by means of a couple of button presses.

This module makes it easy to migrate to the Card Pool model from systems with cards already programmed in them.

### Ordering Options

994412 Insight Card Pool Module



**The Card Pool Module and the Insight Enrolment Station are perfect partners for hassle-free card management!**

## Advanced Reporting Module

The Advanced Reporting Module greatly enhances the reporting capabilities from within Insight and contains:

- The Time on Site Report
- The Muster Report
- Door Access Reports
- A Report Designer Tool

The **Time on Site Report** calculates, per employee, the amount of time spent “on-site” and then presents this information in an easy to read report. Alternatively, this information can be exported to a payroll package.

- Fully customisable report criteria including flexible start and end times, multiple shift times, cardholders and doors
- Selectable reporting fields
- Choice of detailed or exception reporting modes
- Customisable shift tolerance
- Provision for worker breaks of customisable duration
- Option to export to CSV (Comma Separated Values) and third party payroll packages (MYOB etc).

The **Muster Report** allows one to designate an area in the system as a muster point, then gives the last time that each user accessed that area.

**Door Access Reports** show when doors in the system have been accessed and by whom.

## PhotoID Module

Insight PhotoID enables the design and printing of user photo-identification cards. The card designer environment is simple to use and enables the inclusion of background images as well as employee information directly from the Insight database.

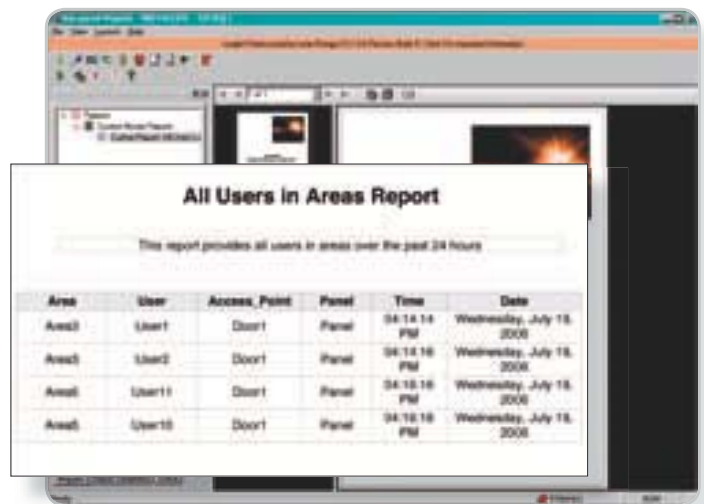
- Operators can design custom card templates. Each template may contain:
  - a background image
  - user photograph
  - selected database fields
  - simple text
- Includes image capture from Windows Image Acquisition (WIA) compatible devices (i.e. digital cameras, web cams etc.)
- Can be used from multiple Insight client workstations with only a single PhotoID license, making it an extremely cost effective card printing solution
- Once the card templates are configured, individual user cards may also be printed directly from the user programming screen, without opening the Insight PhotoID module
- Print cards individually or in batches

The **Report Designer Tool** allows total control over report output, giving the operator complete flexibility to generate reports for all requirements.

The **Extended User Report** shows the name, company, department and photograph of the specified set of users. Custom Data Fields can be added by basing a new report on this template

### Ordering Options

994405 Insight Advanced Reporting Licence



### Ordering Options

994406 Insight PhotoID Licence

## DVR Integration Module

Insight DVR Integration allows operators to control Digital Video Recorders and cameras within Insight, including the ability to view live and historical video feeds.

- Attach DVRs and cameras to Insight
- View live and historical video feeds directly in the Insight workspace
- Remotely control PTZ (Pan/Tilt/Zoom) cameras
- Access recorded video information based on review events
- Switch cameras and video feeds based on custom real-time triggers
- Send model-specific commands to a DVR or camera
- Place cameras and camera presets directly onto floor plans in Insight Schematic
- Support for multiple DVR vendors within a single Insight system
- Create a custom matrix with cameras connected to DVRs from multiple vendors.
- Control DVRs from multiple vendors with the one graphical user interface.
- Link cameras to almost any object in the Insight database (doors, inputs, users etc).



### Ordering Options

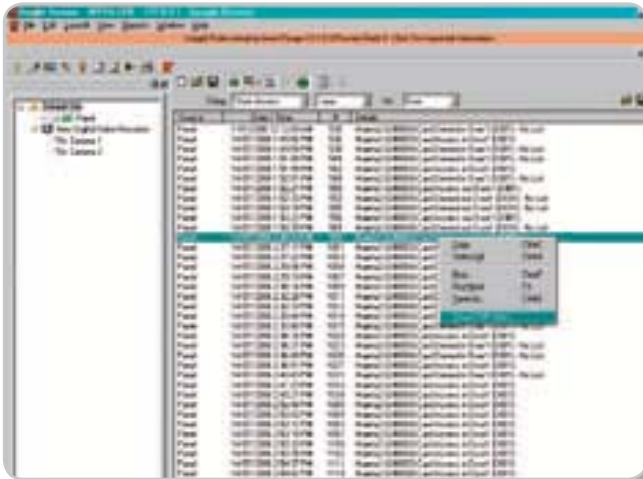
#### 994410

Insight DVR Integration Module (allows connection of up to 30 cameras)

#### 994411

Insight Extra DVR Licence (allows connection of an additional 10 cameras for each additional licence with no limit on total number of cameras)

Many popular DVR brands such as Dallmeier, Pacom and Dedicated Micros are currently supported with more being added continually.



## Insight Communicator

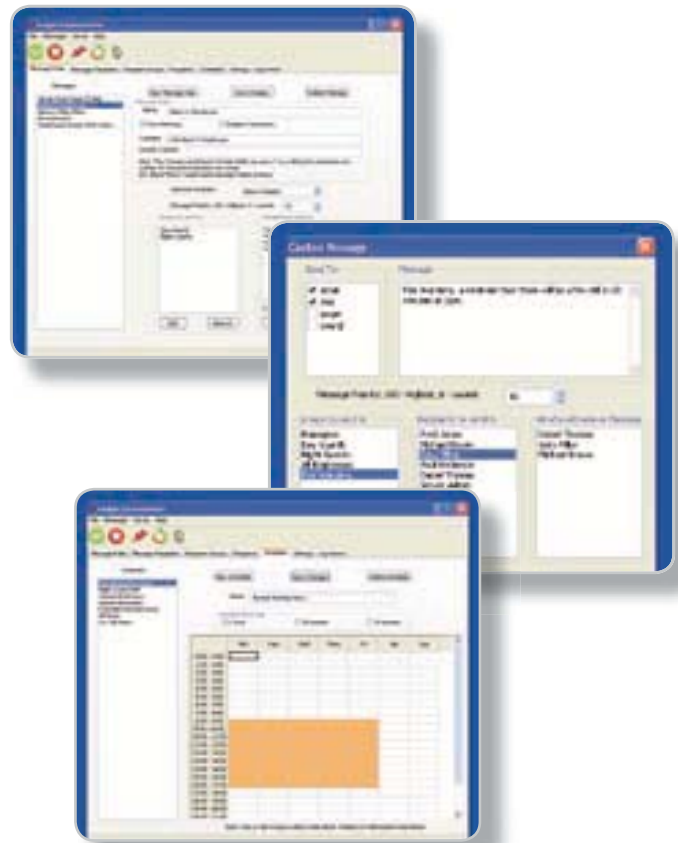
With this handy option, individuals and groups can receive pager, SMS and email messages that are automatically sent in response to Insight Review events.

Insight Communicator is highly configurable: Messages can be prioritised, applied to a particular template and sent based on **rules**. Simple text matching and/or regular expressions can be used. For example, Review events containing the word, "Warehouse" might only be sent to the Warehouse Manager and the Duty Guards, whereas Review events containing the word, "Fire" might be sent to All Managers and the Duty Guards and so forth.

**Templates** can determine whether a message is sent to a Pager, SMS or by email, or any combination of these media, as well as set the format and content of this message for each medium.

Details can be tailored to each **Recipient**. A Recipient can be a person or a device such as a pager or a computer. For each recipient, the operator can configure which messages are received, how they are received (SMS, Pager, email) and when they are received.

Fully customisable **Schedules** can be created and used to control when messages are received. For instance, emails for a given recipient might be set to be received at all hours, as messages occur, whereas Pager or SMS messages for the recipient might be limited to certain hours of the day. Insight Communicator can also be used to send, "one-off", **Custom Messages** where required.



### Ordering Options

994416 Insight Communicator

## Dynamic User Import Module (formerly PMS Interface Module)

This module allows automatic user programming of Concept Control Modules based on the output of other software.

The Dynamic User Import Module suits any application that requires card or PIN numbers to be created automatically under the direction of an external program. For example:

- **Hotel PMS (Property Management Systems):** adding users when a guest checks in, and expiring them when they check out. Only access to their floor and room is permitted.
- **ERP/HR/Payroll Systems:** adding users when they are added to the resources database, and removing them when employment is terminated.
- **Student Databases:** adding students when they are enrolled at an institution, and removing them when study is completed.
- **Visitor Management:** adding temporary users when they are visitors on a site, and removing them when the visit ends.

### Ordering Options

994409 Dynamic User Import Module

## COM Interface Module

The COM Interface Module enables software developers to write software that can connect to an Insight Professional Server and query the Areas, Doors, Users and User Types within each Concept Control Module. It also provides an interface for receiving live or archival review from Insight Server.

Example applications:

- Web tools could respond to security and alarm messages from Insight
- Logistics software could count users entering and leaving an area in real time
- Messaging software could respond to security events in the field in real time
- Tracking software could tag the location of personnel on a site map

### Ordering Options

994408 Insight COM Interface Module (Read Only)

994417 Insight COM Interface Module (Write & Control)