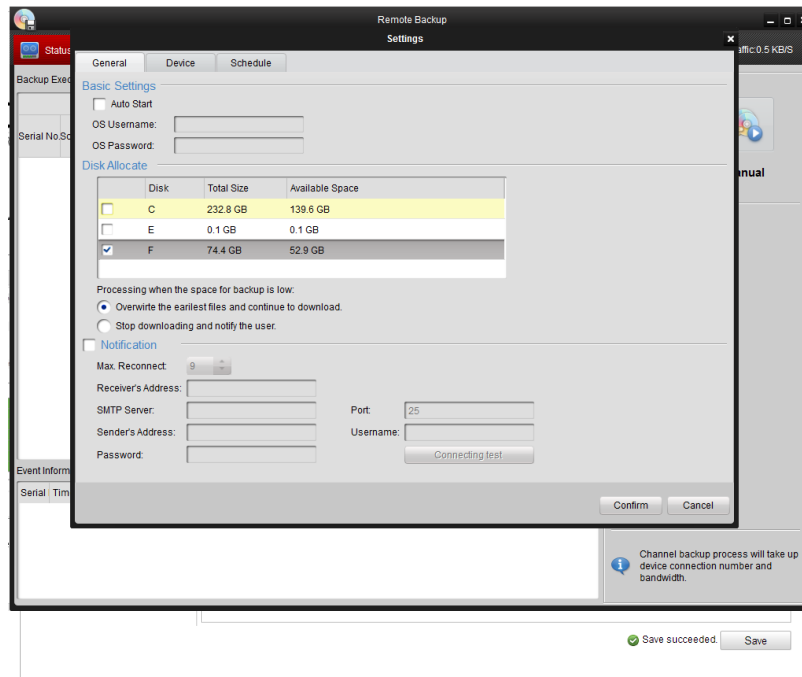
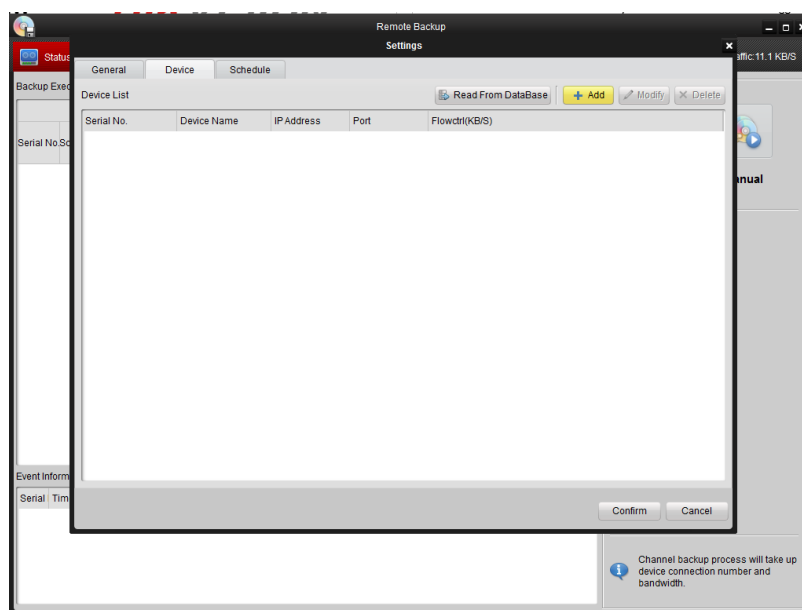




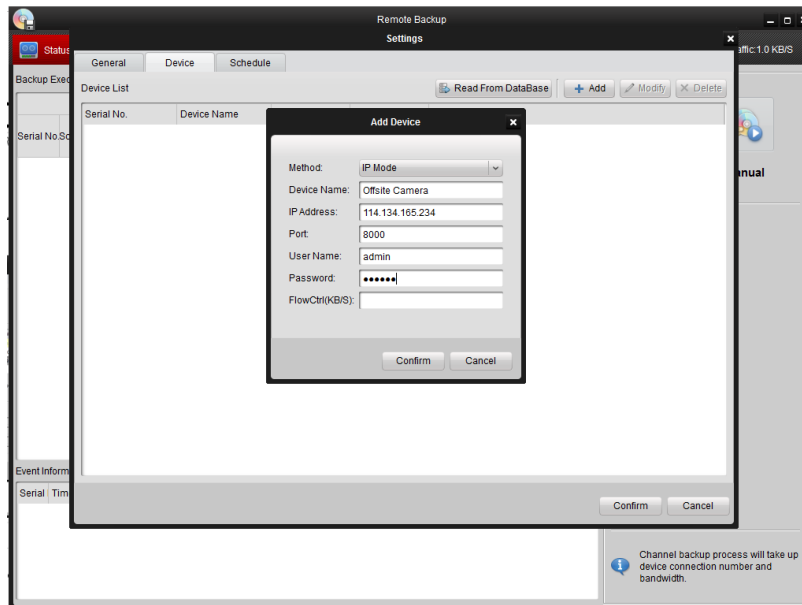
- 1: First you will need to add a storage device, Open the Auto Backup Software and go to “Settings”, under “General” you will see “Disk Allocate” and select the drive you wish to store your files on.



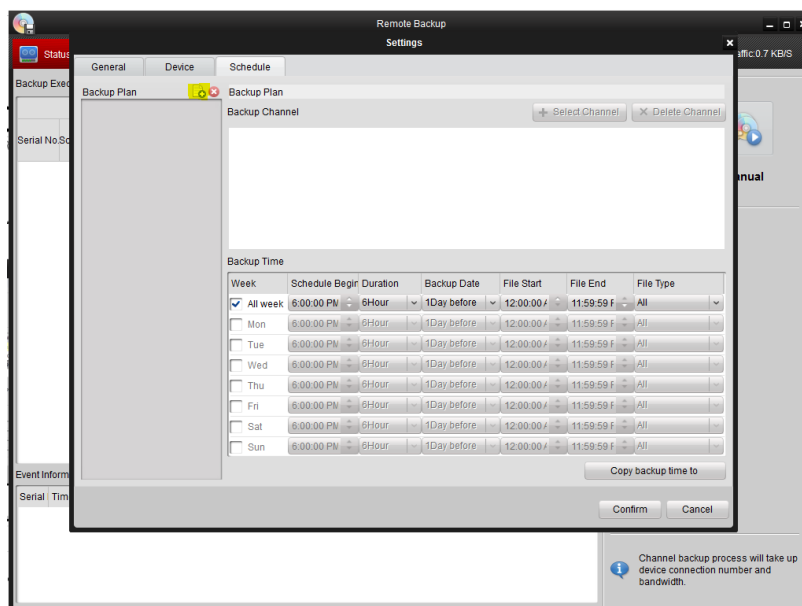
- 2: Now you need to add the device you wish to backup from. Click on the “Device” tab and select “Add”.



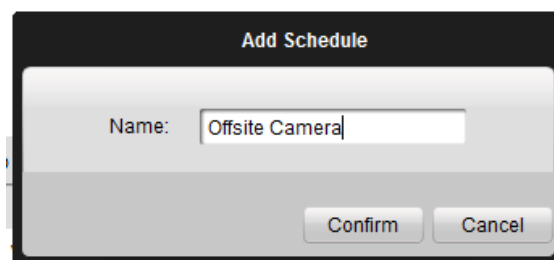
3: Enter all device credentials as required and click “Confirm”



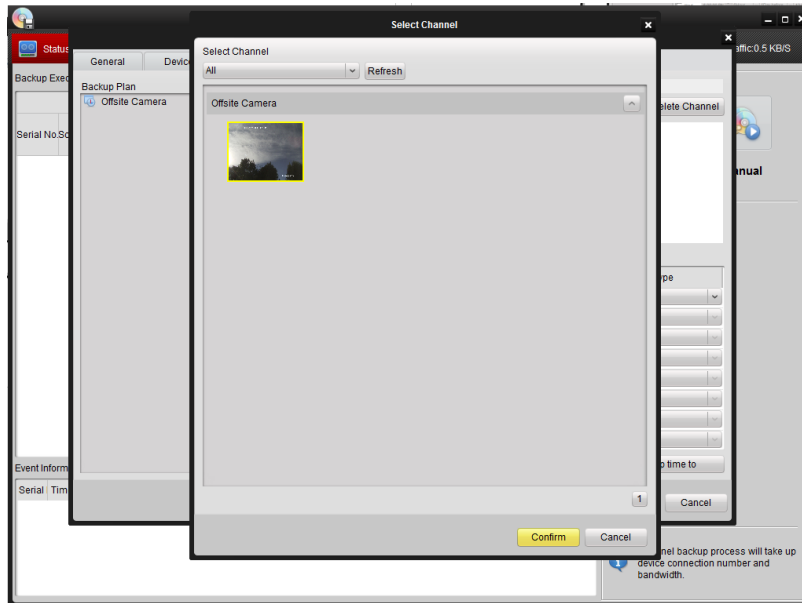
4: Now click on the “Schedule” tab and select “Add Schedule”.



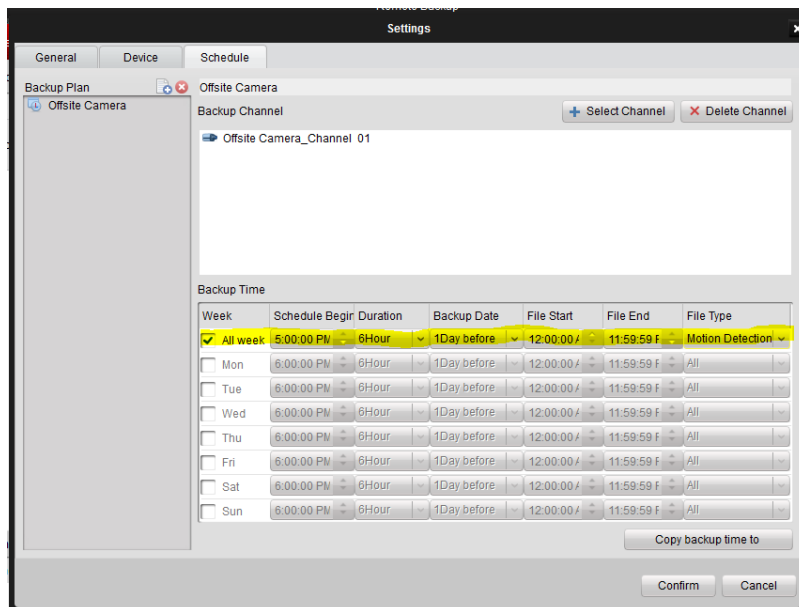
5: Assign the new schedule a name and click confirm.



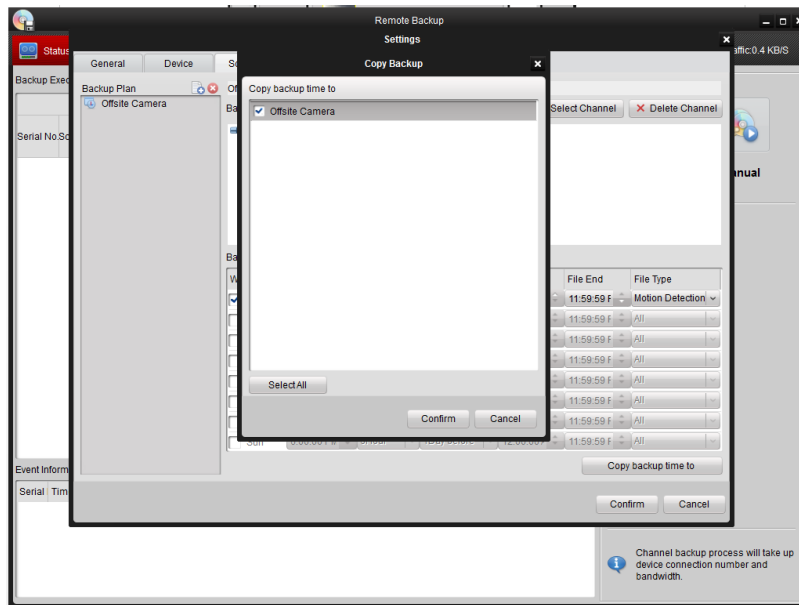
6: Select “Add Channel” and add the device to the schedule.



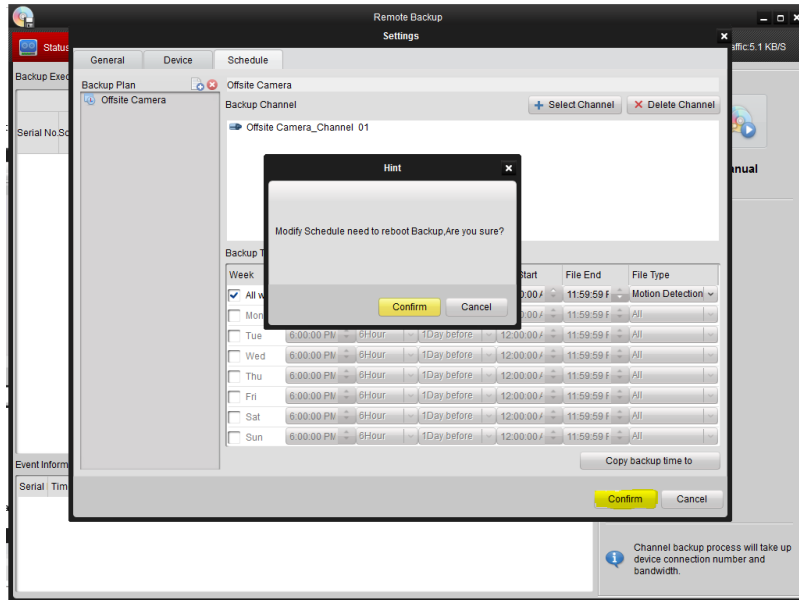
7: Create the Schedule required and click “Copy Backup time to”.



8: Select the Offsite device and click “Confirm”

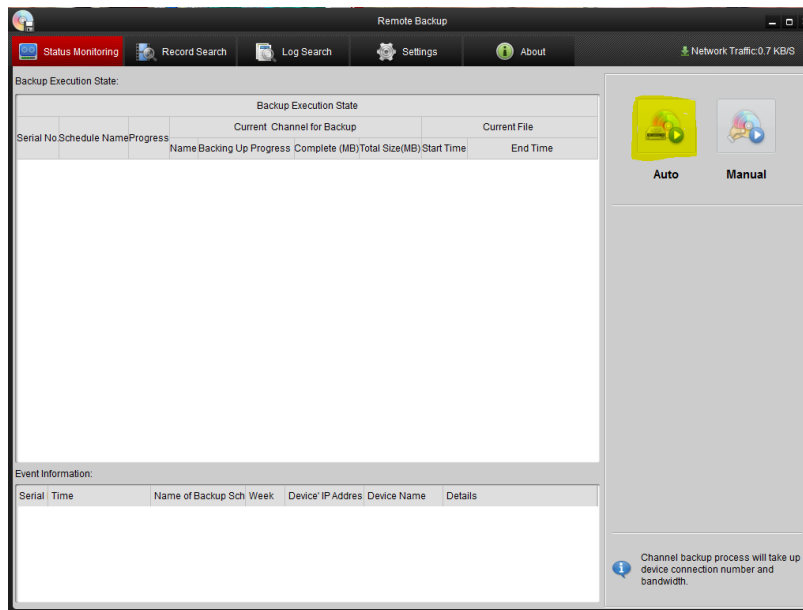


9: Click “Confirm” on the main screen and click “Confirm” again on the modification confirmation.



10: Shutdown and Restart the Software.

11: Select the "Auto" tab to engage the automatic data backup.



12: SUCCESS!!! The Hikvision Automated Backup Software will now start the backup at the scheduled time.