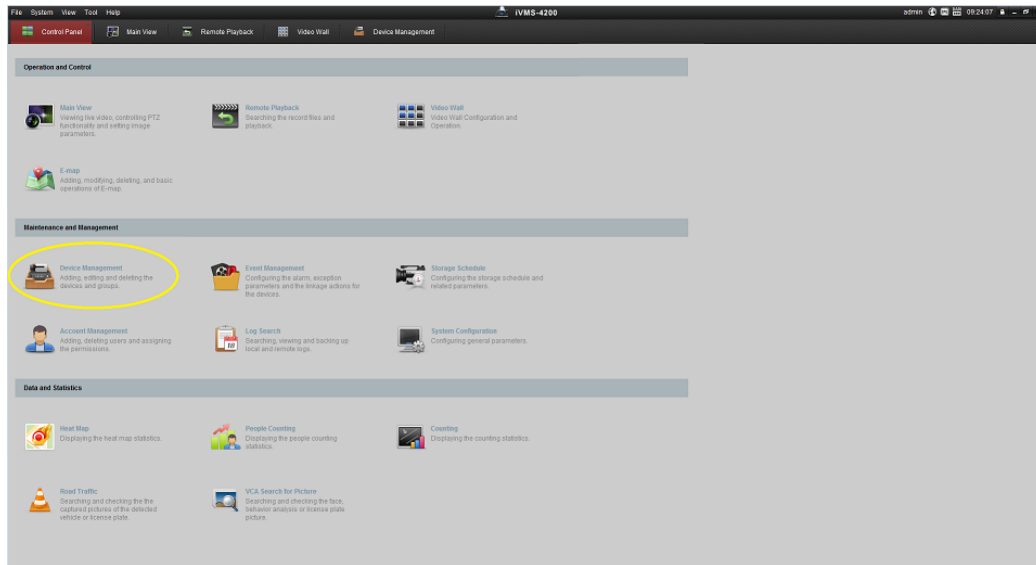




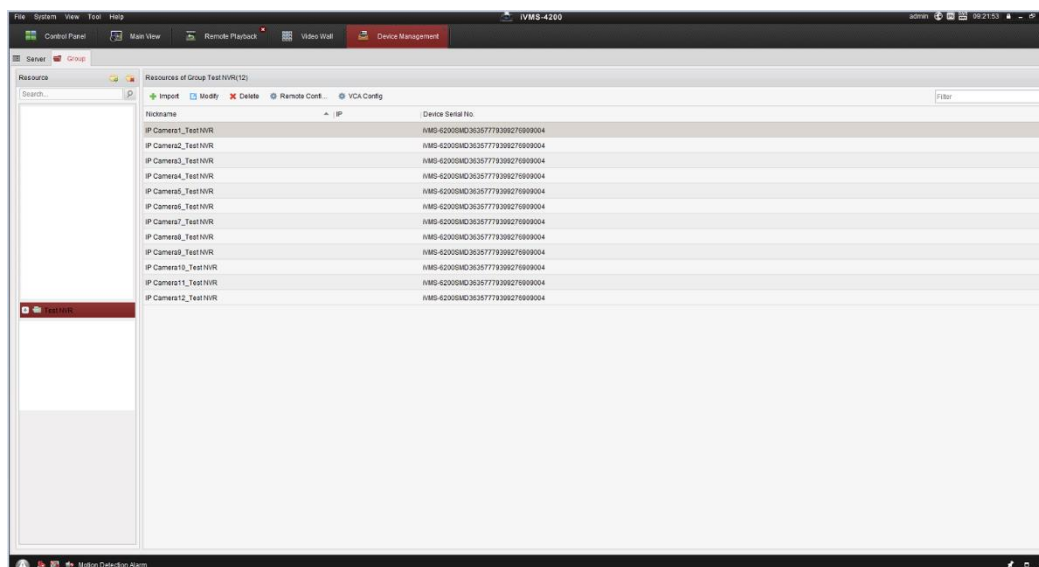
## How to import NVR/DVR Camera names into iVMS4200

**NOTE:** Ensure you are running iVMS 4200 2.3.1.3 (Available from the Atlas Gentech Security FTP Portal)

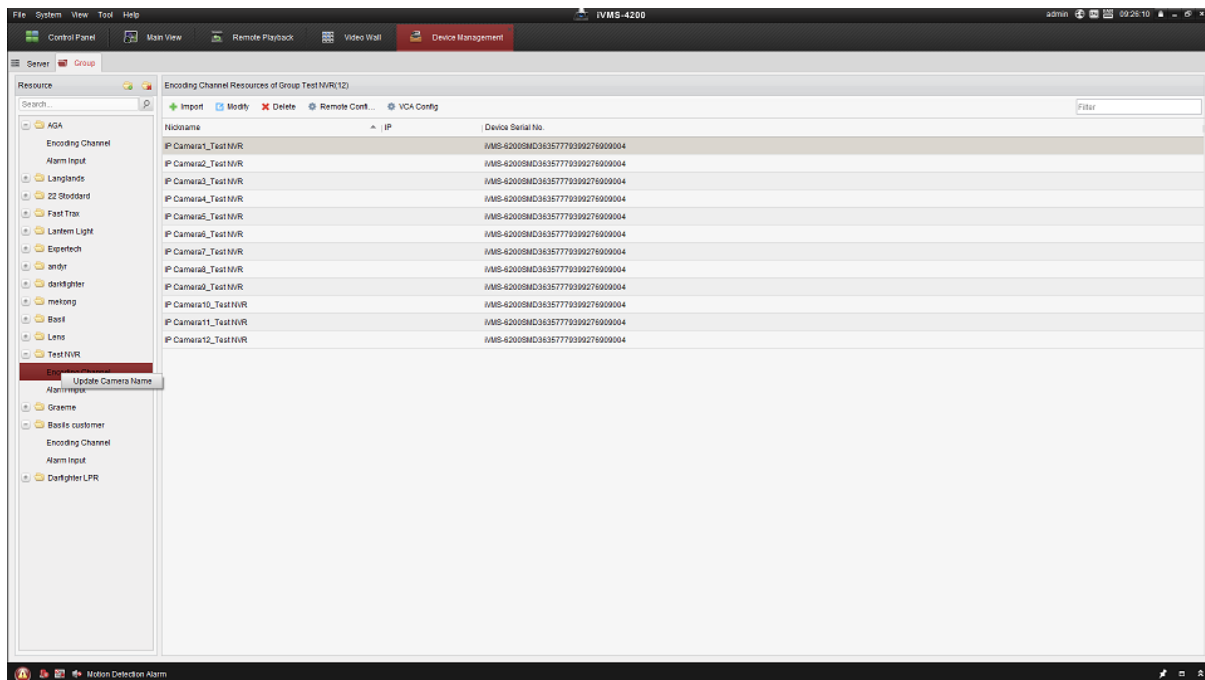
1: Open iVMS and go to the “Device Management” page



2: Within the device management select the “Group” tab



3: Click the “+” symbol to maximize the folder, right click “Encoding Channel” and select “Update Camera Name”



4: All camera names on the NVR/DVR will now be carried through to your iVMS 4200 software.