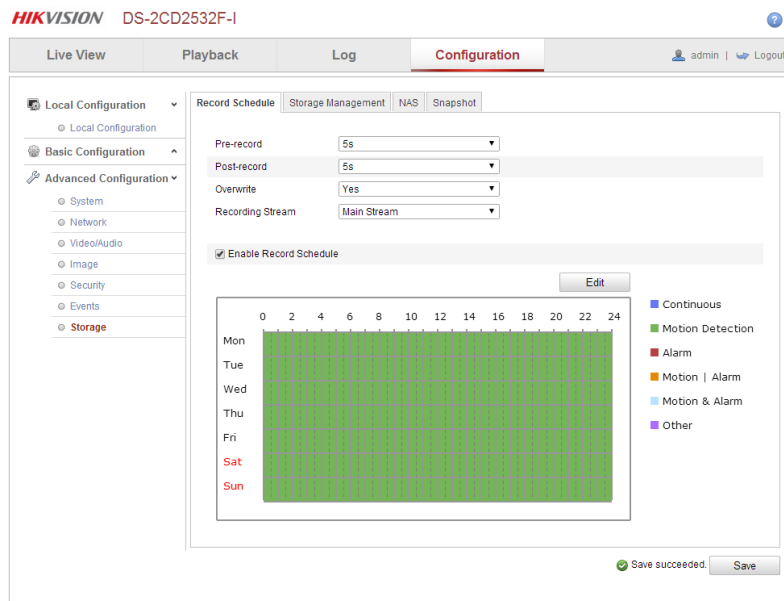
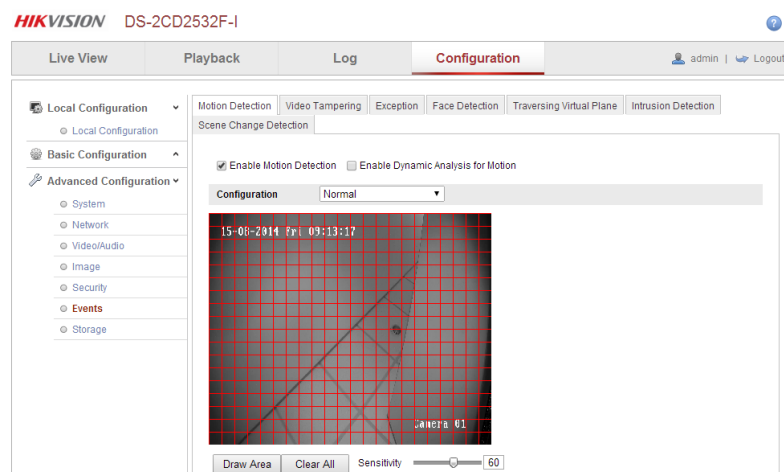


1: Within the camera configuration you will need to setup a record schedule, this is done so that the camera knows when to record and in what streams.



2: If you have created a motion record schedule ensure that you have enabled the motion detection as shown below. Check your sensitivity and click "Save"



3: Within the Linkage Method at the bottom of the “Motion Detection” page ensure you check the “Notify Surveillance Centre” and “Trigger Channel” boxes. Without this the data will not be recorded.

Normal Linkage	Other Linkage
<input checked="" type="checkbox"/> Notify Surveillance Center	Trigger Alarm Output <input checked="" type="checkbox"/> Select All
<input type="checkbox"/> Send Email	
<input type="checkbox"/> Upload to FTP	
<input checked="" type="checkbox"/> Trigger Channel	

4: Under the “Storage Management” tab, you will need to ensure that your on-board SD Card has been formatted and is in a “Normal” state that has an R/W property. Once this is confirmed click “Save” and exit the programming.

HIKVISION DS-2CD2532F-I

Live View Playback Log **Configuration** admin | Logout

Local Configuration Basic Configuration Advanced Configuration

Record Schedule **Storage Management** NAS Snapshot

HDD No.	Capacity	Free space	Status	Type	Property	Progress
1	7.40GB	7.00GB	Normal	Local	R/W	

Quota

Max. Picture Capacity: 1.75GB

Free Size for Picture: 1.75GB

Max. Record Capacity: 5.25GB

Free Size for Record: 5.25GB

Percentage of Picture: 25%

Percentage of Record: 75%

5: SUCCESS!!!! You now have a fully operational on board storage recording camera.