

INTRODUCTION

Model	Description
SD-301	Indoor EPoC surge protector for XE10-110-RX & XE11-110-RX

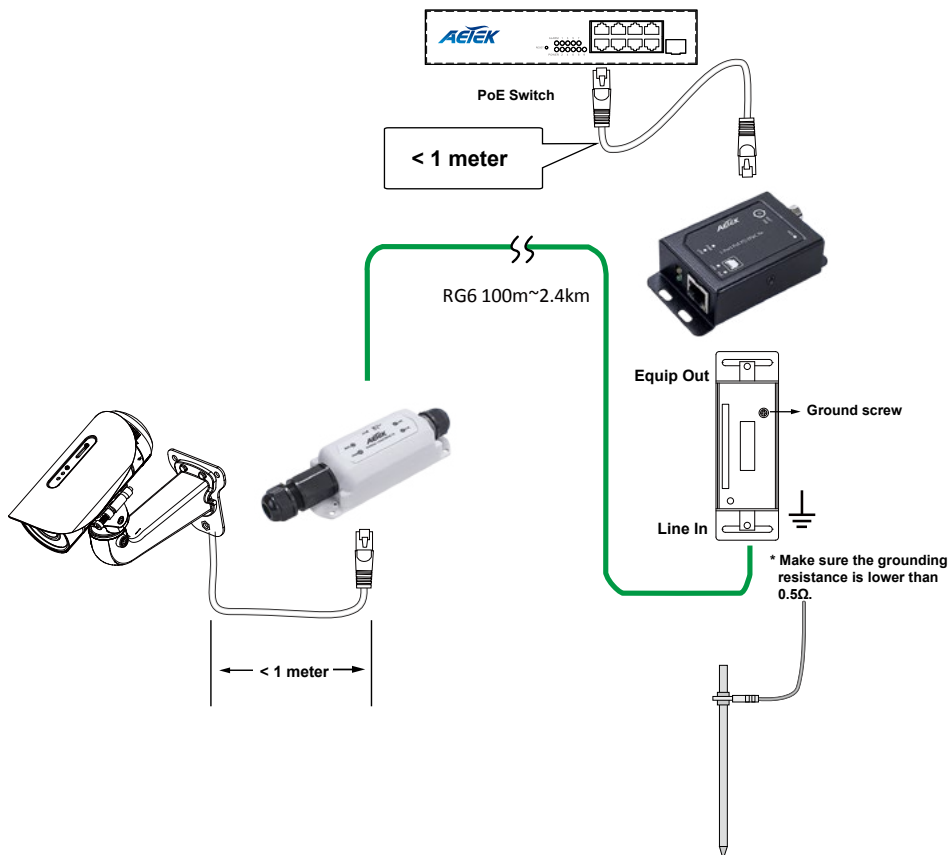
PACKAGE CONTENTS

* 1x surge protector	* 1x Quick Installation Guide	
----------------------	-------------------------------	--

⚠ IMPORTANT:

1. Use RG6 coaxial cables.
2. The cabling distance between the surge protector and the protected device should be less than 1 meter.

CONNECTION



LEDs

LED definitions:

OFF when operating normally, ON when out of service life.