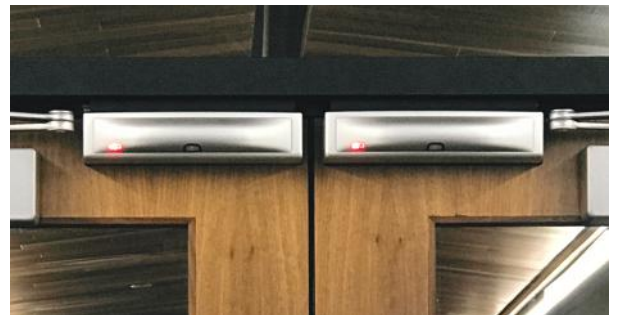


Securitron® Magnalocks® Overview

ELECTRONIC SECURITY HARDWARE SECURITRON PRODUCTS

Experience a safer
and more open world





Universal

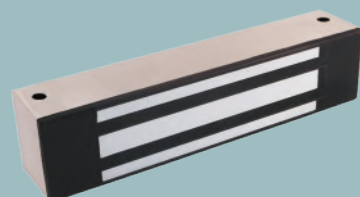
Surface Mounted | Outdoor Rated

Securatron M32

600 lbs holding force, direct mounted Magnalock® for exterior applications within secured or monitored perimeters. The ultimate in reliability and durability. BondSTAT monitoring, DPS, and strike plate options available.

Electrical

- 300 mA at 12 VDC
- 150 mA at 24 VDC

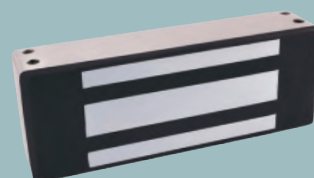


Securatron M62

1200 lbs holding force, direct mounted Magnalock for high-use, higher security exterior applications. The ultimate in reliability and durability. BondSTAT monitoring, DPS, and strike plate options available.

Electrical

- 250 mA at 12 VDC
- 150 mA at 24 VDC

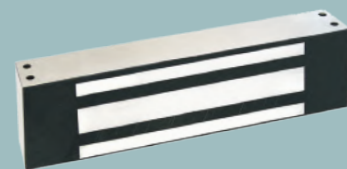


Securatron M82

1800 lbs holding force, direct mounted Magnalock. Industrial strength hold for challenging indoor/outdoor environments. Unsurpassed in reliability and durability. BondSTAT monitoring, DPS, and strike plate options available.

Electrical

- 350 mA at 12 VDC
- 200 mA at 24 VDC



Securatron DM62

1200 lbs holding force, direct mounted Magnalock for high-use, higher security exterior applications. With unsurpassed durability and designed for double doors with no mullion.

Electrical (per lock)

- 250 mA at 12 VDC
- 150 mA at 24 VDC



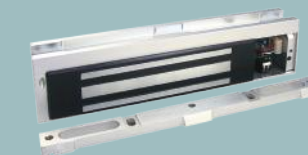
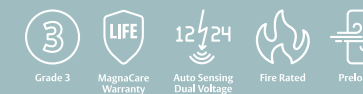
Bracket Mounted | Indoor Applications

Securatron M38

600 lbs holding force, easy-to-install bracket mounted Magnalock for interior applications within secured or monitored perimeters. Options for DPS, LED indicator and Tamper Monitor.

Electrical

- 350 mA at 12 VDC
- 170 mA at 24 VDC

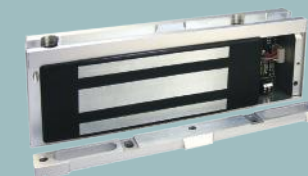


Securatron M68

1200 lbs holding force, easy-to-install bracket mounted Magnalock for high-use, higher security interior applications. Options for DPS, LED indicator and Tamper Monitor.

Electrical

- 250 mA at 12 VDC
- 125 mA at 24 VDC



Surface Mounted | Durable Outdoor Rated | Hard-to-Wire or Exposed Applications

Securatron M62FG

1200 lbs holding force, face mounted Magnalock for high-use, higher security exterior applications. With gate conduit for hard-to-wire or exposed applications.

Electrical

- 250 mA at 12 VDC
- 150 mA at 24 VDC



Securatron M82FG

1800 lbs holding force, face mounted Magnalock. Industrial strength hold for challenging indoor/outdoor environments. With gate conduit for hard-to-wire or exposed applications.

Electrical

- 350 mA at 12 VDC
- 200 mA at 24 VDC



Concealed

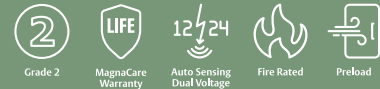
Discreet | Swinging or Sliding Applications

Securiton SAM

1200 lbs holding force, shear aligning Magnalock. Concealed with flexible mounting options for any application.

Electrical

- 320 mA at 12 VDC
- 170 mA at 24 VDC

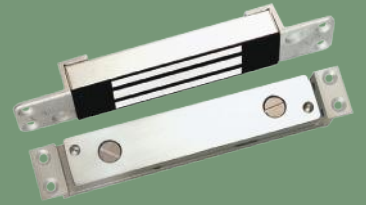


Securiton SAM2-24

600 lbs holding force, shear aligning Magnalock. Concealed, compact and versatile for smaller applications.

Electrical

- 84 mA at 24 VDC

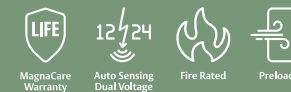


Securiton M34R

500 lbs holding force, recessed Magnalock. Concealed and designed for single sliding doors.

Electrical

- 320 mA at 12 VDC
- 170 mA at 24 VDC



Intelligent

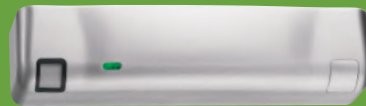
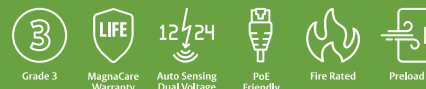
Strength | Aesthetics | Sustainability

Securiton M380E

600 lbs holding force, bracket mounted, sustainable Magnalock. Energy-efficient with BondSTAT monitoring and DPS. Option for PIR Request to Exit.

Electrical

- Magnalock Average Power Draw (±10%)
 - » 140 mA at 12 VDC
 - » 90 mA at 24 VDC
- Magnalock Maximum Power Draw (±10%)
 - » 585 mA at 12 VDC
 - » 310 mA at 24 VDC
- REX Power (±10%)
 - » Adds 25 mA at 12 VDC
 - » Adds 10 mA at 24 VDC



Securiton M680E

1200 lbs holding force, bracket mounted, sustainable Magnalock. Energy-efficient with options for BondSTAT monitoring, DPS and PIR Request to Exit.

Electrical

- Magnalock Average Power Draw (±10%)
 - » 113 mA at 12 VDC
 - » 52 mA at 24 VDC
- Magnalock Maximum Power Draw (±10%)
 - » 585 mA at 12 VDC
 - » 310 mA at 24 VDC
- REX Power (±10%)
 - » Adds 25 mA at 12 VDC
 - » Adds 10 mA at 24 VDC



Integrated

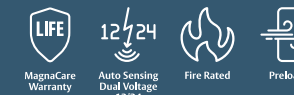
Delayed Egress | Code Required by Application

Securiton iMXDa

Configurable, 1200 lbs holding force, delayed egress Magnalock. Integrated movement exit delay with advanced technology, designed for out-swing doors in sensitive applications designed to help prevent peril to persons/patients and property loss/theft for business.

Electrical

- 370 mA max at 12 VDC
- 270 mA max at 24 VDC



Securiton iEXDa

Configurable, 1200 lbs holding force, delayed egress Magnalock. Designed for out-swing doors in sensitive applications. Similar to the iMXDa, the iEXDa model allows alarm initiation via an external panic device.

Specialty

From 170 lbs up to 4,000 lbs | Indoor and Outdoor Rated

Securiton MCL

Compact and versatile cabinet locking solution. Extends access control to all sizes and shapes of cabinets and enclosures that require asset protection.

Electrical

- 84 mA at 24 VDC



Securiton M32-SS

Durable, power-efficient split strike Magnalock provides double-door cabinet control. Each strike plate delivers 300 lbs of holding force (600 lbs total).

Electrical

- Dual voltage 12/24 VDC
- 300 mA at 12 VDC
- 150 mA at 24 VDC



Securiton M62FG-SASM

Shock-absorbing 1200 lbs Magnalock solution for outdoor gates. Heavy-duty, weather-resistant maglock comes equipped with conduit fittings and a special shock absorbing strike mount.

Electrical

- 250 mA at 12 VDC
- 150 mA at 24 VDC



Securiton MM15

4,000 lbs holding force, bracket mounted, magnetic electromechanical lock. The unique hybrid design includes two spring-loaded, hardened steel jaws designed to prevent forced-entry assault and provide an unmatched level of access control.

Electrical

- AC Current: 130 mA at 12 VAC; 250 mA at 24 VAC
- DC Current: 100 mA at 12 VDC; 200 mA at 24 VDC



M32, M62, M82 Accessories



ASB Aluminum Spacer Bracket

- Use when a blade stop requires the Magnalock to be lowered.
- Comes pre-drilled for the mounting bolts and wire.
- Provides a blind nut for surface installation of strike.



TDK-1 Accessory for Thick Doors

- Provides replacement screws so armature plates for the M32, M62, M82, M38 and M68 can be used on doors thicker than 1-3/4" [44.45mm], and up to 3" [76.2mm].



CWB Concrete Wood Bracket

- Used on wood or concrete filled metal frames.
- Provides a concealed wire chamber.



SB-1 Sex Bolt Replacement

- Replaces armature plate sex bolt for M32, M38, M62, M68 and M82B Magnalocks.



AOS Offset Strike Plate

- Alters the position of the mounting hole by 1/4" [6mm]. This is often required to clear the glass on aluminum frame store front doors.
- Includes Offset Strike Plate only.



DC Dress Covers

- Install using foam adhesive tape.
- Available in clear, black, polished stainless and polished brass finish.



ASS Split Strike/Replacement Strike Plate

- Allows a single M32, M62 or M82 Magnalock to secure a double door at traffic control holding force level.
- Includes Split Strike Plates, hardware pack, and Sex Bolt.



DDC Double Dress Covers

- Will cover a pair of Magnalocks on a double door (if they are separated by no more than 2").
- Not for use with the DM62 Magnalock.



ZA Z Bracket Kits - Adjustable

- Use on in-swing doors with Magnalock "F" options (8-1/2" [215.9mm] overall length).
- Provides 1-1/4" [31.75mm] of lateral movement to accommodate most openings and allows for precision adjustments (2-1/4" to 3-1/2" [57.15mm to 88.9mm] from door/header).



HHD / HHSL / HHSR / HVD Full Length Housings

- Vertical or horizontal configurations.
- Available in clear, black, polished stainless and polished brass finish.
- Fit one or two locks (not included).
- Specific housings available in either left or right hand reverse.



EASB Energy Absorbing Sex Bolt

- For high-security applications on inflexible doors.
- Replaces the standard Sex Bolt.
- Contains a powerful internal spring that absorbs and dissipates the force of a blow.

M38, M68 Bracket Mounted Accessories



DC Dress Covers

- Install using foam adhesive tape.
- Available in polished stainless.



TJ Top Jamb-In-Swing Door Kit

- Used to mount the lock on the secure side of a door that swings into a secured area.

Universal Magnalock Accessories



IK Installation Kit

This convenient, cost effective kit contains everything an installer needs to achieve professional, high quality Securitron Magnalock® installations. The IK offers substantial savings over purchasing the same items separately.

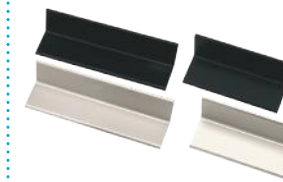
Securitron's original installation kit includes the following components:

- | | | |
|----------------------------|----------------------------------|-----------------------------------|
| • Tool Box | • Hardware Packs for M32/M62/M82 | • 3/8" Cobalt Drill Bit |
| • Heavy Duty Drill Guide | • Rubber Washers | • 3/8" Carbide Drill Bit |
| • Blind Nut Placement Tool | • Flat Washers | • 1/2" High Speed Drill Bit |
| • Sex Bolt - M32/M62/M82 | • Insulated Crimp Connectors | • Blind Nuts with Collapsing Tool |
| • T-Handle Hex Wrench | • Threadlock | • Finish Caps |
| | • 1/8" Cobalt Drill Bit | • Long Screw Pack |



Glass Door Accessories

- HEB-3G allows for Magnalock installation on all-glass header when used with AKG.
- GDB permits strike plate installation on a solid glass door.
- AKG permanently bonds to the glass using a special industrial adhesive.
- Strike Plate screws into the bracket, as glass doors cannot be drilled.
- Use HEB-3G with M32, M62, 3" x 3" x 8" [76.2mm x 76.2mm x 203.2mm] with specially milled back.



HEB Header Extension Bracket

- 90 degree angle brackets.
- Extends narrow headers to permit proper mounting of Magnalocks.



UHB Universal Header Bracket

- Used to extend the header 1" [25.4mm] or 1-1/2" [38.1mm].
- Provides a concealed wiring chamber.



SFP Stop Filler Plate

- Used to fill or extend a door stop.
- Creates a flat mounting surface for the Magnalock®.
- Available in 1/4" [6mm], 3/8" [8mm], 1/2" [13mm] and 5/8" [16mm] thickness, all 1-1/4" [32mm] wide.

Genuine Magnalock® Selection Guide

Out-Swing Door Magnalock Selection Guide

Locks mount on the secure side of the door and door swings away from secure side. Dual doors will require two locks (x2), one for each leaf (except for DM62).

Preferred Application = ✓

DOOR TYPE	M32	M380E	M62	M680E	M82	SAM
Glass Door (w/ Aluminum Frame)	✓	✓		✓		
Wood Door (Traffic Control)	✓	✓				
Wood Door (High Security)			✓	✓	✓	
Metal Door (Traffic Control)	✓	✓				
Metal Door (High Security)			✓	✓	✓	
Herculite Door (w/out Top or Bottom Rail)	✓			✓		
Herculite Door (w/Top or Bottom Rail)				✓		✓

In-Swing Door Magnalock Selection Guide

Locks mounted on the secure side of the door and door swings toward secure side. Dual doors will require two locks (x2), one for each leaf.

Preferred Application = ✓

DOOR TYPE	M32F	M38	M62F	M68	M82F
Glass Door (w/ Aluminum Frame)	✓	✓			
Wood Door (Traffic Control)	✓	✓			
Wood Door (High Security)			✓	✓	
Metal Door (Traffic Control)		✓			
Metal Door (High Security)			✓	✓	✓

All Securitron Magnalocks are fail safe electric locking devices.

Sliding Door Magnalock Selection Guide

Preferred Application = ✓

DOOR TYPE	M34R	SAM
Double Sliding Doors		✓
Single Sliding Doors	✓	



The ASSA ABLOY Group is the global leader in access solutions. Every day we help people feel safe, secure and experience a more open world.

ASSA ABLOY
Opening Solutions

ELECTRONIC SECURITY HARDWARE

HES | Securitron

USA

800 626 7590 | F. 866 582 4641 | assaabloyesh.com
customerservice.esh@assaabloy.com | techsupport.esh@assaabloy.com | orders.esh@assaabloy.com

CANADA

800 461 3007 | assaabloydss.ca
sales.dss.ca@assaabloy.com | orders.dss.ca@assaabloy.com

Connect with ASSA ABLOY Electronic Security Hardware

  @assaabloyesh   ASSA ABLOY Electronic Security Hardware

Printed in the USA

Patent pending and/or patent www.assaabloydss.com/patents

Copyright © 2021, Hanchett Entry Systems, Inc., an ASSA ABLOY Group company. All rights reserved. Reproduction in whole or in part without the express written permission of Hanchett Entry Systems, Inc. is prohibited. ESH-SEC-71-0521