

Lockwood Keyless Locking Solutions



We take the worry out of
protecting what's valuable to you.
Lockwood: *no worries*[®]

LOCKWOOD

ASSA ABLOY

25YEAR MECHANICAL
WARRANTY

www.lockweb.com.au



Keyless Entry



Never carry keys again!

Imagine never having to carry keys to your home.

Lockwood is leading the way in technology with a range of 6 exciting keyless locks to fit in with your lifestyle. Each has different features which this brochure will guide you through to help you select the right product for your and your family's needs. Not only is keyless locking more convenient, but it also puts a stop to lost keys and lock outs.

With the added peace of mind offered by Lockwood's 25 Year Mechanical Warranty and range of safety features, there's no better time to go keyless.

Make your world keyless with **Lockwood: no worries®**.



Keyless Digital Deadlatch



Keyless Digital Deadbolt



Keyless Entry Lockset



Code Handle Keyless Lockset



530DX Keyless Entrance Set



002DX Keyless Deadlatch

Keyless Digital Deadlatch

- Unlock with pin or key card
- Program multiple user codes



The 001 Touch™ Digital Deadlatch combines a stylish digital touch screen keypad with the security of the iconic Lockwood 001® Deadlatch. The simple convenience of using a pin code means you never have to carry keys again!

Illuminated touchscreen keypad

The touch screen keypad has no mechanical buttons which means no trace of your secret pin code.

Pin code or key card

Choose the convenience of a pin code or key card. One master pin code will manage up to twenty user pin codes. Up to 20 key cards can also be programmed.

Cryptic code function

Prevent others from identifying your pin code during access. The cryptic code function confuses the onlooker but at the same time allows you to still gain entry.

User code that expires

A temporary pin access code can be programmed to last from three hours to two weeks. This is ideal for allowing short-term access to your property and reduces the potential risks in giving your keys to a tradesman, cleaner or neighbour.

Visual guide for programming

For added convenience, an illuminated guide will assist in the programming of your 001 Touch™.

Low power consumption

Four standard AA batteries will unlock a door up to 10,000 times. A warning light will appear when the battery level reaches less than 30%.

Battery check function

The battery level can be checked without removing the batteries.

Emergency battery connection

In the event the battery goes flat, two battery contact points will fit a standard 9V battery. A temporary charge will allow entry with the pin or key card.

Smart memory

The settings, codes and key cards will remain programmed in the lock should the batteries go flat.

Keyless Digital Deadlatch

Internal Case Assembly	High purity zinc alloy
Battery Cover	High quality ABS plastic
Backset	60mm
Latch	Stainless Steel 18mm projection
Door Thickness	32mm to 50mm
Finish	Chrome Plate



Safety Release®
Minimises the risk of being locked in.



Emergency 9V Battery Connection
in the event your batteries are depleted.



Lock Alert™
Indicator shows lock status at a glance.



2 Keys Included
Can be keyed alike to other Lockwood door locks.



Digital Touch Screen
Illuminated keypad.



Batteries
Included.



Proximity Card
2 key cards included.



Retrofittable
Replace your existing 001® Deadlatch.



Deadlatch Bolt
Stainless steel 18mm projection.



Inside



Outside

Keyless Digital Deadbolt

- Touch screen pin code access
- Program multiple user codes



No Keys? No Worries. The Lockwood Digital Deadbolt lets you unlock your front door by entering a simple code.

Ideal for use on new doors or as a replacement on an existing door lock on your home, the Keyless Digital Deadbolt is also suitable for internal and light commercial doors such as storerooms and shop fronts.

Illuminated touch screen keypad

The touch screen keypad has no mechanical buttons which means no trace of your secret pin code. One master pin code will manage up to twenty user pin codes.

Cryptic code function

Prevent others from identifying your pin code during access. The cryptic code function confuses the onlooker but at the same time allows you to still gain entry.

Visual guide for programming

For added convenience, an illuminated guide will assist in the programming of your Digital Deadbolt.

Low power consumption

Four AA alkaline batteries will unlock a door for approximately 12 months if used 10 times per day. A battery icon will begin flashing when the battery level reaches less than 30%.

Emergency key override

In the event your battery goes flat there is a key override function that will prevent you from being locked out.

User code that expires

A temporary pin access code can be programmed to last from three hours to two weeks. This is ideal for allowing short-term access to your property and reduces the potential risks in giving your keys to a tradesman, cleaner or neighbour.

Code lockout settings

Privacy mode allows you to deactivate the external keypad from the inside providing a secure environment from others who may have pin code access. By using your master pin, you can also restrict all user pin access.

Keyless Digital Deadbolt

Front & Back Escutcheon	High purity zinc alloy
Back Plate	Hardened steel
Backset	Adjustable 60mm or 70mm
Bolt	Zinc alloy 25mm projection
Internal thin doors	Plastic gasket (32mm-36mm)
External thick doors	Rubber weather resistant gasket (37mm - 50mm)
Finish	Powder Coated Silver



Digital Touch Screen
Illuminated keypad.



Emergency Key Override
2 Keys included.



Batteries
Included.



Tapered Bolt
For ease of alignment to strike.



Kinetic Defence®
Bump and pick resistant.



Inside



Outside

Keyless Entry Lockset

- Unique LockAlert® indicator shows lock status at a glance
- SafetyRelease™ function minimises the risk of being deadlocked inside



Vision Plate with Spire L3 Lever, Chrome Plate



The Lockwood Keyless Entry Lockset provides protection for your home and family with the added convenience of remote control locking. This stylish lock is available in a range of designer Lockwood Handle styles, enabling you to achieve a consistent look throughout your home.

Remote operation convenience

- 3 meter range keyless operation with Q-Key remote control
- Use same remote with multiple Nexion Keyless Entry Locksets
- Up to 50 Q-Key remotes can be programmed
- Provides audio and visual indication of lock activation and deactivation

Security

Conforms to Australian Standard AS4145.2-2008 S₁7D8C5K6

Range of styles to suit your home

The Lockwood Keyless Entry Lockset is available in two different plate styles. A matching range of Lockwood Door Handles is also available, allowing you to achieve a consistent style throughout your home.

Safety features

SafetyRelease™ automatically unlocks the inside handle upon entry to minimise the risk of being locked in.

Note: Applies to double cylinder locksets.

Lockout Release automatically unlocks the outside handle when the inside handle or snib is operated.

LockAlert® indicator shows lock status at a glance.



Secure Mode
Red: Securely locked from both inside and outside. For when nobody is home.



Safety Mode
Yellow: Securely locked from outside and free from inside.



Passage Mode
Green: Free from both inside and outside.

Quick installation

- Suitable for inward and outward opening doors of a thickness between 35-45mm. Factory set for left hand opening doors, easily changed for right hand opening doors.
- Can be keyed alike with other Lockwood door locks.

Keyless Entry Lockset

Backset	60mm standard and 70mm backset latch available as an accessory on some models
Latch	13mm projection brass bolt
Door Thickness	35mm to 45mm
Cylinders	Internal and external, 5 pin tumbler mechanism with 6 pin capability, brass cylinders and brass barrels
Finishes	Gold (Classic plate only) Satin Chrome (Vision plate only) Satin Chrome Pearl Chrome Plate



Kinetic Defence®
Bump and pick resistant.



2 Keys Included
Can be keyed alike to other Lockwood door locks.



Remote Access
Remote Control Locking.



Quick Installation
Suitable for door thicknesses between 35-45mm.



Safety Release™
Minimises the risk of being locked in.
Note: Applies to double cylinder locksets.



Batteries Included
Included.



Lock Alert®
Indicator shows lock status at a glance.

Vision Plate



Outside



Inside

Classic Plate



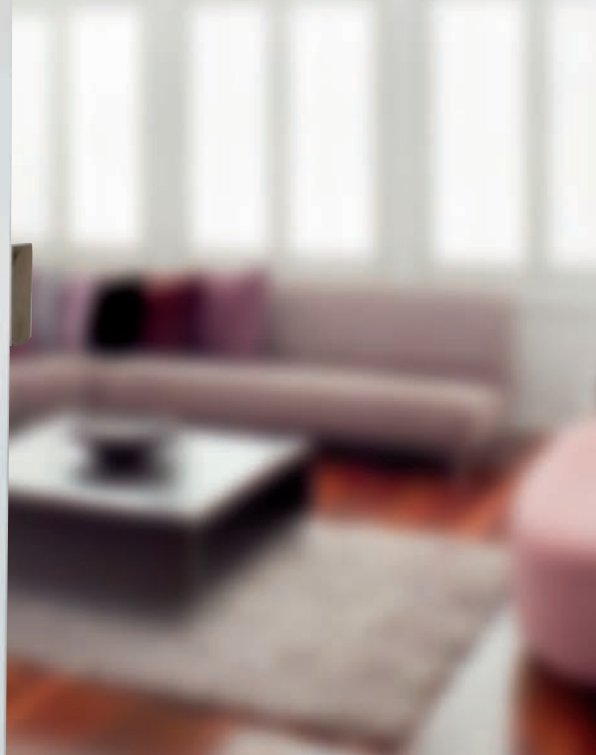
Outside



Inside

Code Handle Keyless Lockset

- Lever handle with integrated code lock
- Program multiple user codes



Lockwood's innovative door handle with integrated electronic security, offers simple and effective keyless locking, without compromising aesthetics.

Designed to enable conveniently controlled access to a door with easy installation, Code Handle is ideal for offices, store rooms or a study at home.

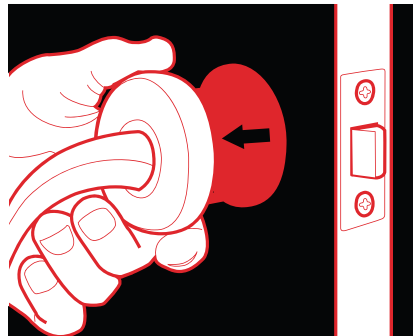
The Code Handle provides flexible locking options for doors that need to be always locked or alternatively can be left open to provide free access during the day and locked at night. The Code Handle is an electronic product that is not weather rated, so use should be limited to appropriate environments.

Key features

- Lever handle with integrated code lock
- Program up to 9 user codes, 4-6 digits in length
- Supplied with Lockwood 530 60mm latch
- Easy to install
- Ideal for retrofit installations
- Programmable administration code for setting lock operation and user programming
- Manual or automatic locking
- Passage mode
- Code lockout for 3 minutes after 5 incorrect attempts
- Durable stainless steel handles
- Left and right handed versions

Retrofitable

Fits majority of doors with a 54mm hole. Designed to provide convenient keyless access to a door by replacing the existing door handle.



Code Handle Keyless Lockset

Installation	25mm latch hole and 54mm lock hole
Backset	60mm (70mm and 127mm latches available)
Latch	Brass 13mm projection deadlatch
Door Thickness	32 to 55mm
Finish	Satin Pearl with Stainless Steel

Description Part Number

Left Hand Code Handle	8816LSS
Right Hand Code Handle	8816RSS



Door Thickness
32-55mm.



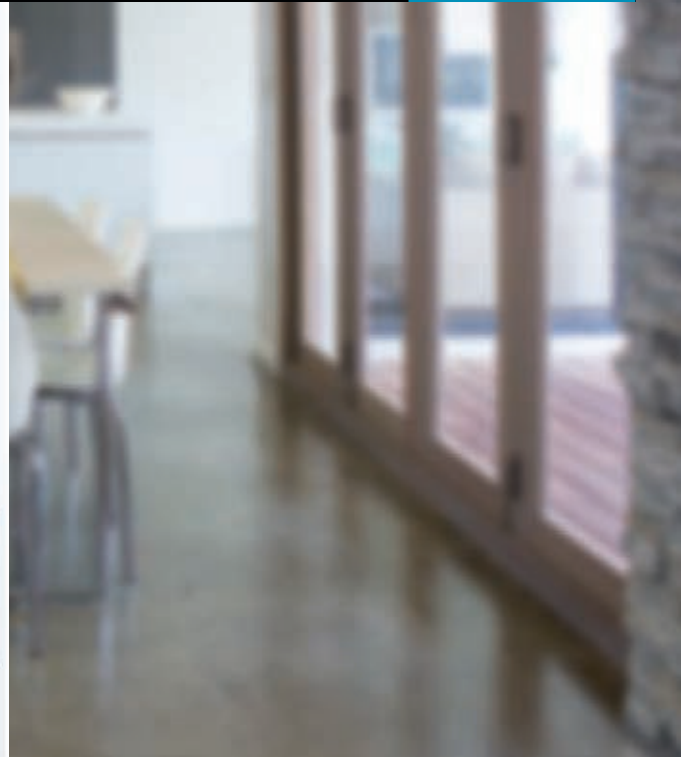
Batteries Included
Approximately 30,000 operations before replacement.



Quick Installation
Fitting instructions included

Mechanical Digital Locks

- No electrical wiring required
- Resettable combination



The Lockwood Digital DX Locksets provide a mechanical method of keyless entry and are designed to control access into commercial areas, especially when frequent combination changes are needed to maintain security.

As the digital lockset utilizes mechanical operation, electrical wiring is not required.

For extra security when under forced attack, the inbuilt clutching mechanism allows the outside knob to rotate without operating or damaging the lock.

The factory set 5 digit code is easily changed to any 4, 5 or 6 digit code using the code changing kit provided with each lock.

Outside function

Press the C button, enter the correct code, then turn the knob to unlock the door. Upon releasing the turn knob the code is automatically cancelled.

Inside function

Opened by knob/lever at all times.

002DX Keyless Deadlatch

Door Thickness	32mm to 45mm.
Latch	18mm projection, stainless steel
Backset	60mm
Internal Case Assembly	High purity zinc alloy, 92mm wide, 72mm high, 54mm projection
Finish	Satin Chrome Brushed*

* Finish denotes the finish on the digital code pad, the 002 lock body is supplied in Satin Chrome Pearl.



002 Digital DX Locks suit right or left hand doors opening inwards.

Hold-back function

002 Digital DX Locks have a bolt hold-back function activated by rotating inside knob/lever clockwise, past 90 degrees.

530DX Keyless Entrance Set

Door Thickness	32mm to 45mm.
Latch	13mm projection deadlatch, Brass
Backset	60mm standard. 70mm and 127mm latches available separately on application
Finish	Satin Chrome Brushed, Polished Brass
Options	Also available in double keypad version, which provides a keypad on each side of the door.



530 Digital DX Locks suit right or left hand doors opening inward and outward.

The Lockwood 530 Digital DX Entrance set has been successfully tested up to 2 hours on fire door assemblies (depending on type of doorset) in accordance with Australian Standard AS1905.1:2005, Fire Resistant Doorsets.



ASSA ABLOY

Lockwood is the leading brand in the Australian locking industry. With an established reputation for high quality products, this iconic brand provides a wide range of locking solutions to residential housing, commercial building and industrial application markets. Lockwood is supported by an extensive distribution and after-sales support network. Our customers include retailers, architects, trade and industrial personnel, locksmiths and security dealers.



ASSA ABLOY is the global leader in door opening solutions, dedicated to satisfying end-user needs for security, safety and convenience.

ASSA ABLOY is represented in all major regions, in both mature and emerging markets, with leading positions in Australia, Europe and North America.

25YEAR

**MECHANICAL
WARRANTY**

The Lockwood 25 Year Mechanical Warranty

Our belief that we manufacture the finest premium products available in today's market place is backed by the Lockwood 25 Year Mechanical Warranty, ensuring that Lockwood continues to keep Australians safe by delivering security and peace of mind.

For warranty terms and conditions, please visit www.lockweb.com.au or call **1300WARRANTY**

ASSA ABLOY Australia Pty Ltd
235 Huntingdale Road
Oakleigh, Victoria, 3166
Australia

1300 LOCK UP (1300 562 587)
lockweb.com.au

ASSA ABLOY New Zealand Ltd
6 Armstrong Road
Albany, Auckland, 0632
New Zealand

info.nz@assaabloy.com
Telephone +64 9415 7111
assaabloy.co.nz

