



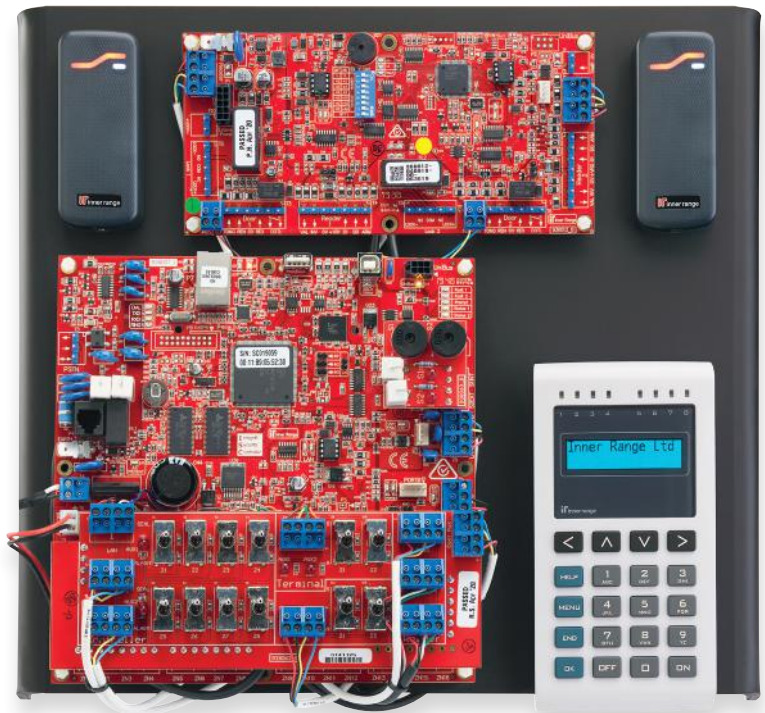
The Integrati Training Kit is purpose-built for those undertaking certified training or customer demonstrations. The kit contains the necessary hardware modules to get hands on experience with wiring and programming access control and intruder detection applications.

## Benefits

- A dedicated Training Kit for Certifying your Technicians
- Great for testing and customer demo purposes
- Includes 1 enrolment into the Self-paced Integrati Certified Course
- Easy to fault find
- Easy to assemble
- Affordable
- Great return on investment

## Kit Contents:

- 1 x Integrati Security Controller
- 1 x Integrati Standard LAN Access Module
- 2 x Sifer Readers
- 2 x Sifer P ISO Cards
- 1 x EliteX Terminal
- Matte Black Perspex's Test Bench
- Cable Accessory kit
- Custom Input/output board
- Custom Dual Siren Board
- Voucher Code for 1 Online Course Enrolment
- Meanwell AC/DC Plug pack UL Approved
- AU/NZ IEC Power Cord



## Specifications

### Electrical Specifications

Power Supply Source: AC/DC Plug pack

Input: 100-240VAC 50/60Hz 1.4A

Output: 24V 2.5A 60W MAX



## Ordering Options

IR-998062 Integrati Training Kit