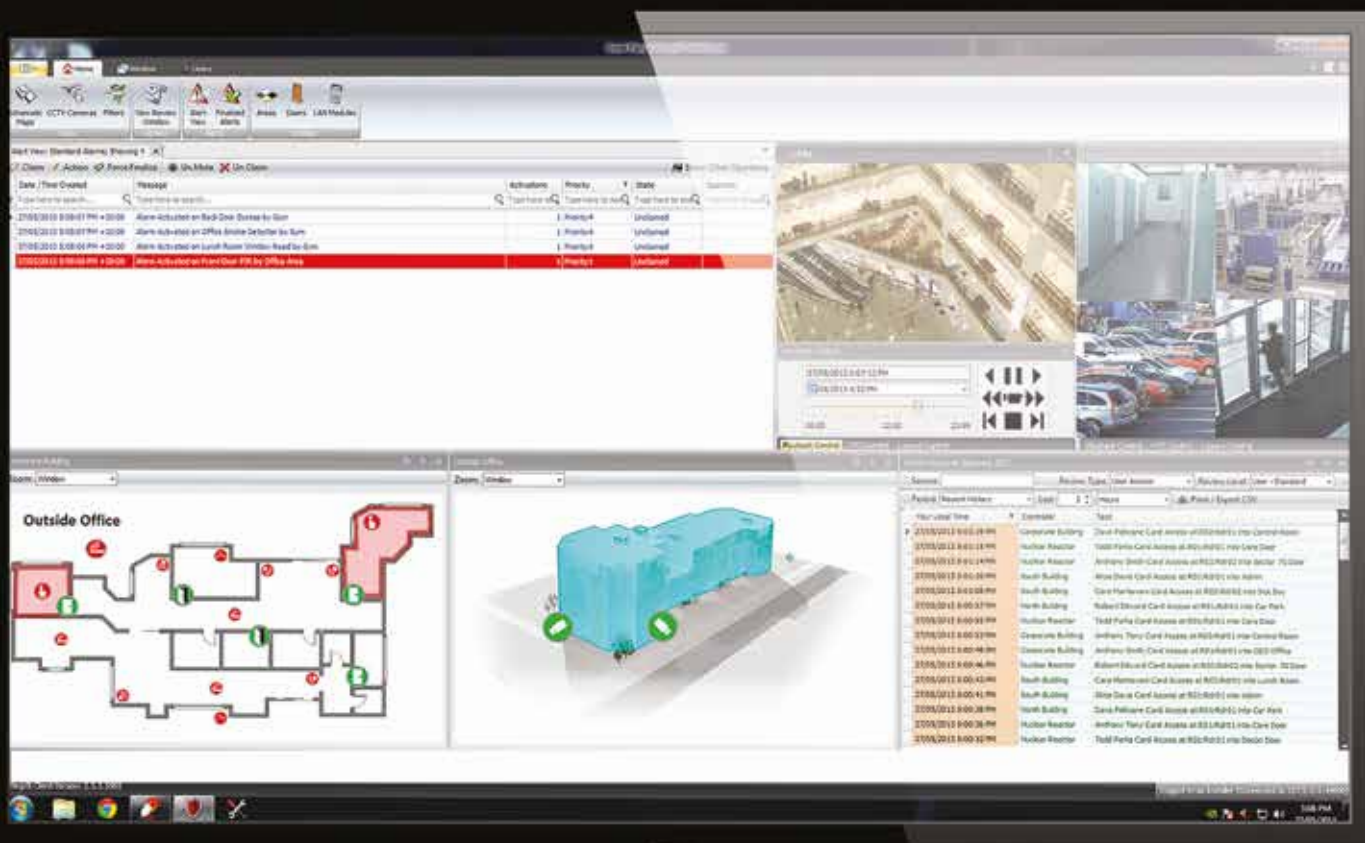


Software



The Integriti System Management Suite is a true cutting-edge solution. Featuring the very latest technologies, Integriti has been designed with an innovative and user-friendly design as its core focus.

Integriti Professional, Business & Corporate Software Editions offer everything your customer will need for complete system management. Each Edition includes GateKeeper and System Designer:

- Integriti **GateKeeper** for everyday card-holder programming, monitoring and control of the system.
- Integriti **System Designer** for full system programming and configuration.

Optional Web Client Interface and Smartphone Apps are also available.

Integriti Professional, Business & Corporate Editions

These Software Editions may be deployed on any number of local or remote sites. Individual sites retain their functional autonomy, while system users and permissions are managed globally across the entire organisation. These Editions also support a wide range of integration options to existing HR systems and a variety of third-party products.

Integriti Express

An Express version of Integriti is available for smaller single-controller sites. This is a great solution where the advanced features of the Professional version are not required.

Integriti Commissioning Software

Commissioning Software (CS) is also available for security technicians who are installing and commissioning Integriti systems. CS is provided to trained Inner Range security technicians.

Software features at a glance ...



Web Client Interface.



Programming and commissioning time significantly reduced via automated processes.



Build cardholder profiles by assigning multiple permissions with simple "Allow" or "Deny" functions.



Modern design, intuitive and simple to use.



Complete alarm management with powerful automated actions.



Rich graphics with interactive floor plans and scalable vector based maps.



Forensic audit trail recording every programming change with the ability to "roll-back" any change.



Email, text message and pager communications.



Easy-to-use reporting such as Time on Site, Muster and detailed commissioning reports.



Integration with Active Directory, HR, payroll and other database applications.



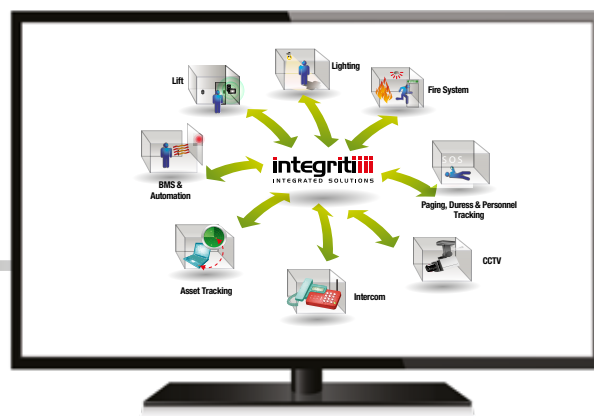
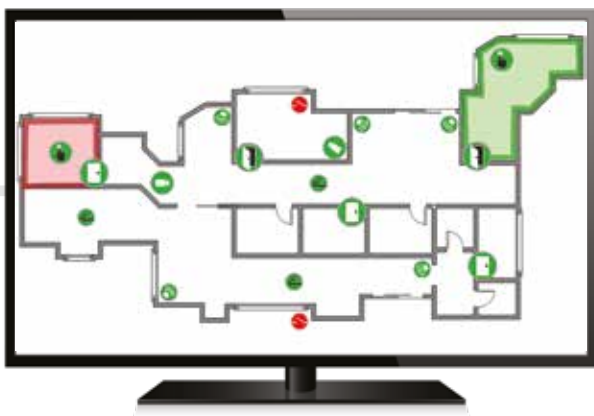
Upgrade firmware for all Integriti hardware modules.



Client/Server architecture, fully compatible with modern computing platforms using Microsoft SQL databases.



Integration with other systems: CCTV, Intercoms, Building Automation, Personnel Tracking, Mobile Duress and many more. Use Integriti as an over-arching Security Management System for complete control of security and facility services.



Integriti Security Management Software is available in four individual editions. Starting with the entry level Express edition and expanding through to the highly featured Corporate edition, Integriti Software offers the perfect security management solution for any organisation.



Professional Edition - 996901

The Professional Edition provides powerful tools for systems that require multiple Controllers and multiple sites. With no limit to the quantity of Controllers or Integriti Mobile App connections Professional is designed to centrally manage large security and access control systems that may extend over many geographical locations. Professional also includes power features such as Communicator for sending email, SMS and pager messages, Dynamic User Importing tool for importing card holder data from third-party systems and Photo ID card designer.

Express to Professional Upgrade – 996905UPG



Business Edition - 996901B

The Business Edition is designed for organizations that use Integriti Software as part of their every day routine and site security management. Inclusive of all the features available in Express and Professional, the Business Edition extends the scope of the system to include powerful functions such as Advanced Reports, the Integriti Web Interface, Active Directory integration and CCTV integration with License Plate Recognition (LPR) functionality.

(Business provides up to 32 CCTV cameras by default and additional cameras can be added in lots of 8)

Professional to Business Upgrade – 996901UPGB



Corporate Edition - 996901C

The Corporate Edition takes everything from Professional and Business and unlocks all other Integriti features. This includes advanced security applications for organizations requiring a high level of security and advanced on-site guarding features such as Advanced Alerts, Operator Challenge, Guard Tour and SNMP Health monitoring. In addition to these features Integriti Corporate allows unlimited CCTV & LPR connections.

Business to Corporate Upgrade – 996901UPGC



Express Edition - 996905

The Express edition is the entry-level software solution. With features such as User/Cardholder Management, Basic reporting and Forensic Audit trail, Express is designed for small sites with a single Integriti Controller and up to 16 doors of access control.



Professional Edition - 996901

Integriti Professional includes a powerful suite of tools and features that are standard as part of the base package.

Features include:



User/Cardholder Management

The incredibly flexible user permissions provide an easy-to-use, building block method of assigning access and security rights to cardholders. Cardholder profiles are easily created by assigning multiple permissions with simple "Allow" and "Deny" functions.



Data Importation

Import cardholder data from third-party systems.



Basic Reporting

Single-click reporting to review the areas cardholders have accessed, what areas cardholders have access to, search event and alarm history, programming history and much more. Easily export reports in a variety of common file formats.



System Health Monitoring

Monitor the health of both the Integriti hardware and software. Proactive notifications can alert security operators and security contractors if maintenance is required.



Schematic Maps

Rich graphics with interactive scalable vector based floor plans and maps. Effortlessly create maps using the built-in library of animated icons.



SkyTunnel Connectivity

SkyTunnel is an industry-first cloud-based service that provides hassle-free connectivity of Integriti hardware, software and mobile apps.



Security and Alarm Management

Complete alarm management with powerful automated actions.



Intuitive Design

The Integriti System Management Suite is a true cutting-edge solution. Integriti boasts a contemporary and intuitive design that is simple to use and easy to learn.



Operator Permissions

Manage the operators that use Integriti software. Easily customise and define their access permission levels with fine control.



System Designer and GateKeeper Applications

System Designer is used for all aspects of system programming and configuration. GateKeeper is a dedicated application to simplify day to day monitoring and control of the Integriti system.



Communicator - Email, SMS & Pager Communications

The Communicator feature allows messages to be sent from the Integriti server, either manually or automatically, using the various communication paths available.

- E-mails: Specify an SMTP mail server.
- SMS Text Messaging: Connect to Clickatell or Message Media commercial web-based SMS providers using a pre-opened account. These SMS providers will charge for their service and any associated costs are between the service provider and account holder.
- Pager: Connect to a pager server using the TAP over IP protocol.



Dynamic User Import Module (DUIM)

This feature allows for users created in another application, to be automatically imported into the Integriti software with a predefined set of permissions. It also provides for the automatic modification or deletion of users in the Integriti software if those users are modified or deleted in the other application. User data is easily imported via a CSV file transfer from the third-party system.



Audit Trail

The amazingly powerful forensic audit trail records every programming change made by all operators and provides the ability to "roll-back" to any change in the past.



Modern Client/Server Architecture

Integriti employs a client/server architecture and is fully compatible with the latest computing platforms and Microsoft SQL databases.



Flexible Workstation / Client Options

The Integriti Professional Edition includes an additional 2 client connections with flexible configurations options. Each client can be configured to be "Reserved" for a dedicated workstation, ensuring the Workstation is always available. Alternately Client connections can be "Reserved" for a particular Operator, this ensures the Operator is always able to login regardless of which workstation they are working from. Clients can also be configured to be "Floating"; this allows the client software to be installed on many workstations with up to 2 of them being connected concurrently. Client connections can easily be switched between Floating/Reserved by the system administrator at any time.



Smartphone-Server Interface

The Smartphone-Server Interface allows Apple or Android devices using the Integriti Mobile App to connect to an Integriti Server. This provides a global perspective of the entire security system, particularly useful in managing multi-controller installations from a mobile device.



PhotolD Card Design

The PhotolD feature allows the customised designing and printing of PhotolD access cards. PhotolD printing will also require the use of a compatible third-party card printer (supplied by others).



Unlimited Controller Connections

Integriti Professional allows an unlimited number of Integriti Security Controllers (ISC) and Integriti Access Controllers (IAC) to be connected and centrally managed as one complete system. This allows organizations to expand the security system as needed, either across one location or extended across many geographically disbursed locations.

**Business Edition - 996901B**

Integriti Business is designed for Medium to Large Businesses, providing additional functionality for every day site security management.

(All functions & features of the Professional Edition are included in the Business Edition)

Features include:**Advanced Reports**

While the base package of Integriti Professional includes some basic reporting functionality, the Advanced Reports feature enables customers to generate highly flexible, more detailed, and graphical based reports. Many sample Advanced Reports come standard, such as Time on Site, Muster, User Access History and much more. For the technically minded, these sample reports can be used as templates to customise and generate other reports according to the needs of the customer. Alternatively, Inner Range offers a professional report writing service with quoted prices varying according to the complexity of the client's requirements.

**CCTV Integration & License Plate Recognition (LPR) - Initial 32 Cameras**

The CCTV Integration function allows various CCTV & License Plate Recognition (LPR) systems to be integrated into Integriti software and is enabled on a per camera basis. The Integriti Business Edition allows integration of up to 32 cameras, irrespective of the CCTV brand chosen. (extra Cameras can be added in lots of 8 - Part 996921) Please see Inner Range website for a list of compatible CCTV vendors and their respective integration capabilities.



Flexible Workstation / Client Options

The Integriti Business Edition includes an additional 5 client connections with flexible configurations options. Each client can be configured to be "Reserved" for a dedicated workstation, ensuring the Workstation is always available. Alternately Client connections can be "Reserved" for a particular Operator, this ensures the Operator is always able to login regardless of which workstation they are working from. Clients can also be configured to be "Floating"; this allows the client software to be installed on many workstations with up to 5 of them being connected concurrently. Client connections can easily be switched between Floating/Reserved by the system administrator at any time. *(Concurrent Client / Workstation connections are shared with Web Server sessions)*



Web Server Clients

The Web client is a mobile friendly responsive interface which provides access to the Integriti server using a standard web browser on desktop or mobile devices. Up to 5 concurrent Web login sessions are available with the Integriti Business Edition. *(Concurrent Web Server sessions are shared with Client / Workstation connections)*



Active Directory Integration (Operators)

This feature enables Active Directory operator integration for Single Sign-On (SSO). Integriti operators are not required to enter an Integriti login username and password as their credentials will be validated with Active Directory based on their Windows login. The Single Sign-On authentication delivers fast and efficient use of the Integriti application. As a further benefit, Active Directory can provide comprehensive password management, including adherence to any global password policies that may have been deployed by the organisation.



Active Directory Integration (Users)

Active Directory Integration for Users allows the synchronisation of Users in the Integriti software with the same Users in Windows Active Directory. New Users and changes to Users in the Active Directory database are pushed down into the Integriti database in accordance with mapping tables pre-configured using an import configuration tool in the Integriti software. The integration is also bi-directional such that user changes made in the Integriti software can be written back to Active Directory. This effectively means that Users need only be entered into one system, therefore reducing operational and training costs, saving time, and improving data consistency.



**Corporate Edition - 996901C**

Integriti Corporate is designed for Large to Enterprise scale organisations and provides advanced security management features

(All functions & features of the Professional and Business Editions are included in the Corporate Edition)

Features include:

**Advanced Alerts - Alarm Escalation, Response Plans & Operator Challenge**

Advanced Alerts is intended for use by on-site guards and security managers. It allows a framework within the Integriti software to escalate designated alarms to specific operators and tailor and implement response plans for specific situations. It also enables operator challenge by guards in response to photo pop up on an access event as well as an assortment of other alarm management functionality.

**User Qualification Manager**

User Qualification Manager is intended to facilitate the implementation of various WHS criteria by enforcing the currency and renewal of user specific qualifications and permits before access to designated areas will be allowed by the system. Both time-based and credit-based qualifications are supported.

**Guard Tour Manager**

The Guard Tour Manager is a configurable framework where guard tours can be created, scheduled and monitored in real time. The application offers a high amount of flexibility in the creation of steps, tasks, actions and warnings for each tour. Progress of guard tours can be monitored in real time via Integriti's graphical map interface and via live video feeds from an integrated CCTV system. Warnings and alarms can also be raised where the timing or the expected sequence of events within a tour has not been met. Reports can also be generated providing full detail of active and completed tours.



Flexible Workstation / Client Options

The Integriti Corporate Edition includes an additional 30 client connections with flexible configurations options. Each client can be configured to be "Reserved" for a dedicated workstation, ensuring the Workstation is always available. Alternately Client connections can be "Reserved" for a particular Operator, this ensures the Operator is always able to login regardless of which workstation they are working from. Clients can also be configured to be "Floating"; this allows the client software to be installed on many workstations with up to 30 of them being connected concurrently. Client connections can easily be switched between Floating/Reserved by the system administrator at any time. *(Concurrent Client / Workstation connections are shared with Web Server sessions)*



Web Server Clients

The Web client is a mobile friendly responsive interface which provides access to the Integriti server using a standard web browser on desktop or mobile devices. Up to 30 concurrent Web login sessions are available with the Integriti Corporate Edition. *(Concurrent Web Server sessions are shared with Client / Workstation connections)*



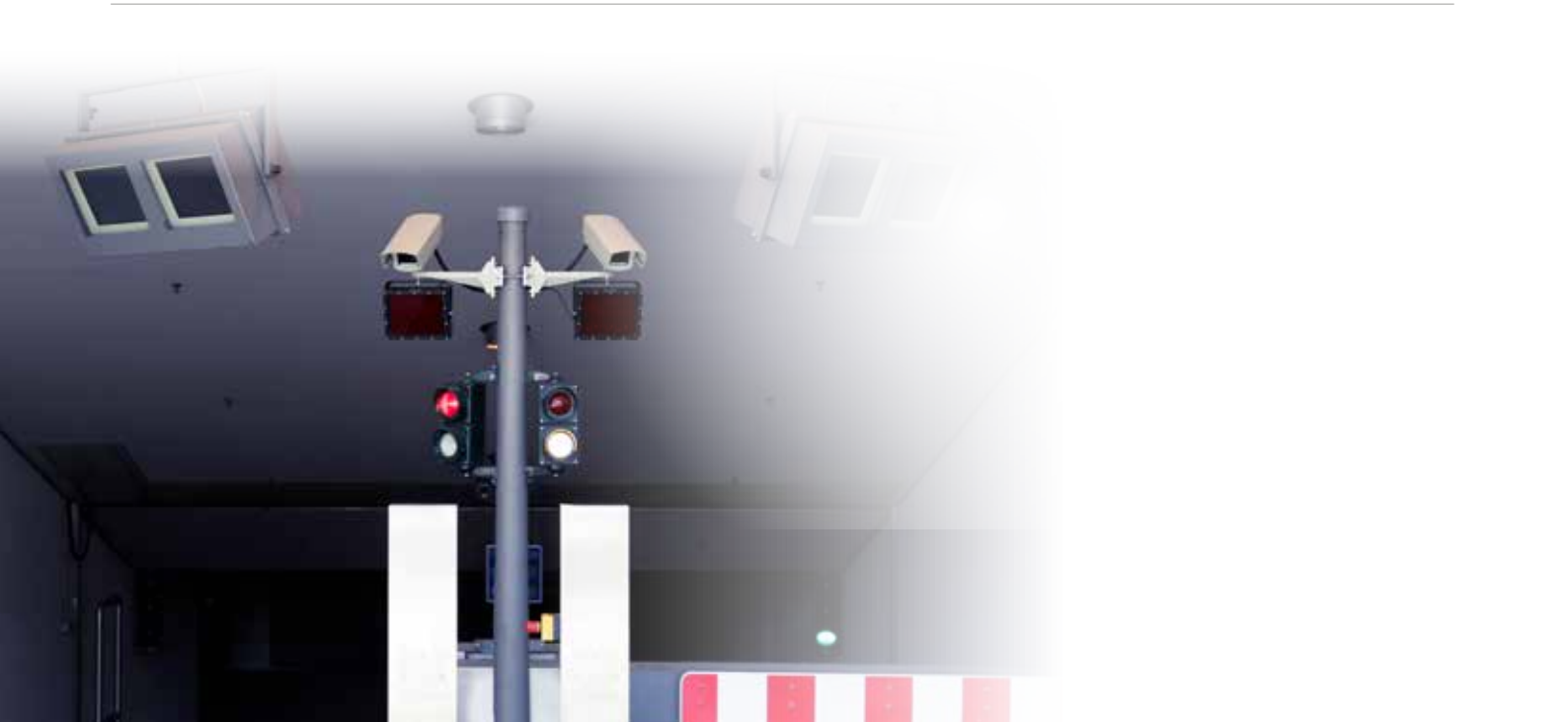
CCTV Integration & License Plate Recognition (LPR) - Unlimited Cameras

The CCTV Integration function allows various CCTV & License Plate Recognition (LPR) systems to be integrated into Integriti software. The Integriti Corporate Edition allows unlimited cameras, irrespective of the CCTV brand chosen. Please see Inner Range website for a list of compatible CCTV vendors and their respective integration capabilities.



SNMP & System Health Monitor

The SNMP & System Health Monitor is designed to alert IT administrators to several critical runtime errors that may occur with Integriti or associated SQL server instances. The application provides support for SNMP servers and allows various aspects of the following Integriti functions to be monitored: Active Directory Service, Database, Inner Range IP - Server - Controller communications (IRIP), Reports, Remote Procedure Call (RPC), Scheduler, and Server Services. The SNMP interface is bi-directional, allowing Integriti to generate SNMP traps (alarms) to be received by an SNMP manager or conversely, SNMP traps from third party systems can be sent to Integriti to be processed by Integriti's powerful alarm management sub-system.



The expansion options and features listed below are available for Professional, Business and Corporate Editions and allow the system to be expanded to the customer's requirements.



Integriti Door License - 996940

The base packages of Integriti Professional, Business and Corporate include the connection of the first 16 Doors. Additional Door licenses are required (per door), where more than 16 Doors are needed. The Integriti server totals the number Doors across all Controllers that are connected to the server.



Integriti CCTV Extra 8 Cameras - 996921 (Integriti Business Edition Only)

The Integriti Business Edition allows integration of up to 32 cameras as standard. This expansion option allows additional Cameras to be added in lots of 8. Please see the Inner Range website for a list of compatible CCTV vendors and their respective integration capabilities.



Partitioned Systems - 996915

In an Integriti system Users (and other global entities) are synchronised across all of the hardware Controllers within the system. Partitioning the system allows for entities to exist solely within the partition they were created. Site Partitions can contain multiple Integriti Controllers (ISC) & (IAC) and are entirely isolated from each other while still being managed from a single Integriti Server. For example, each Partition can have its own local 'User 1' - and Card and PIN uniqueness is only enforced within a partition. (One 996915 Partition license is required per-partition)



Mimic Viewer - 996906

Mimic Viewer is a software-based mimic panel which is intended to work independently of other Integriti software editions. As a stand-alone installation Mimic Viewer is configured to connect directly to an Integriti Security Controller (ISC) or Integriti Access Controller (IAC). Mimic Viewer receives real time status and events directly from the Controller, and displays the status of these events dynamically on graphical maps providing an easy to see representation of alarms and system events to security personnel. (A Professional, Business or Corporate Edition is required for initial setup)



Inner Range Mobile Reader Application - 996907

The Inner Range Mobile Reader application is an Android smart-phone app that allows security personnel to visually view and verify cardholder details with a simple scan of a user's access card. The Mobile Reader can be used for on-the-spot identity verification, suspension of access rights and as a "check-in" reader for emergency mustering assembly points. (See page 21 for full details)



Optional Integrations

Optional integration features are available for Integrity Professional, Business or Corporate editions to provide high level communications interfaces between Integrity Software and various third-party products and systems.



3rd Party Door License - 996941

This licence allows the synchronisation of users and access permissions between the Integrity system and third-party door systems. The Integrity server provides the head-end control for both systems allowing a single point of administration for all events, users, and doors, including traditional hardwired doors and wireless locking devices on the third-party system. Third-party doors are licensed on a per door basis.



Mobile Credentials Management Integration - 996964

The Mobile Credential Integration allows Integrity Software to connect to a Mobile Credential provider. This allows Integrity software Operators to allocate and manage Mobile Credentials from within the Integrity User editor. Please see the Inner Range website for a list of compatible Mobile Credential providers.



Event Review I/O Communications - 996931

This software module is in effect a TCP/IP or serial based bi-directional gateway to other systems. This licence allows the Integrity software to send a selected subset of Integrity event data to third party applications. It also allows the Integrity software to receive, process and action event data received from third party systems. The mechanism for this transaction is via an ASCII based text stream.



Locker/Key Locker Integration - 996934

This licence enables a bi-directional integration with various Locker/Key Locker systems. The integration facilitates user database synchronisation between Integrity and the Locker system as well as receiving alarms from the Locker system to leverage Integrity's powerful alarm management capabilities. See the Inner Range website for a full list of integrated Locker / Key Locker systems.



Intercom Integration - 996932

Intercom integration allows operators to manage intercom calls through Integrity software. Calls may be answered, forwarded, initiated and closed, to name just a few. Calls appear within the dedicated Intercom Call Queue display in Integrity as well as allowing intercoms to be placed on Integrity maps for ease of control. See the Inner Range website for a list of compatible Intercoms and their capabilities.

Optional Integrations



Modbus Slave Integration - 996968

The Integriti Modbus TCP Slave service allows certain states of Doors, Inputs, Auxiliaries, and Areas in the Integriti system to be read and written by sending messages from an external "Master" device that supports the Modbus protocol. The service supports mapping Integriti state and control points to Modbus Discrete Inputs and Coils (1-bit data types) respectively. For more detailed information about Modbus – Integriti Integration please refer to the Technical Guide on the Inner Range website (Modbus Input Registers and Holding Registers, 16-bit data types, are not currently supported or implemented)



Visitor Management Integration - 996935

This licence allows a Visitor Management system to push user/visitor information into the Integriti database. The Visitor Management system, therefore, can be the single front-end interface for enrolling visitors with no need to use the Integriti software for such tasks. User/visitor information can include the name, PIN number, card number, access permissions and a variety of other fields. See the Inner Range website for a full list of integrated Visitor Management Systems.



Biometric Management Integration - 996969

Integration between Integriti Software and Biometric reader management systems allows data such as user names and access permissions to be communicated from Integriti to the Biometric system software. Please see the Inner Range website for a full list of available integrations.



Biometric Export Licence for Morpho Manager Software - 996936

For specific Integration between Integriti Software and MorphoManager software by IDEMIA. For more information on MorphoManager please visit the IDEMIA website: <https://www.idemia.com/morphomanager>

Enterprise Optional Features

The following optional features deliver enterprise level functionality. Some of these features may be more complex to specify or deploy. It is, therefore, Inner Range's recommendation that security professionals consult with the Inner Range sales or support team to assist with the sales or deployment process.



Elevator Management Integration (Lift HLI) - 996933

This licence is required to facilitate a high-level interface between the Integriti server and the Lift server. This interface provides a specific set of functionalities depending on the Lift system and consultation with the Inner Range pre-sales team is therefore required. Inner Range offers high-level lift integration to various vendors other than Schindler however these integrations are enabled in the Integriti hardware controllers with the use of smart card licences. Please consult with the Inner Range pre-sales team for any high-level lift inquiries. Also see page 28 of the Product Catalogue for other lift vendors.



Additional Server Node - HA / Load Spreading - 996965

The Additional Server Node License allows multiple Integriti servers to be deployed and cryptographically paired to a single Integriti Database. Integriti client workstations and controllers can connect to any available Integriti server within the network, allowing for load spreading of larger systems or a high availability solution for the minimisation of potential system downtime and data loss. This solution allows for multiple servers within one location or split-site deployments where off-site disaster recovery solutions are required. It can also be used in conjunction with Microsoft Windows Server Failover Clustering (WSFC) and Microsoft SQL database clustering to create an entirely fault tolerant enterprise level high availability solution.



Milestone Access Control Manager (ACM) Integration - 996939

Integriti's high-level interface with Milestone's ACM is IP-based and bi-directional. ACM integration allows Milestone to be the single master "head end" security management platform, whereby Integriti functions as an access control and security sub-system. Cardholder information, alarms, and events, as well as door and area statuses in Integriti, are sent in real-time to Milestone. Operators are therefore empowered to effectively manage their security operation by seamlessly monitoring Integriti alarm and access points through Milestone. Operators may also unlock/lock doors and control areas with the added ability to associate doors and areas to cameras in Milestone, thus facilitating efficient situational awareness and immediate visual verification of alarms.



Real-Time Location System (RTLS) Integration - 996928

The RTLS integration allows the Integriti server to integrate with several RTLS providers. Locations of users and assets can be displayed within Integriti Schematic Maps or using Area and User filters. Alarm and Event information can be received and displayed in Integriti Review and Integriti can process the information in its automation and alarm management infrastructure. Please see Inner Range website for a list of compatible Real-Time Location Systems and their respective integration capabilities.



Active User Rotation (AURM) - 996956

This licence is used when there are more users in the software than the 100,000 that can be accommodated in the hardware Controllers. If this licence is deployed and a user presents their card to any reader in the system, but that user record cannot be found in the database of the local Controller, the Controller will interrogate the Integriti server to see if the user exists in the software database. If the user is valid in the software database, then access is granted immediately, and that user and their permissions are downloaded to that specific Controller overwriting the oldest user in that Controller.



VingCard Integration - VingCard as Master - 996937

VingCard is a system often deployed to provide access control for guests checking into rooms in hotels or apartment complexes. In facilities such as these, the Integriti system is also deployed to provide real-time monitored access control for the base building elements such as elevators, staff doors, service doors and car parks. Integration between VingCard and Integriti allows user card data to be sent from VingCard to Integriti, allowing guest or tenant access to doors managed by Integriti (such as lifts, perimeter doors, etc.)



XML API Integration

An XML licence is a mechanism which allows a third-party software writer to create a software product which can access the database of the Integriti software directly. This is done through a controlled XML/REST portal in the Integriti software designed specifically for this purpose. XML (Extensible Markup Language) is an IT industry standard language/protocol for the transmission of data between software applications.

XML licences can only be purchased after a Technology Partner Agreement has been executed by Inner Range and the potential developer. An application to become a Technology Partner with Inner Range can be made using the appropriate application form and requires a binding disclosure of the scope and purpose of the integration. Any XML interface licence issued can only be utilised for the purpose defined in the partner agreement.

XML Interface - READ - 996950 | XML Interface - WRITE - 996951 | XML Interface - CONTROL - 996952



Enterprise Optional Features



Inner Range Mobile Reader Application - 996907

The Inner Range Mobile Reader is an Android smartphone application that allows security personnel to view and verify cardholder details with a simple scan of a user's access card. Mobile Reader can be used for on-the-spot identity verification, suspension of access cards and as a "check-in" reader at emergency mustering assembly points.

Mobile Reader Main Features

- **User Identification & Location Check:** On presentation of a valid card, Mobile Reader displays the user photo, user location, card status and additional user and card information. The information displayed can be configured from the Integriti server to include any user properties, card properties and custom fields such as Employee ID, Student ID, and Department. Mobile Reader can be set to the specific location or area where the smartphone is located. When user information is displayed, the user's location will be displayed in red if it does not match the device location. This allows security personnel to identify users that may have entered areas without authorisation.
- **Suspending Cards:** If a user doesn't match the cardholder photo, security personnel can immediately suspend the card from the Mobile Reader application. The suspended card will no longer provide access to any doors until reactivated from the Integriti server.
- **Emergency Muster:** In the event of an emergency, Mobile Reader can be used as a "check-in" reader at an emergency mustering assembly point. The operator can select a muster point location and areas that are being evacuated. Multiple smartphones running Mobile Reader can be used collaboratively during an emergency evacuation. As users present their cards at the "check-in" reader, their location is updated to the muster point. In muster mode, the app displays the number of users still inside the evacuation areas, the number of users at the muster point and the total number of users at all muster points. Mobile Reader provides a scrollable list of all users still inside an area or building as well as their last known location. Additionally, an operator can search for users by name to quickly determine their last known location. Access to this critical information provides emergency services with accurate information for a focused and timely response.



User Verification Features

- Display user photo, user location, card status and additional user and card information
- Display user and card custom fields
- Verify user location against device location
- Suspend user access cards

Muster Features

- Functions as a "check-in" reader at emergency mustering assembly points
- Supports multi-device coordinated mustering
- Selectable muster location
- Selectable evacuation areas and locations
- Dynamically displays the number of users still inside the evacuation areas, the number of users at the muster point and the total number of users at all muster points
- Scrollable list of users still inside the evacuation areas and their last known location
- User name search

Application Features

- Supports username and password login or biometric fingerprint login
- Displayed user and card information is configurable from the Integriti server
- Areas and locations can be grouped into Location Lists for site-wide mustering

Requirements

- Integriti Professional V18.1 or newer
- Android V7.0 Nougat or newer
- Smartphone with NFC capabilities
- Supports Inner Range SIFER and HID MIFARE DESFire© EV1 & EV2 cards.**
- Inner Range Mobile Reader – 996907 is licenced per mobile device connected to the Integriti server. Connected devices can be managed, activated or deactivated from the Integriti server.

**Requires SIFER Enrollment Station to identify card serial numbers of SIFER credentials.

Ordering Options

996907
Inner Range Mobile Reader Application
(one required per smartphone)





Express Edition - 996905

Integriti Express is a budget focused software solution for Small and Medium Business's (SMBs). Express is a great option for sites that do not need the advanced features of the Professional version. The following base level parameters are included with the Integriti Express Product Key:

1. Connection of one Client Workstation where the client workstation and server are the same machine
2. Connection of one Integriti Controller (ISC or IAC)
3. Support for up to 16 Doors



Some of the features included with Integriti Express:



User/Cardholder Management

The incredibly flexible user permissions provide an easy-to-use, building block method of assigning access and security rights to cardholders. Cardholder profiles are easily created by assigning multiple permissions with simple "Allow" and "Deny" functions.



System Health Monitoring

Monitor the health of both the Integriti hardware and software. Proactive notifications can alert security operators and security contractors if maintenance is required.



Basic Reporting

Single-click reporting to review the areas cardholders have accessed, what areas cardholders have access to, search event and alarm history, programming history and much more. Easily export reports in a variety of common file formats.



SkyTunnel Connectivity

SkyTunnel is an industry-first cloud-based service that provides hassle-free connectivity of Integriti hardware, software and mobile apps.



System Designer and GateKeeper Applications

System Designer is used for all aspects of system programming and configuration. GateKeeper is a dedicated application to simplify day to day monitoring and control of the Integriti system.



Intuitive Design

The Integriti System Management Suite is a true cutting-edge solution. Integriti boasts a contemporary and intuitive design that is simple to use and easy to learn.



Operator Permissions

Manage the operators that use Integriti software. Easily customise and define their access permissions levels with fine control.



Upgrade to Integriti Professional - 996905UPG

Express can be upgraded to Integriti Professional at any time.



Audit Trail

The amazingly powerful forensic audit trail records every programming change made by all operators and provides the ability to "roll-back" to any change in the past.

Express software provides one connection to an Integriti Controller supporting up to 16 doors and can be used only on a single computer workstation. Express offers all the essential functionality required to configure, administer and monitor a single Integriti system. Full operator permissions are provided for added security and Integriti Express can be upgraded to Professional if and when further expansion is required.

Commissioning Software

Integriti Commissioning Software (CS) is a software application designed to be used by installation technicians when they are installing and commissioning Integriti Controllers.

CS can be used to bench program Controllers prior to deployment and to train and familiarise technicians with general Integriti programming techniques.

The Integriti CS application is available as a yearly expiring licence to approved technicians only. This approval is usually granted after appropriate factory accreditation has been undertaken successfully and a level of competency with the Integriti platform has been certified by the Inner Range training department.



Integriti Software Comparison

Features	CS	Express	Pro	Business	Corporate
User Management, System Programming, System Status, Programming History (Audit Trail)	✓	✓	✓	✓	✓
Hassle Free IP Connection with SkyTunnel. a.	✓	✓	✓	✓	✓
Software Operator Permissions	✗	✓	✓	✓	✓
GateKeeper – A Dedicated Application for Daily End User Operations	✗	✓	✓	✓	✓
Additional Workstations / Clients (Floating or Fixed)	✗	✗	✓(2)	✓ (5)	✓ (30)
Support for Multiple Controllers	✗	✗	✓	✓	✓
Schematic Graphical Maps with Scalable Vector based graphics	✗	✗	✓	✓	✓
Alarm Management	✗	✗	✓	✓	✓
Smartphone-Server Interface	✗	✗	✓	✓	✓
Communicator - Email, SMS & Pager	✗	✗	✓	✓	✓
Photo ID Card Design	✗	✗	✓	✓	✓
Dynamic User Import Module (DUIM)	✗	✗	✓	✓	✓
Advanced Reports	✗	✗	✗	✓	✓
Web-based Client for Desktop or Mobile Devices (Responsive)	✗	✗	✗	✓	✓
CCTV Integration. b.	✗	✗	✗	✓ (32)	✓ (Unlimited)
CCTV Licence Plate Recognition Integration	✗	✗	✗	✓	✓
Active Directory Integration - Operators	✗	✗	✗	✓	✓
Active Directory Integration - Users	✗	✗	✗	✓	✓
User Qualifications Manager	✗	✗	✗	✗	✓
Advanced Alarm Management, Alarm Escalation, Response Plans & Operator Challenge. c.	✗	✗	✗	✗	✓
SNMP & Health Monitor	✗	✗	✗	✗	✓
Guard Tour Manager	✗	✗	✗	✗	✓
3rd Party Door Integration	✗	✗	Optional	Optional	Optional
Event Review I/O Communications	✗	✗	Optional	Optional	Optional
Milestone XProtect Access ACM Integration	✗	✗	Optional	Optional	Optional
Mobile Credential Management Integration	✗	✗	Optional	Optional	Optional
Modbus BMS Integration	✗	✗	Optional	Optional	Optional
KeyLocker / Locker Integration	✗	✗	Optional	Optional	Optional
Elevator Management Integration (Lift HLI)	✗	✗	Optional	Optional	Optional
Additional Server Node - HA / Load Spreading	✗	✗	Optional	Optional	Optional
Inner Range Mobile Reader Application	✗	✗	Optional	Optional	Optional
Biometric Management Integration	✗	✗	Optional	Optional	Optional
Intercom Integration	✗	✗	Optional	Optional	Optional
Visitor Management Integration	✗	✗	Optional	Optional	Optional
VingCard Integration	✗	✗	Optional	Optional	Optional
RightCrowd Enterprise Integration	✗	✗	Optional	Optional	Optional
Real-Time Location System (RTLS) Integration	✗	✗	Optional	Optional	Optional
Active User Rotation Module (AURM)	✗	✗	Optional	Optional	Optional
XML Integration (Technology Partner Program)	✗	✗	Optional	Optional	Optional

Software Dimensions	CS	Express	Pro	Business	Corporate
Number of Controllers Supported. d.	No Limit	1	No Limit	No Limit	No Limit
Number of Simultaneous Controller Connections. d.	1	1	No Limit	No Limit	No Limit
Number of Doors Supported	250	16	16 ~ No Limit	16 ~ No Limit	16 ~ No Limit
Permitted Software Use	Installer Only	End User	End User	End User	End User

a. - SkyTunnel provides non-permanent connections between Integriti Controllers, Integriti software and the Integriti Mobile App.

b. - Business Edition includes 32 Cameras, which can be expanded further.

c. - Basic alert functionality is included as standard with the Professional & Business Editions. However, advanced alert functions such as Response Plans, Alert Escalations, Alert Reporting and Operator Challenge requires the Corporate Edition.

d. - Depending on the size and activity level of the system multiple servers may be required to support extremely large numbers of Controllers.