

# Milestone Systems Custom Development EMEA

---

## XProtect® View Layout Builder 3.0

---

Getting started Guide

# Table of Content

---

Target Audience	3
Copyright, trademarks and disclaimer	4
General Description	5
Installation	6
Prerequisites	6
Installation Procedure	6
Licensing	7
Configuration	9
View Layout Configuration	9
Configuration Reports	12

---

## Target Audience

This document is aimed at system users and provides descriptions on how to install, configure and maintain the XProtect® View Layout Builder 3.0 Integration. The solution is developed as a XProtect® Management Client plug-in which provides the ability to create new Smart Client View.

The manual only covers the necessary configuration steps in the XProtect® View Layout Builder.

To benefit from this document, you should have thorough knowledge of:

- Milestone XProtect® Video Management Software
- Milestone XProtect® Management Client
- Milestone XProtect® Smart Client

## Copyright, trademarks and disclaimer

Copyright © 2019 Milestone Systems A/S.

### Trademarks

XProtect is a registered trademark of Milestone Systems A/S.

Microsoft and Windows are registered trademarks of Microsoft Corporation. App Store is a service mark of Apple Inc. Android is a trademark of Google Inc.

All other trademarks mentioned in this document are trademarks of their respective owners.

### Disclaimer

This text is intended for general information purposes only, and due care has been taken in its preparation.

Any risk arising from the use of this information rests with the recipient, and nothing herein should be construed as constituting any kind of warranty.

Milestone Systems A/S reserves the right to adjust without prior notification.

All names of people and organizations used in the examples in this text are fictitious. Any resemblance to any actual organization or person, living or dead, is purely coincidental and unintended.

This product may make use of third-party software for which specific terms and conditions may apply. When that is the case, you can find more information in the file `3rd_party_software_terms_and_conditions.txt` located in your Milestone system installation folder.

## General Description

The Milestone XProtect® View Layout Builder enables the administrator to create custom Smart Client View Layouts that will automatically be available in the XProtect® Smart Client to use for generating new views.

## Installation

### Prerequisites

Before you start, make sure that the following is available:

- Milestone XProtect® video management software (such as Milestone XProtect® Corporate) along with an appropriate version of a Milestone XProtect® Smart Client. The solution is compatible with all Milestone C Code (Xprotect + products as well as advance products; Expert and Corporate). In fact, the solution is found to be compatible even with the free Milestone product, Essential+ but Essential+ cannot be licensed. Therefore, with free edition Essential+, it can only be used for trial purposes.
- **The solution is compatible with 2018 R2 or later.**

### Installation Procedure

The XProtect® View Layout Builder plug-in must be installed on the machine running the Milestone XProtect® video management software. On a system with multiple machines, the plug-in needs to be installed on the machines that runs Milestone XProtect® Management Client.

The following describes how to install the plug-in:

1. Install Milestone XProtect® View Layout Builder by running the following installer application:  
MilestoneViewLayoutBuilderInstaller\_x64.msi
2. When the installation wizard starts, click 'Next' to continue.
3. Click 'Next' to confirm the installation.
4. When the installation has completed, click 'Close'.

The Milestone XProtect® View Layout are typically installed in the following location;

C:\Program Files\Milestone\MIPPlugins\ViewLayoutBuilder

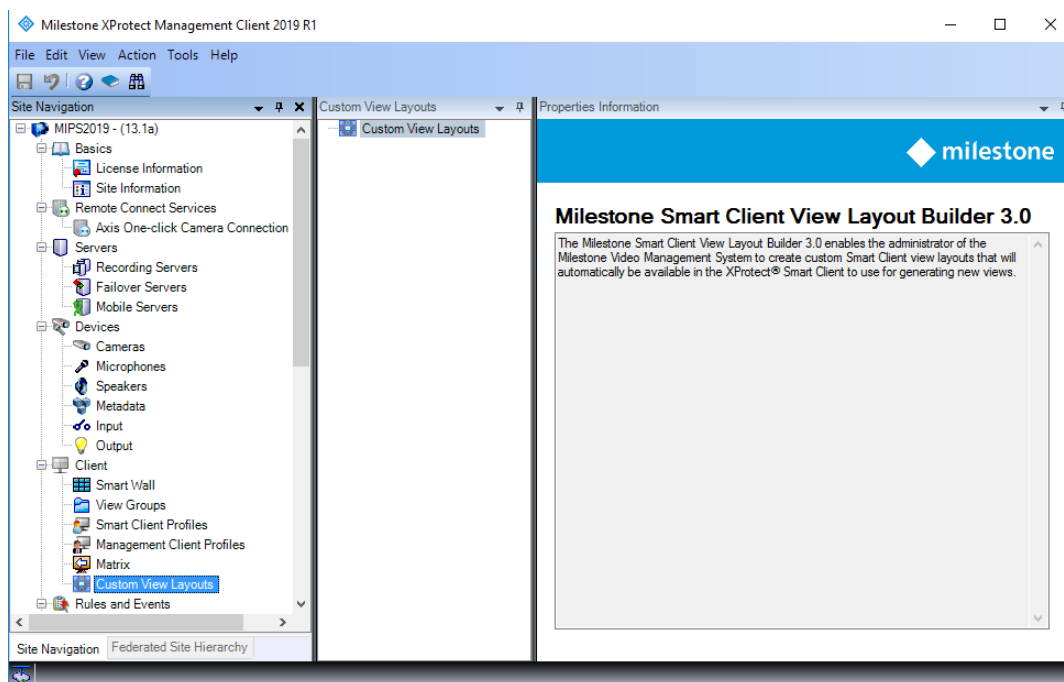


Figure 1: Xprotect Custom Layout Builder

Before doing any configuration of the plug-in, please read the Licensing section of this document.

## Licensing

The Milestone XProtect® View Layout Builder Integration plug-in requires a valid MIP licensing to work. The license is based on the SLC of the Milestone XProtect® video management software. Initially, a trial period of 30 days is automatically granted along with installation of the plug-in.

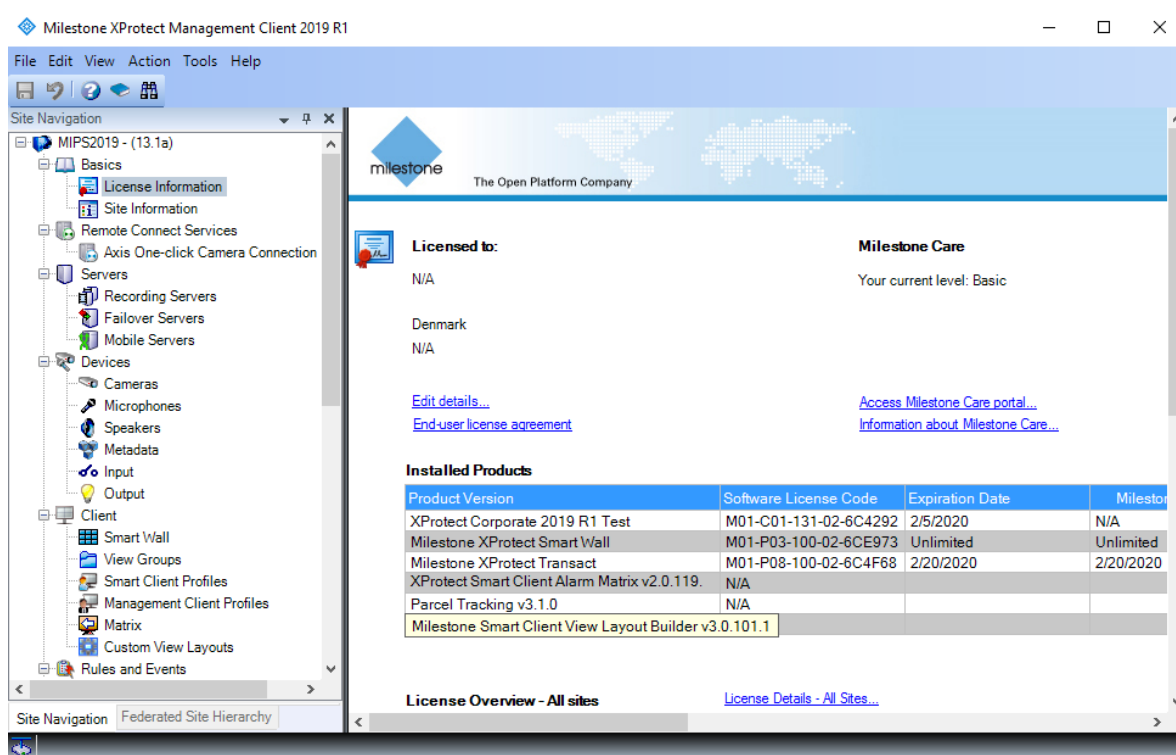


Figure 2: Milestone Licensing Page

That is, for testing purposes, anyone can install and immediately start testing XProtect® View Layout for the following 30 days.

**Please note that the product will have limited capabilities during the trial period.**

During the trial period the plug-in will provide full functionality with regards to the view Layout configuration, but during the trial period the view layout created will only show up to three rectangles (Smart Client View items) in the Smart Client. When the product has been licensed the existing configuration can be saved again to get access to the complete view layout in the XProtect® Smart Client.

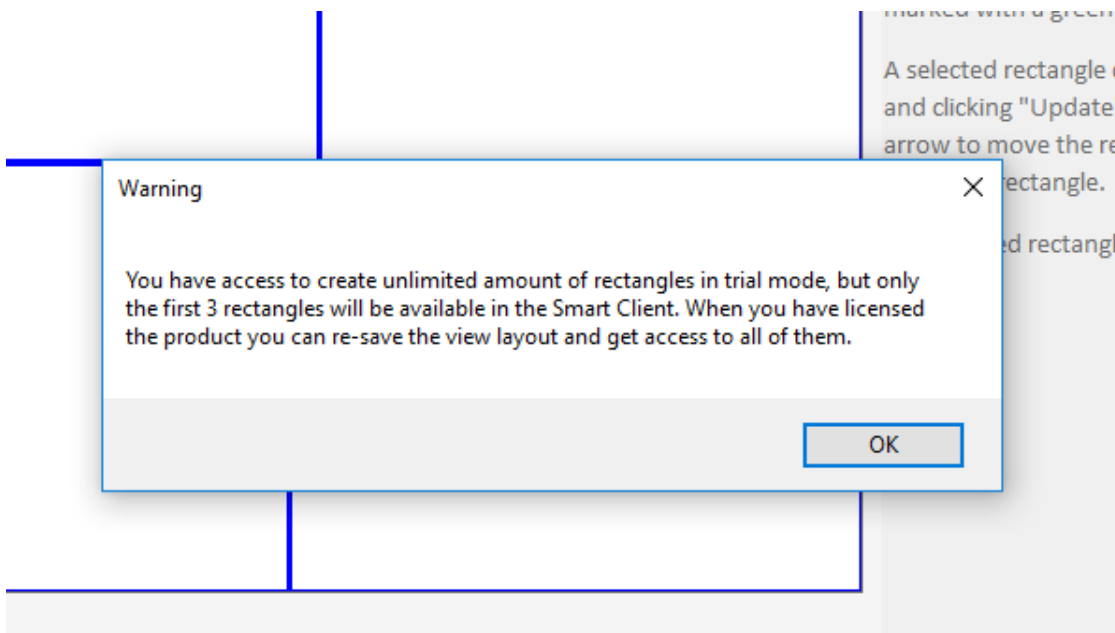


Figure 3: Trial Period Limitation

In addition to the above limitation, the solution will only allow the creation of five different Custom View Layouts during the trial period.

To obtain a permanent license; however, the distributor must know the SLC of the Video Management System (VMS) system on which the plug-in has been installed. Collect the SLC and send it to the distributor, preferably via email.

Once the license is added onto the SLC by Milestone Systems, the corresponding XProtect® VMS system must be re-activated for the license to take effect.



## Configuration

### View Layout Configuration

Upon completion of the installation, log in to XProtect® Management Client and locate the “Custom View Layouts” in the Site Navigation.

The plug-in tree view will display all the custom view layout configurations that has been made using this integration.

To create a new View Layout, right click on the “Custom View Layouts” top node in the plug-in tree view and select “Add New...”.

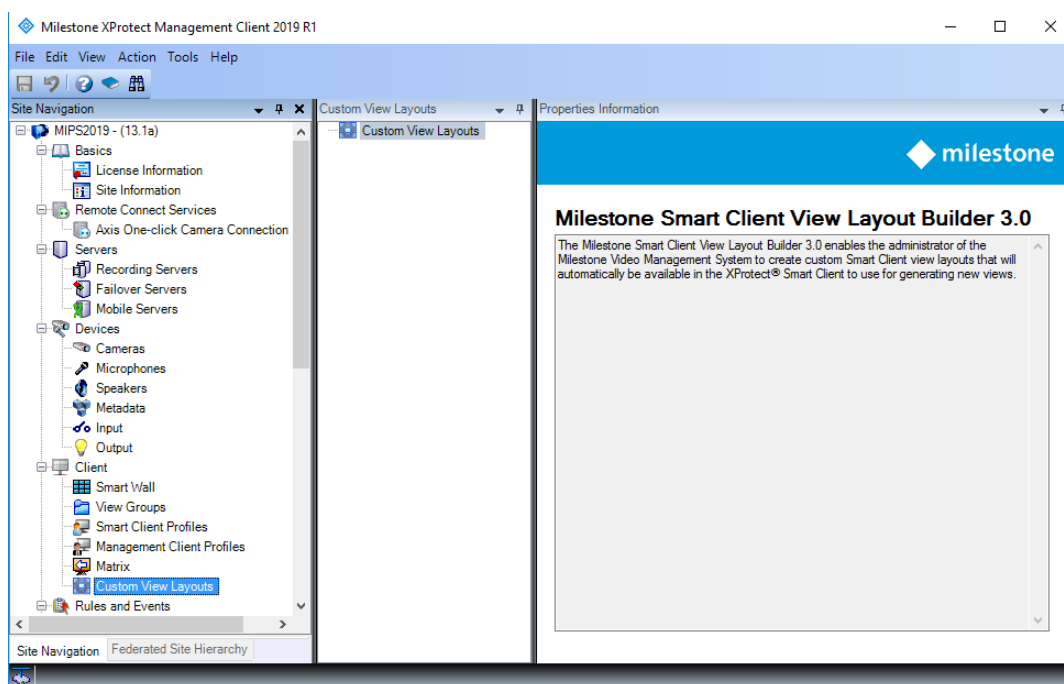


Figure 4: Creating a new View Layout

This will populate the “Properties Information” panel with detailed information about the new view layout.

### View Layout Information

The Name and Layout Group properties will be pre-configured to default values.

- Name:** The name of the view layout. The name has to be unique for all view layouts in the selected layout group. The name will be displayed in the plug-in tree view as well as when selecting the view layout in the XProtect Smart Client.
- Icon:** To assign an icon to the view layout click on the “Change” button and select an image file that should be used as icon. The View Layout Builder integration will automatically resize the image to the appropriate resolution.
- Layout Group:** The layout group in which the view Layout should be created. The layout group represents a collection of layouts that is optimized towards the specific group (i.e. 4:3 monitors). When selecting the view layout in the XProtect Smart Client the custom view layout will be represented in the layout group that has been configured in this property.

### **View Layout Designer**

The view layout designer contains the “Selected Rectangles”, “Current Rectangles” groups as well as a design area and an instructions text box.

A view layout contains a series of rectangles that each represents a location the Smart Client can populate with a Smart Client view item (i.e. a camera, carousel or hotspot).

The rectangles are created in the Design Area. When a rectangle is created is added to the “Current Rectangles” list and when it is selected it can be modified in the “Selected Rectangle” group. The instructions contain the following instructions to get a quick guide to working with the designer:

#### **Draw a new rectangle**

To create a new rectangle, place the mouse in the design area at the location for one of the corners of the rectangle you want to draw. Left click and hold the mouse button down while you drag the mouse pointer to the location of the diagonal corner of the rectangle you want to draw and release the mouse button to complete the draw operation.

#### **Modifying and deleting rectangles**

To modify or delete a rectangle you will need to select it first. This can be done by either right clicking inside the rectangle in the design area, or by selecting the rectangle in the "Current Rectangles" list. When a rectangle is selected the rectangle will be marked with a green color.

A selected rectangle can either be modified by updating the absolute position and size in the "Selected Rectangle" group box and clicking "Update" or by using the keyboard. Using the keyboard, the arrow keys can be used to move the rectangle (left arrow to move the rectangle left etc.) or a combination of shift+arrow key (shift+left arrow to decrease the width etc.) to resize the rectangle.

The selected rectangle can be deleted by pressing the delete or backspace key.

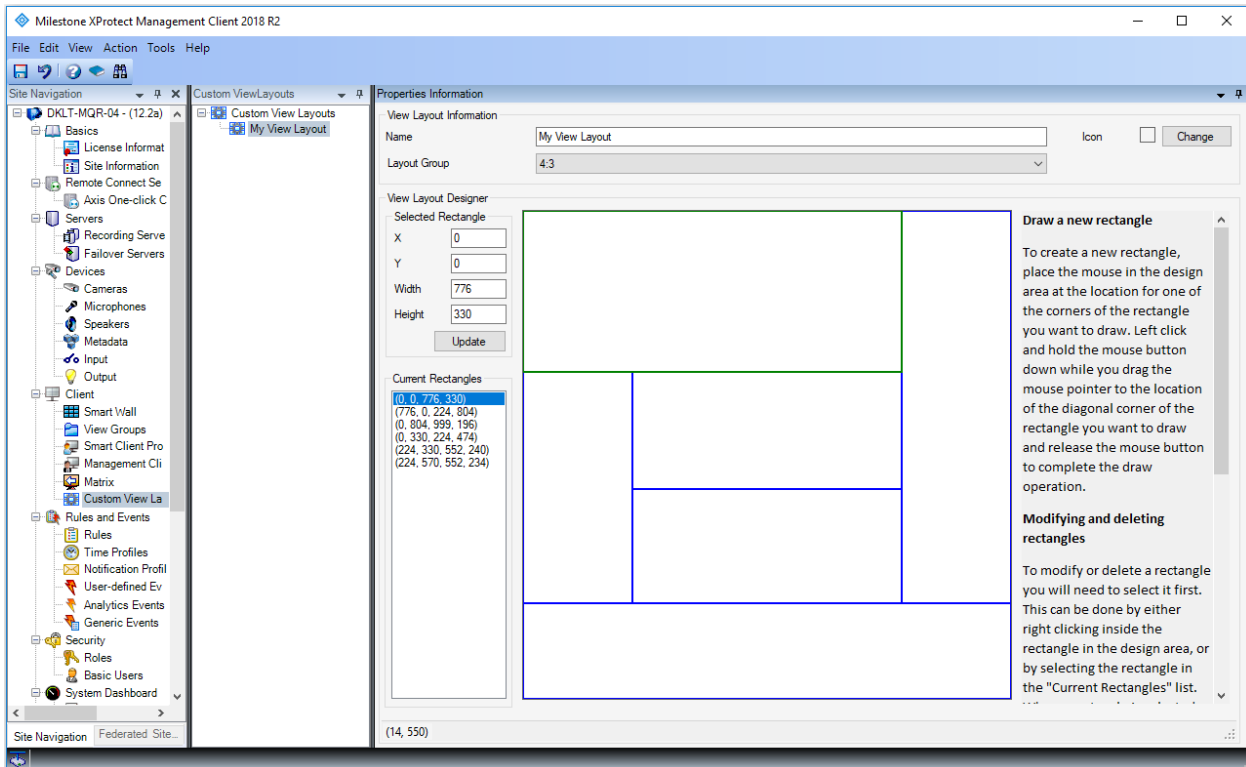


Figure 5: View Layout Configuration

When the custom view layout configuration is completed the view layout can be saved using the Management Client save capabilities (i.e. clicking on the Save icon or by using the CTRL+S shortcut).

To delete a view layout, right click on the “Custom View Layouts” top node in the plug-in tree view and select “Delete”.

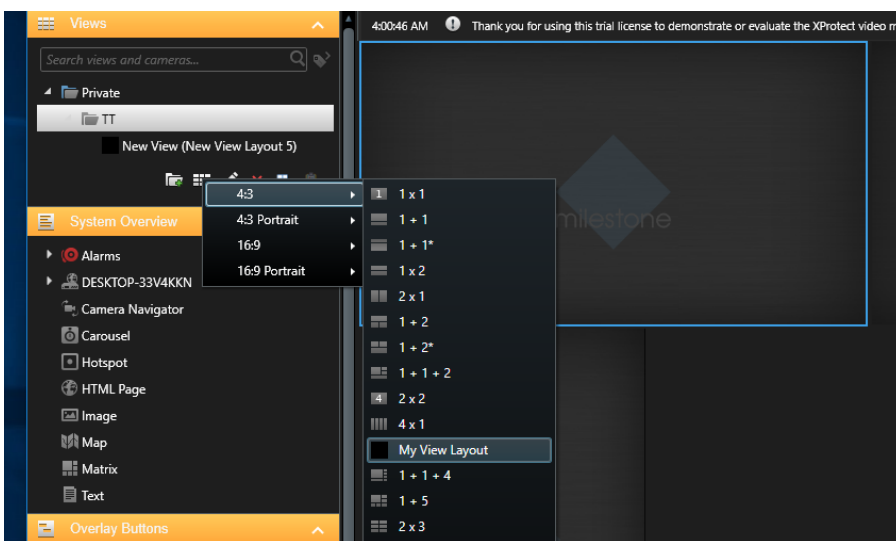


Figure 6: Custom View Layout located in Smart Client

After being saved in Management Client, a Custom Layout can be located in Smart Client as seen above.

## Configuration Reports

The View Layout Builder enables integration to Configuration Reporting which means that it is possible to export the custom view layouts as part of a configuration report.

To export the view layout builder configuration, select the “Configuration Reporting” node in the Site Navigation tree. Select the “Custom View Layouts” Reports that should be part of the finale configuration report and click “Export”.

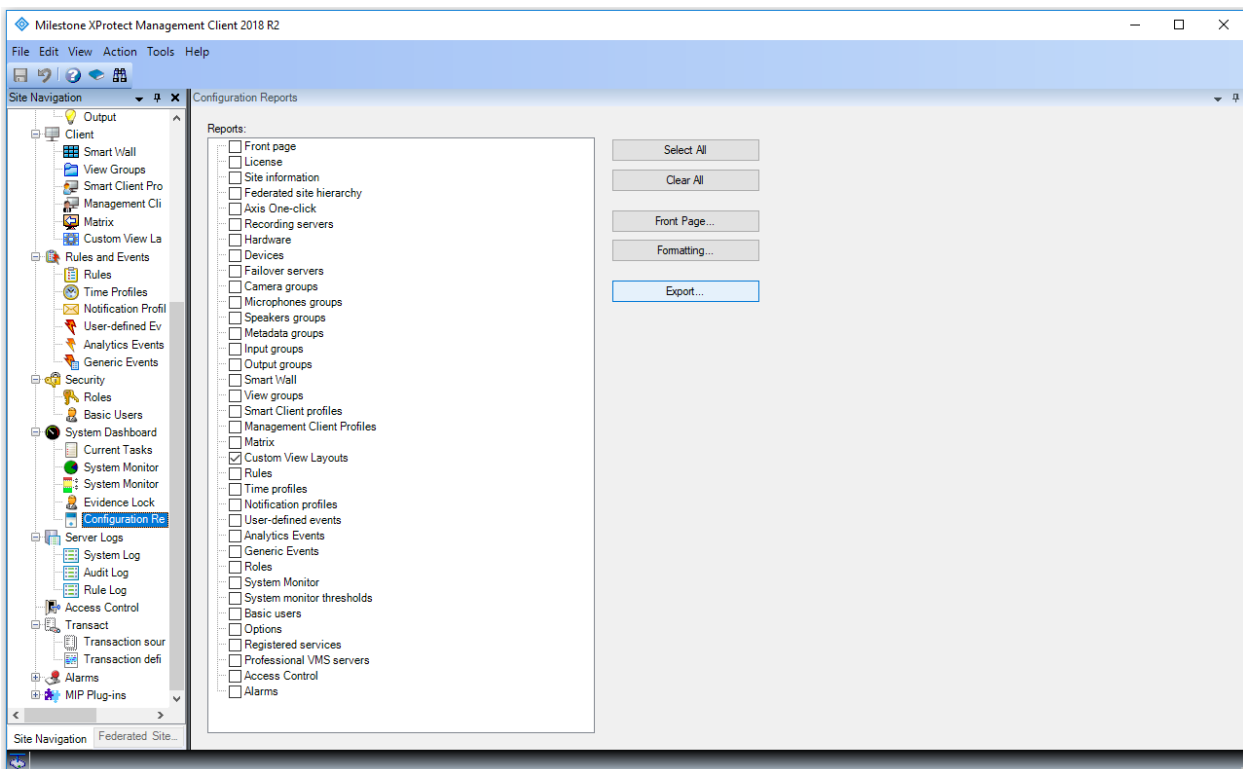


Figure 7: Creating a configuration report containing the Custom View Layout configuration. This will generate a pdf file containing all the selected Reports.

## Custom View Layouts

My View Layout	
<i>Name:</i>	My View Layout
<i>Layout Group:</i>	4:3
<i>Number Of Rectangles:</i>	6
<i>Rectangle[0]:</i>	(0, 0, 776, 330)
<i>Rectangle[1]:</i>	(776, 0, 224, 804)
<i>Rectangle[2]:</i>	(0, 804, 999, 196)
<i>Rectangle[3]:</i>	(0, 330, 224, 474)
<i>Rectangle[4]:</i>	(224, 330, 552, 240)
<i>Rectangle[5]:</i>	(224, 570, 552, 234)

Figure 8: Configuration report of the “My View Layout”.



Milestone Systems is a leading provider of open platform video management software; technology that helps the world see how to ensure safety, protect assets and increase business efficiency. Milestone enables an open platform community that drives collaboration and innovation in the development and use of network video technology, with reliable and scalable solutions that are proven in more than 150,000 sites worldwide. Founded in 1998, Milestone is a stand-alone company in the Canon Group.