

# Z-MAX® 6A Shielded Modular Cords

## - International

Combining the unparalleled performance of an exclusive PCB-based plug, noise-resistant shielded construction and a host of innovative user friendly features, the shielded Z-MAX 6A modular cords are the ultimate Category 6A cord. All cords are 100% factory-tested to ensure performance and compliance.



Siemon's **PowerGUARD** technology with a 75°C operating temperature improves heat dissipation for reduced length derating and bundling requirements in remote powering applications, including PoE and power over HDBaseT (POH).

**Low Profile Boot Design**  
Optimises side-stackability of patch cords and allows use in even the most dense patching environments

**High Performance Cable**  
Patch cords feature Category 7 S/FTP stranded cable for optimal transmission performance while eliminating alien cross-talk

**Integrated PCB**  
PCB equipped Smart Plug optimises signal tuning for exceptional transmission

**Fixed Front Contacts**  
Ensure proper mating with outlets to eliminate the performance variability of traditional crimp-style terminations

**Superior Performance Consistency**  
Rear contacts maintain cable twist to point of termination and provide robust strain relief. Solderless, press-fit contact technology ensures long-term reliability

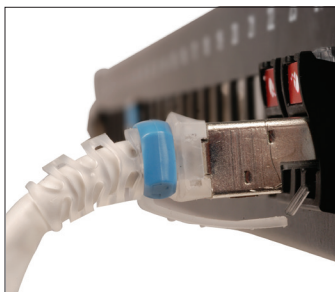
**Cantilevered Latch**  
Allows latch activation from further back on the boot for superior accessibility in high density environments

### STANDARDS COMPLIANCE

- ISO/IEC 11801-1 Ed 1.0
- ANSI/TIA-568.2-D
- ANSI/TIA-968-B
- ANSI/TIA-1096-A
- IEC 60603-7, 60603-7-51
- LSOH: IEC 60332-3-22, IEC 60332-1, IEC 60754, and IEC 61034
- For solid conductor cable assemblies, see reference cable part number specification sheet / DoP for CPR compliance details
- CM - UL Listed 1863
- Anatel Resolution No.242,2000 (may not apply to all assemblies listed)

### APPLICATION SUPPORT

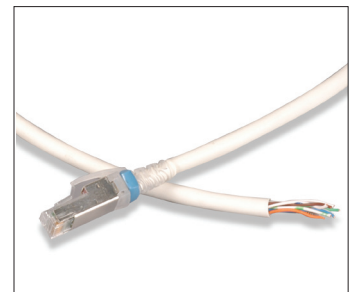
- 10GBASE-T
- 1000BASE-T
- 100BASE-T
- 10BASE-T
- IEEE 802.3af (Type 1 PoE)
- IEEE 802.3at (Type 2 PoE)
- IEEE 802.3bt (Type 3 PoE)
- IEEE 802.3bt (Type 4 PoE)
- Power over HDBaseT (PoH)



Boot ensures proper bend relief, critical for Category 6A performance.



Removable clips allow field colour coding even when cords are connected.



Solid F/UTP assemblies are available for consolidation point and equipment cord applications.

# Product Information

## PERFORMANCE SPECIFICATIONS\*

### ELECTRICAL

Contact Resistance	20 mΩ
Input to Output Resistance	200 mΩ
Min. Dielectric Withstand Voltage (contact to contact)	1000 V DC or AC peak
Insulation Resistance	500 mΩ
Compatibility	Backwards to Cat 5e and Cat 6
Current Rating @ 25° C	1.5 A
Power over Ethernet	Suitable for PoE Type1,2,3,4 and PoH
Power over Ethernet	< 10 mΩ/m @ 10 MHz

### MECHANICAL - GENERAL

Operating Temperature	-10 to 75° C, (14 to 167° F)
Flammability Rating	UL 94 V-0
Green Features	RoHS, lead-free, halogen-free, PVC free
Plug Housing Materials	Polycarbonate
Contact Materials	50 microinches gold plating or equivalent
Plastic Materials	Flame retardant themoplastic
Screen	360 degree enclosure
Marking	P/N, length, performance level, QC

### MECHANICAL - PLUG

Number of Plug Insertion Cycles	2500
Min. Plug Retention Force	50N (11.2 lbf)
Plug Compatibility	Compatible with RJ45
Cable to Plug Tensile Strength (min.)	20 lbs.

### MECHANICAL - CABLE (STRANDED)

Wire Size Range (Nominal)	26 AWG 7x34 Stranded tinned copper
Cable Construction	S/FTP
Cable OD (Nominal)	6.35mm (0.25 in)
Wiring	T568A/B
Jacket type	CM/LSOH
Bend Radius	50mm (2.0 in.)

### MECHANICAL - CABLE (SOLID)

Wire Size Range (Nominal)	23 AWG Solid bare copper
Cable Construction	F/UTP
Cable OD (Nominal)	7.37mm (0.29 in)
Wiring	T568A/B
Jacket type	CM/LSOH
Bend Radius	25.4mm (1.0 in)

## Ordering Information

ZM6A-S(XX)M-(XX) ----- Z-MAX 6A shielded (S/FTP), double-ended, stranded modular cord, clear boot, T568A/B, CM/ LSOH

Length	Jacket Colour
01 = 1m (3.3 ft.)	01 = Black 04 = Gray 07 = Green
1.5 = 1.5m (5 ft.)	02 = White 05 = Yellow 08 = Violet
02 = 2m (6.6 ft.)	03 = Red 06 = Blue 09 = Orange
03 = 3m (9.8 ft.)	
04 = 4m (13.1 ft.)	
05 = 5m (16.5 ft.)	
7.5 = 7.5m (24.6 ft.)	

Add "B" to end of part number for bulk project pack of 100 cords.

CLIP-(XX) ----- Color coding clip, bag of 25

Clip Color
01 = Black 04 = Gray 07 = Green
02 = White 05 = Yellow 08 = Violet
03 = Red 06 = Blue 09 = Orange

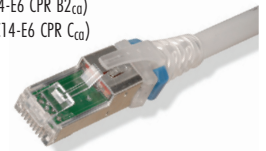


ZC6A-S(XX)M(X)-(X)(X) ----- Z-MAX 6A shielded (F/UTP) solid modular cord, violet jacket, clear boot

Length	Plugs
03 = 3m (10 ft.)	(Blank) = Single-Ended
05 = 5m (16.4 ft.)	D = Double-ended (T568A/B)
10 = 10m (33 ft.)	<b>Cable Jacket</b>
15 = 15m (49 ft.)	L = LSOH (reference cable: 9A6L4-A5, CPR D <sub>ca</sub> )
20 = 20m (65.6 ft.)	M = CM (reference cable: 9A6M4-A5, CPR E <sub>ca</sub> )
	<b>Wiring</b>
	A = T568B
	T = T568A

ZC7-S(XX)M(X)-(X)(X) ----- Z-MAX 6A shielded (S/FTP) solid modular cord, violet jacket, clear boot, LSOH

Length	Plugs
03 = 3m (10 ft.)	(Blank) = Single-Ended
05 = 5m (16.4 ft.)	D = Double-ended (T568A/B)
10 = 10m (33 ft.)	<b>Cable Jacket</b>
15 = 15m (49 ft.)	L = LSOH (reference cable: 9T7L4-E6 CPR B2 <sub>ca</sub> )
20 = 20m (65.6 ft.)	C = LSOH (reference cable: 9T7C14-E6 CPR C <sub>ca</sub> )
	<b>Wiring</b>
	A = T568B
	T = T568A



Because we continuously improve our products, Siemon reserves the right to change specifications and availability without prior notice.

<b>North America</b> P: (1) 860 945 4200	<b>Asia Pacific</b> P: (61) 2 8977 7500	<b>Latin America</b> P: (571) 657 1950/51/52	<b>Europe</b> P: (44) 0 1932 571771	<b>China</b> P: (86) 215385 0303	<b>India, Middle East &amp; Africa</b> P: (971) 4 3689743
---	--	---	--	-------------------------------------	--

**Siemon Interconnect Solutions**  
P: (1) 860 945 4213  
www.siemon.com/SIS