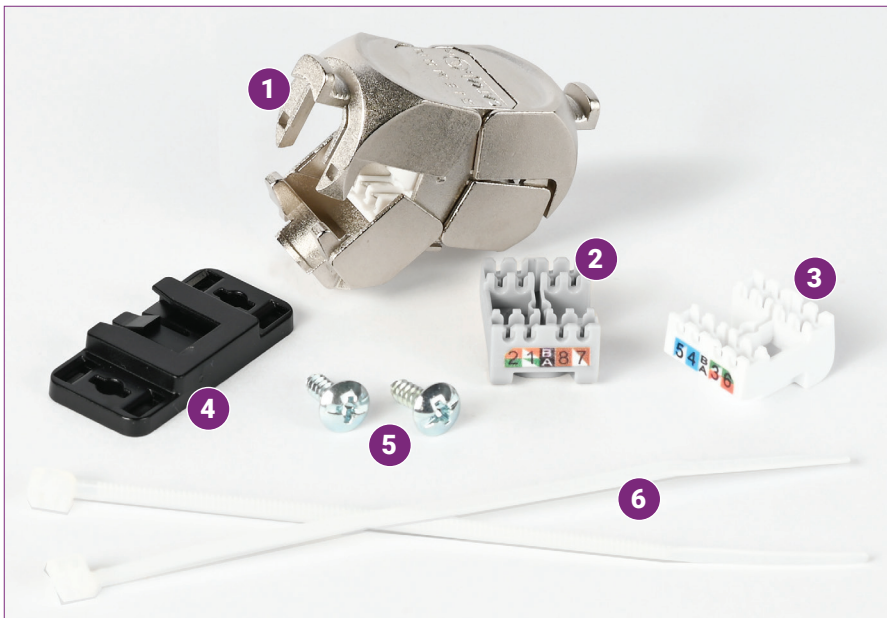


In-Line Connector

Copper Connectivity | Regional Availability — Global

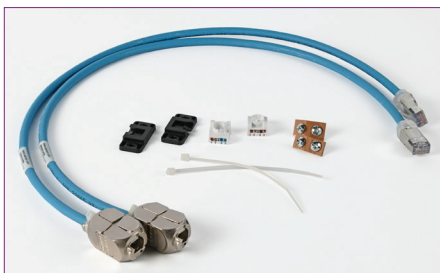


Siemon's In-Line Connector offers quick, reliable high-performance field terminations for custom-length direct connections to wireless access points, security cameras, and any other IP-based and PoE-enabled devices deployed in today's smart building networks. The In-Line Connector meets all Category 6A performance requirements, and it can be terminated to a wide range of solid and stranded cables for maximum flexibility. The In-Line Connector is compliant with UL 1863 and UL 2043 for use in plenum air handling spaces. Intended for indoor applications only unless sufficiently protected for the environment.



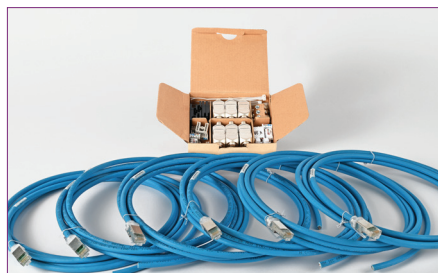
In-Line Connector Components

- | | |
|-----------------------------------|-------------------------|
| 1. In-Line Connector | 4. Mounting Clip |
| 2. Side A Termination Cap (Gray) | 5. Mounting Clip Screws |
| 3. Side B Termination Cap (White) | 6. Cable Zip Ties |



In-Line Connector to RJ45 Patch Cord Assembly

Factory terminated In-Line Connector to RJ45 patch cord solution offers a compact design for tight spaces, speed of installation and reliable performance for your network equipment.



Kitted In-Line Connectors and Single-Ended RJ45 Patch Cords

For field terminations to network devices, an In-Line Connector and a factory-terminated single-ended RJ45 patch cord kit offers limited versatility and speedy installation.



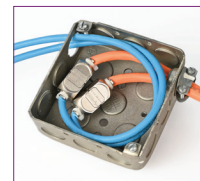
Device Connections

Low-profile RJ45 plug, and boot design freely fits into devices with limited port space.



Indoor to Outdoor Transition

Can be utilized as a consolidation point or as a single indoor to outdoor cable transition.



Compact Design

Optimal size for back box installations and confined spaces.



Mounting Option

Provided with a mounting clip that may be fastened securely with screws or cable ties.



Boot Clips

Optional color clips allow field color coding even when cords are connected.

Features and Applications

- ✓ One In-Line Connector for both UTP and shielded installations.
- ✓ Category 6A rated, backwards compatible for Cat. 5e and Cat. 6 applications.
- ✓ Rated to support all levels of PoE at elevated temperatures and in plenum spaces, the In-Line Connector is part of the PowerGUARD+ family of products.
- ✓ Compatible with 23-24 AWG solid and 24-28 AWG stranded UTP and shielded cables.
- ✓ Termination does not require any proprietary tools, ability to re-terminate up to 20 times.
- ✓ Termination cap color-coding provides T568A or B wiring verification before and after lacing.
- ✓ 28AWG small diameter cable offers a tighter bend radius for easier cable routing and connections to devices.
- ✓ Flexibility to adjust the final device's positioning when installing and testing as a channel or MPTL.

6A Shielded and UTP

ELECTRICAL SPECIFICATIONS

CONTACT RESISTANCE	<10mΩ
INPUT TO OUTPUT RESISTANCE	<100mΩ
MIN. DIELECTRIC WITHSTAND VOLTAGE (CONTACT TO CONTACT)	1000V DC or AC Peak
MIN. DIELECTRIC WITHSTAND VOLTAGE	1500V DC or AC Peak
INSULATION RESISTANCE	100V DC 500mΩ minimum
COMPATIBILITY	Backwards compatible to Category 5e and 6
CURRENT RATING	25°C 1.5A
PoE	Suitable for Type 1, 2, 3, 4 and PoH

MECHANICAL SPECIFICATIONS

OPERATING TEMPERATURE	-40°C to 70°C (-40°F to 158°F)
FLAMMABILITY RATING	UL 94 V-0
GREEN FEATURES	RoHS, Lead- Free, REACH, PVC Free
HOUSING MATERIAL	Zinc-alloy fully shielded
CONTACT MATERIAL	Phosphor Bronze Alloy with 100 micro-inch Tin plating
PLASTIC MATERIAL	Flame Retardant Thermoplastic
DIMENSIONS (L x W x H)	16.8 x 21.6 x 42.2 mm (0.66 x 0.85 x 1.66 in.)

MECHANICAL – TERMINATION

WIRE SIZE RANGE (NOMINAL)	23-24 AWG solid and 24-28 AWG stranded cables
WIRE INSULATION DIAMETER RANGE (MIN/MAX)	0.6-1.2mm (0.024-0.047 in.)
CABLE O.D. (MAX)	9.0mm (0.35 in.)
RE-TERMINATIONS	20
WIRING	T568A/B

STANDARDS COMPLIANCE

ISO/IEC 11801-1 Ed.1.0
IEC 60603-7-41
IEC 60512-99-002 (3 party verified)
IEC 61156
IEC 60603-7-51
ANSI/TIA-568.2-E
ANSI/TIA 1096-A
3rd party channel and component tested
IEEE 802.3af (Type 1 PoE)
IEEE 802.3at (Type 2 PoE)
IEEE 802.3bt (Type 3 and 4 PoE)
Power over HDBaseT™ (PoH)
UL 2043 (air handling spaces)
UL 1863



Data | Power | Reach | Delivered

Ordering Information

In-Line Connector

Part Number	Description
ILC-S6AS	In-Line Connector includes: 6 Connectors, 6 White and 6 Gray Termination Caps, 12 Cable Ties, 12 Mounting Screws, 6 Mounting Clips

In-Line Connector to RJ45 Patch Cord Assembly

ILC - (XX) - 0.5M (XX)

PERFORMANCE	COLOR
TA = Category 6A, S/FTP, Stranded, 26 AWG, T568B, CM/LSOH	02 = White
TB = Category 6A, S/FTP, Stranded, 28 AWG, T568B, CM/LSOH	06 = Blue
TC = Category 6A, F/UTP, Solid, 23 AWG, T568B, Plenum	
TD = Category 6A, UTP, Stranded, 26 AWG, T568B, CM/LSOH	
TE = Category 6A, UTP, Stranded, 28 AWG, T568B, CM/LSOH	
TF = Category 6A, UTP, Solid, 23 AWG, T568B, Plenum	

Contents include (2) 0.5 meter ILC to RJ45 cable assemblies, 2 termination caps, 2 cable ties, 2 mounting screws, 2 mounting clips.

Kitted In-Line Connectors and Single-Ended RJ45 Patch Cords

ILC - (XX) - 003M (XX)

PERFORMANCE	COLOR
KA = Category 6A, S/FTP, Stranded, 26 AWG, T568B, CM/LSOH	02 = White
KB = Category 6A, S/FTP, Stranded, 28 AWG, T568B, CM/LSOH	06 = Blue
KC = Category 6A, F/UTP, Solid, 23 AWG, T568B, Plenum	
KD = Category 6A, UTP, Stranded, 26 AWG, T568B, CM/LSOH	
KE = Category 6A, UTP, Stranded, 28 AWG, T568B, CM/LSOH	
KF = Category 6A, UTP, Solid, 23 AWG, T568B, Plenum	

Content includes: 1 box of 6 In-Line Connectors and components, 6 (3 meter) single-ended RJ45 patch cords.

Eco-Friendly Packaging



SIEMON
SUSTAINABILITY
PLEDGE



Accessories

Color Coding Clips, Bag of 25

CLIP - (XX)

PERFORMANCE		
01 = Black	04 = Gray	07 = Green
02 = White	05 = Yellow	08 = Violet
03 = Red	06 = Blue	09 = Orange

Note: Clips are not included and sold separately.



SCAN TO DOWNLOAD
SPEC SHEET

Because we continuously improve our products, Siemon reserves the right to change specifications and availability without prior notice.

North America
P: (1) 860 945 4200

Mexico
P: (521) 556 387 7708/09/10

Latin America
P: (571) 657 1950/51/52

Europe
P: (44) 0 1932 571771

Asia Pacific
P: (61) 2 8977 7500

Siemon OEM Technologies
P: (1) 860 945 4213
www.siemon.com/OEM

China
P: (86) 215385 0303

India, Middle East & Africa
P: (971) 4 3689743