

Secor® Alarm & Access Control Products

Where quality, price and service ALL count



Distributed by:



11/06



Secor® Alarm Products

Where quality, price and service ALL count

- **Field Proven High Quality**
- **Competitive Price and Reliable Service**



WPO6 Combo Siren/Strobe (outdoors) with or without internal backup battery

- High quality siren and long-life continuous rated xenon tube built in
- PCB double side conformal lacquered - resistant to corrosion and electric leak.
- High quality UV stabilised case
- Weather proof
- Front and back tamperers
- Independent siren/strobe operation
- Satellite type (with internal backup battery) part number: WPO6/ba

Voltage:	12VDC
Siren Current:	130mA
Strobe Current:	110mA
SPL:	100dB/m
Size:	202(L x 112(W) x 70mm(H)



WP18 Super Combo Siren/Strobe (outdoors)

- Large size giving a distinctive warning
- Twin piezo giving 116dB/m
- PCB double side conformal lacquered - resistant to corrosion and electric leak
- High visibility and long life (5 million times) xenon strobe
- Quality micro switch used as tamper switch
- UV treated ABS case
- Internal backup battery version optional

Voltage:	12VDC
Strobe Current:	120mA
Twin Piezo Current:	550mA
SPL:	116dB/m
Size:	280(L x 160(W) x 62mm(H)



WP95 Camouflaged Combo Siren/Strobe (indoors)

- High quality siren and blue strobe built in
- Aesthetic appeal
- Independent or combined siren/strobe operation

Voltage:	12VDC
Siren Current:	230mA
Strobe Current:	110mA
SPL:	100dB/m
Size:	122(L x 73(W) x 45mm(H)

Piezo Siren (indoors)



WPO8 Top Hat Piezo

Voltage:	12VDC
Current:	110mA
SPL:	105dB/m



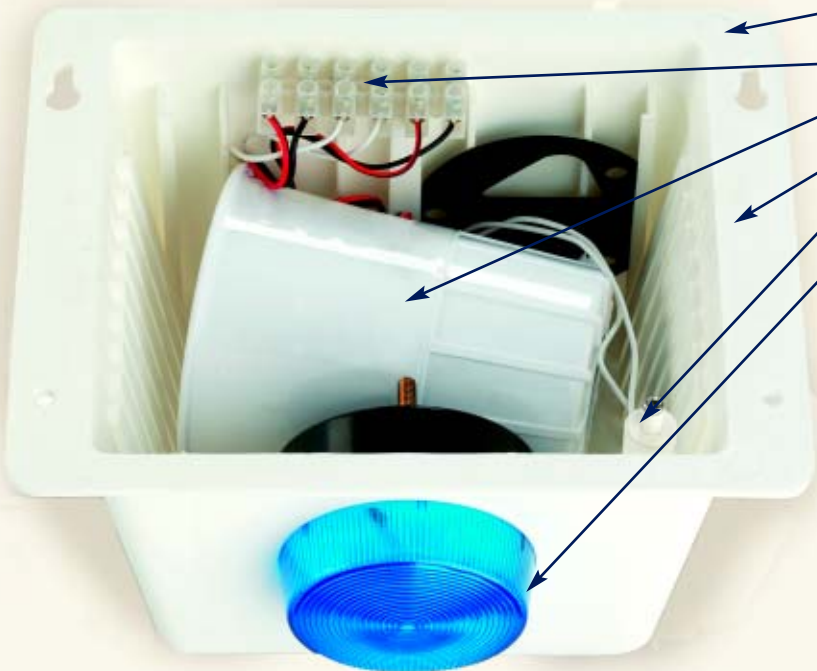
WPO5 Flush Mount Piezo

Voltage:	12VDC
Current:	110mA
SPL:	105dB/m

Secor® Alarm Products

Where quality, price and service ALL count

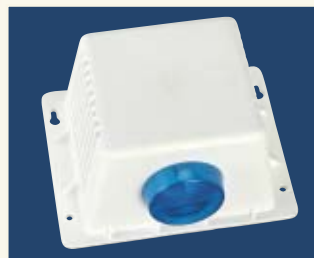
SC03 Siren Cover Kit (outdoors)



- All-in-one - easy for sales, installation, order and logistics
- All pre-wired with a terminal block and mounting template - installers will love it
- High quality strobe and horn speaker (or siren) included; EMC approval with C tick
- Plastic cover is highly UV treated and weather-proof
- Only use best quality reed tamper switch - no false alarm.
- Compact design (200 x 155 x 110mm) with half-extruded blue strobe - small is less ugly
- Also available in beige

Ordering Information:

- SC03/ho - kit with horn speaker
- SC03/si - kit with siren
- SC03/co - kit with combo siren/horn speaker
- SC03/co/top - kit with combo and top hat piezo



Siren and Horn Speaker

Type:	Siren, Horn Speaker and Combo
Sizes:	88, 100, 134mm
Output:	10, 15, 20W
SPL:	110, 115, 120dB/m
Typical Colour:	white & black
Typical Voltage and Current:	12VDC and 380mA (88mm siren)

Ordering Information:

- WS35 - 88mm siren
- WH35 - 88mm horn speaker
- WS35/c - 88mm combo siren/horn speaker
- WS36 is 100mm and WS37 is 134mm



WH44 Flush Mount Horn Speaker

Output:	20W. 400Hz - 6KHz
Impedance:	8 Ohm
Size:	161 x 127 x 44mm



ML02 Blue Strobe

- Long -life continuous rated xenon tube
- Two stud fixing
- 12VDC, 110mA

Secor® Reed Switches

Where quality, price and service ALL count

- World class benchmarked
- OKI reed switch inside
- Crush resistant
- Wider operating gap, more tolerance and less false alarm



WM88 roller shutter door

- Size: Reed switch 106 x 36.5 x 10mm
Magnet 106 x 15.5 x 16mm
Bracket 107 x 50 x 50mm
- Gap 65mm
- Extra wide gap
- 600mm armoured cable (stainless)
- Robust constructed and epoxy sealed - no corrosion
- Universal mounting with L bracket



WSS60 extra wide-gap surface mount

- Size: 90(L) x 13.5(W) x 18.5(H) mm
- Gap: 60mm
- Colour: white, black, beige, brown, grey, green and yellow
- Reed switch epoxy sealed
- Easy to install and solder



WSF46 wide gap press to fit

- Size: 9.5mm(Dia) x 32mm(L)
- Gap: 28mm
- Colour: white and brown



WSS14 mini surface mount

- Size: 33(L) x 7(W) x 13(H) mm
- Gap: 30mm
- Adhesive or screw mount
- Mid lead



WSF47 truly mini

- Size: 9.5mm(Dia) x 15mm(L)
- Gap: 15mm
- Colour: white and brown



WSF41 steel door 19mm

- Size: 19mm(Dia) x 21mm(L)
- Gap: 35mm
- Colour: white and brown



WR32 tamper switch with adjustable plunger

- Size: 15mm(Dia) x 47mm(L)
- Plunger length adjustable by top screw
- Stainless top screw and spring
- With plastic adaptor to fit the hole in the alarm cover
- No false alarm



WSF42 steel door 25mm

- Size: 25mm(Dia) x 30mm(L)
- Gap: 35mm
- Colour: white and brown



WSF52 tamper switch with plunger

- Size: 19mm(Dia) x 27mm(L)
- Quality reed tamper switch
- Comes with flange



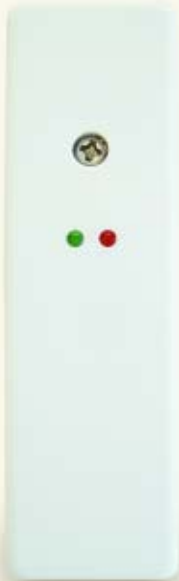
WSF43 stubby press to fit

- Size: 9.5mm(Dia) x 19mm(L)
- Gap: 20mm
- Colour: white and brown

All Reed Switches come with standard wire 22 AWG 18" in length.

Secor® Alarm Products

Where quality, price and service ALL count



WSD01 Shock Sensor

- Piezoelectric transducer is applied
- Wide range of sensitivity selection - dual stage and linear sensitivity adjustment
- Pulse counting selection - one or two pulses
- Non-latching (momentary) and Latch option
- Dual LEDs indicating power and alarm
- Alarm relay output. NC fail safe operation
- Tamper switch (top cover) is built in
- Moisture repelling rubber grommet is included
- Easy and fast installation

Power:	9-16VDC
Current:	Quiescent 15mA: Alarm 18mA
Operating temp.:	-10 to +55°C
Relay rating:	150mA 24V: 10 Ohm resistor in series
LED indication:	Red=Alarm: Green=Power
Pulse counting:	One or two
Size:	21 x 26 x 87mm



DWS100 Break Glass Switch

- Labelled with Emergency Door Release
- Test switch is included
- Colours available: Green and white
- Spare glass is available in packs of fives



WPB10 Emergency Switch

- SPDT contacts
- Colour: White
- Size: 76 x 14 x 14mm



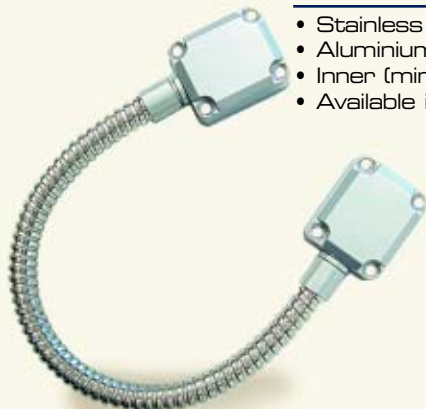
WEB555 Panic Button

- SPDT contacts
- Colour: Beige
- Size: 53 x 53 x 27mm

Cable Protector

DWM300 Heavy Duty Cable Protector

- Stainless Cable Tube
- Aluminium caps at both ends
- Inner (min) dia 8mm: Outer 14mm
- Available in 300mm (DWM300)
450mm (DWM450)
600mm (DWM600)



DWD30 Cable Protector

- Stainless Cable Tube
- Plastic caps at both ends
- Inner (min) dia 6.3mm: Outer 10mm
Suitable for Fig8 24/0.20 and screened 4 wire cable
- Available in 300mm (DWD30)
600mm (DWD60)



Secor® Access Control

Where quality, price and service ALL count



WEL1911

- UL listed; IP rate 65
- Stainless steel flush button/ Standard stainless steel plate
- Illuminated green LED, 12V
- Two isolated contacts: NO/NC

Dimensions:
W70 x H115 x D32mm



WEL2411

- Square button/Standard stainless steel plate
- Illuminated green, 12V
- SPDT contacts

Dimensions:
W70 x H115 x D50mm



WEL2421

- Round button/Standard stainless steel plate
- Illuminated green, 12V
- SPDT contacts

Dimensions:
W70 x H115 x D50mm



WEL2431

- Rectangular button/ Standard stainless steel plate
- Illuminated green, 12V
- SPDT contacts

Dimensions:
W70 x H115 x D50mm



WEL2210

- Twist to Rest mushroom button/Standard stainless steel plate
- Two isolated contacts: NO/NC

Dimensions:
W70 x H115 x D41mm



WEL2220

- Momentary mushroom button/ Standard stainless steel plate
- Two isolated contacts: NO/NC

Dimensions:
W70 x H115 x D41mm



WEL2231

- Shrouded button/Standard stainless steel plate
- Illuminated green, 12V
- Two isolated contacts: NO/NC

Dimensions:
W70 x H115 x D57mm



WEL2241

- Flush button/Standard stainless steel plate
- Illuminated green, 12V
- Two isolated contacts: NO/NC

Dimensions:
W70 x H115 x D37mm



WES1911

- UL listed; IP rate 65
- Stainless steel flushbutton/Architrave stainless plate
- Illuminated green LED, 12V
- Two isolated contacts: NO/NC

Dimensions: W30 x H75 x D32mm



WES1651

- Mushroom button/Architrave stainless steel plate
- Illuminated green LED, 12V
- Two isolated contacts: NO/NC

Dimensions: W30 x H75 x D28mm



WES1611

- Stainless steel flush button/Architrave stainless steel plate
- Illuminated green LED, 12V
- SPDT contacts
- Non-illuminated button available on request - Part Number WES1610

Dimensions: W30 x H75 x D34mm



WES2241

- Flush button/Architrave stainless steel plate
- Illuminated green LED, 12V
- Two isolated contacts: NO/NC

Dimensions: W30 x H75 x D37mm

**Custom plate labelling available on request.
All buttons are of high quality and durability.**

Not all of SECOR's Alarm and Access Control products are included in this brochure. Enquiries on products not shown here are welcome.