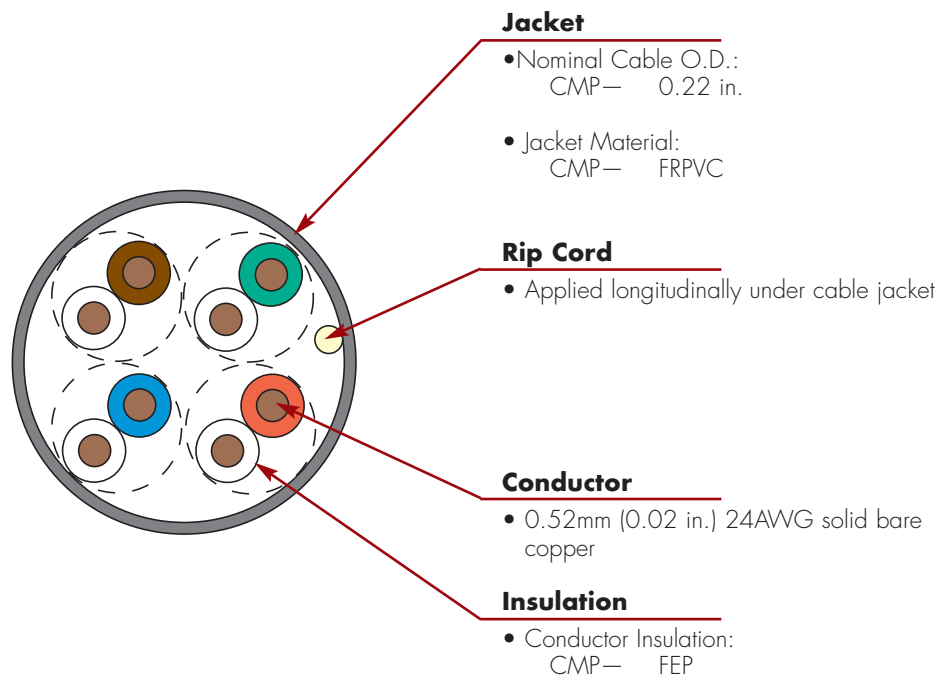
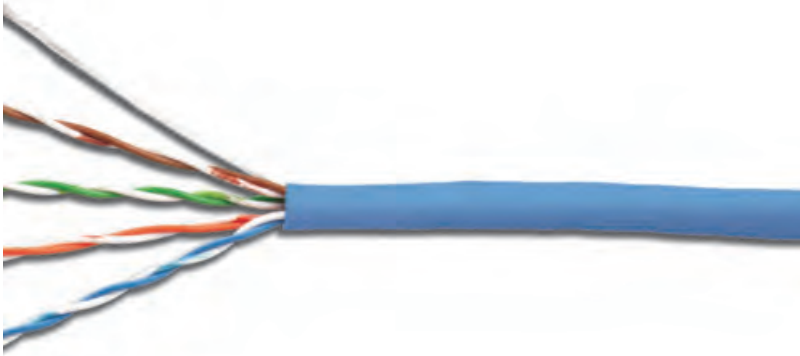


Solution 6™ UTP Cable (North America)

Solution 6 cable meets or exceeds all ANSI/TIA and ISO/IEC category 6 transmission performance specifications. Combine our high performance category 6 connectivity with Solution 6 cable and the result is a system with excellent electrical performance for optimum applications support.

The Solution 6 Plenum cable design eliminates the central isolation member common to many category 6 UTP cables, reducing overall cable diameter. This reduces pathway size requirements, carton materials and provides more efficient shipping options for a greener installation.



CABLE FEATURES:

- Nominal jacket OD: 0.22 in.
- 24 AWG 0.52mm (0.02 in.) solid (non-tinned) copper
- Reverse sequential numbering
- Round jacket
- Jacket material is lead free
- 75° C temperature rating

STANDARDS COMPLIANCE:

- ISO/IEC 11801-1 Ed.1.0
- IEC 61156-5
- TIA-568-C.2
- UL CMP
- RoHS

APPLICATIONS SUPPORT:

- 1000BASE-T
- 100BASE-T
- 10BASE-T
- IEEE 802.3af (Type 1 Poe)
- IEEE 802.3at (Type 2 Poe)
- IEEE 802.3bt (Type 3 Poe)
- IEEE 802.3bt (Type 4 Poe)
- Power over HDBaseT (PoH)

Product Information

ELECTRICAL SPECIFICATIONS

DC Resistance	<8.8Ω/100m
DC Resistance Unbalance	5%
Mutual Capacitance	5.2 nF/100m
Capacitance Unbalance	<330 pF/100m
NVP	67%
LCL	30-10 log(f/100) dB
Delay Skew	≤45ns

PHYSICAL PROPERTIES

	CMP
Pulling Tension (max)	110N (25 lbf)
Bend Radius (min)	25mm (1 in.)
Installation Temperature	0 to 50°C (+32 to 122°F)
Storage Temperature	-20 to 75°C (-4 to 167°F)
Operating Temperature	-20 to 75°C (-4 to 167°F)

Part

Description

9C6P4-E2-(XX)ARXAPlenum (CMP, CSA FT6) 305m (1000 ft.) Reellex

Use (XX) to specify jacket color:

01 = black, 02 = white, 03 = red, 04 = gray, 05 = yellow, 06 = blue, 07 = green,
08 = violet, 09 = orange

TRANSMISSION PERFORMANCE

GUARANTEED WORST CASE SIEMON TYPICAL

Frequency (MHz)	Insertion Loss (dB)		NEXT (dB)		PS NEXT (dB)		ACR-F (dB)		PS ACR-F (dB)		Return Loss (dB)		ACR-N (dB)		PS ACR-N (dB)		Propagation Delay (ns)	
	2.0	1.9	74.3	90.8	72.3	87.4	67.8	79.8	64.8	79.4	20.0	27.8	72.3	88.9	70.3	85.5	570	516
4.0	3.8	3.6	65.3	77.8	63.3	74.4	55.8	68.3	52.8	67.7	23.0	31.4	61.5	74.2	59.5	70.8	552	500
10.0	6.0	5.7	59.3	70.2	57.3	68.4	47.8	60.5	44.8	59.7	25.0	31.5	53.3	64.5	51.3	62.7	545	494
16.0	7.6	7.3	56.2	65.5	54.2	63.0	43.7	56.5	40.7	55.6	25.0	33.2	48.7	58.3	46.7	55.8	543	492
20.0	8.5	8.2	54.8	64.9	52.8	62.7	41.8	54.6	38.8	53.6	25.0	31.6	46.3	56.8	44.3	54.6	542	491
31.25	10.7	10.2	51.9	60.2	49.9	57.0	37.9	51.0	34.9	49.8	23.7	31.4	41.3	50.1	39.3	46.9	540	489
62.5	15.4	14.7	47.4	55.9	45.4	55.1	31.9	46.1	28.9	45.6	21.5	33.5	32.0	41.5	30.0	40.4	539	488
100.0	19.8	18.8	44.3	52.5	42.3	50.4	27.8	42.8	24.8	41.5	20.1	30.5	24.5	34.2	22.5	32.0	538	487
160.0	25.6	24.1	41.2	51.8	39.2	50.4	23.7	43.8	20.7	40.6	18.7	32.3	15.6	27.9	13.6	26.4	537	486
200.0	29.0	27.1	39.8	49.1	37.8	47.2	21.8	37.1	18.8	35.7	18.0	30.3	10.8	22.5	8.8	20.2	537	486
250.0	32.8	30.6	38.3	45.1	36.3	43.5	19.8	33.1	16.8	30.9	17.3	34.7	15.5	15.1	3.5	13.5	536	485
300.0*	-	34.7	-	43.8	-	42.1	-	27.9	-	27.3	-	28.6	-	10.0	-	7.6	-	485
400.0*	-	40.7	-	42.8	-	40.4	-	27.5	-	27.0	-	23.6	-	3.1	-	-0.2	-	485
500.0*	-	46.0	-	41.5	-	39.8	-	30.4	-	29.5	-	28.5	-	-3.5	-	-5.2	-	485
550.0*	-	48.7	-	42.8	-	39.7	-	27.2	-	26.6	-	22.0	-	-5.4	-	-8.5	-	485

*Values for frequencies above industry requirements are for information only.

All performance based on 100 meters (328 ft.).

Because we continuously improve our products, Siemon reserves the right to change specifications and availability without prior notice.

Worldwide Headquarters
North America
Watertown, CT USA
Phone (1) 860 945 4200

Regional Headquarters
Europe Russia Africa
Chertsy, Surrey, England
Phone (44) 0 1932 571771

Regional Headquarters
China
Shanghai, P.R. China
Phone (86) 215385 0303

Regional Headquarters
Latin America
Bogota, Colombia
Phone (571) 657 1950/51/52

Regional Headquarters
India Middle East
Dubai, United Arab Emirates
Phone (971) 4 3689743

Regional Headquarters
Asia Pacific
Sydney, Australia
Phone (61) 2 8977 7500

Siemon Interconnect Solutions
Watertown, CT USA
Phone (1) 860 945 4213 US
www.siemon.com/SIS