

Northern[★]

CUSTOMISED SERVERS

DATASHEET

OVERVIEW

The Northern range of workstations have been custom designed for the requirements of the security industry and provide a complete selection of machines suitable to most video management systems or the Inner Range Integrity integrated access control & security system.

The flexible design of the Northern Cube is not only a powerful workstation PC, but also provides an option as a management and recording server for Milestone, Hanwha Wisenet Wave, Hik-Central or an Inner Range Integrity System. With 2x 3.5" HDD slots onboard an additional 24TB of storage can be added. There is an option to add a dedicated workstation grade NVIDIA Quadro graphics card which allows for up to 4 monitors. The Northern Cube can be customised to suit the requirements of the specific installation so please contact Atlas Gentech for more configuration options.

ITEM CODE	DESCRIPTION
NOR-WS1-CUBE	Northern Workstation, Server, Mini Cube, i5, 8GB, 256GB, SSD, Windows 11 Pro, 3 Year Warranty
NOR-WS2-CUBE	Northern Workstation, Server, Mini Cube, i7, 16GB, 512GB, SSD, Windows 11 Pro, 3 Year Warranty
NOR-WS3-CUBE	Northern Workstation, Server, Mini Cube, i7, 16GB, 512GB, SSD, Quadro T400, Windows 11 Pro, 3 Year Warranty



FEATURES

- Compact Mini Cube Form Factor
- Powerful Gen Intel i5 or i7 CPU
- Intel GPU Dual Monitor Output
- DDR4 RAM (8GB, 16GB and 32GB Options)
- 1x HDMI, 1 x DisplayPort
- On board WIFI 6 802.11ax
- 14th Gen CPUs
- T400 Graphics Card Option with 4x Mini Display Ports
- 2 x 3.5 HDD Expansion Option
- Solid State OS Drive (256GB or 512GB options)
- Windows 11 Pro
- Milestone/Hanwha Wave/Hik-Central Client or Server
- Inner Range Integrity Server or Client
- Further customisations are available

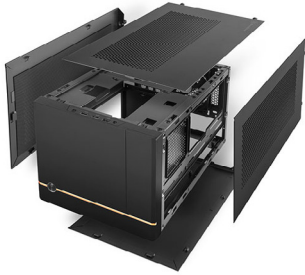
ADDITIONAL INFORMATION

Warranty	3 Years
NOR-WS1-CUBE max number of cameras	42
NOR-WS1-CUBE max incoming bandwidth	200Mbps
NOR-WS2 & WS3 max number of cameras	64
NOR-WS2 & WS3 max incoming bandwidth	300Mbps

Northern[★]

CUSTOMISED SERVERS

DATASHEET



Modular design with 4 removable panels
(top, left, right, bottom)



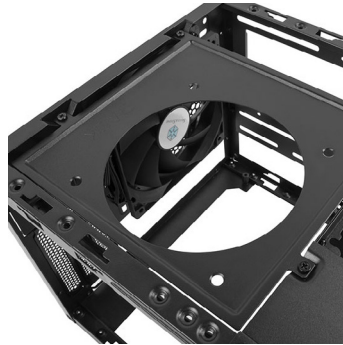
Supports 3 slot full length graphics cards



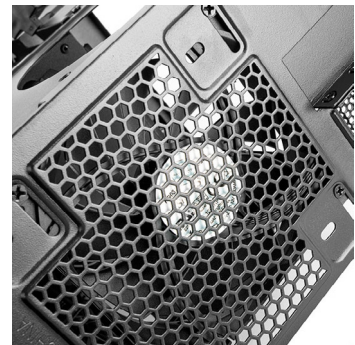
Supports 30 series graphics cards



Adjustable graphics card holder



Top 120mm fan bracket



Rear 120mm / 140mm fan slot



Front I/O port includes: USB 3.0 x 2, USB
2.0 x 1, combo audio x 1



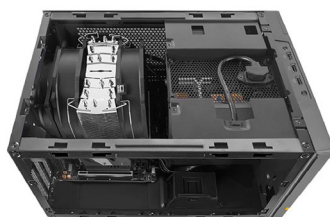
External 5.25" drive bay



Power button



System built demonstration with All-In-
One CPU cooler



System built demonstration with tower
air cooler

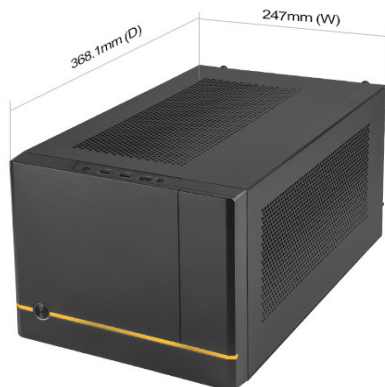
Northern[★]

CUSTOMISED SERVERS

DATASHEET

SPECIFICATIONS

Model No.	SST-SG14B (black)
Material	Plastic front panel, steel body
Motherboard	Mini-DTX, Mini-ITX
Drive Bay	External 5.25" x 1 (without radiator and 3.5" x 1 installed) Internal 3.5" x 2 (without radiator and 5.25" installed) 2.5" x 3
Cooling System	Rear 120mm / 140mm x 1 (120mm black fan x 1 included) Side 120mm / 140mm x 2 Top 120mm
Radiator support	Rear 120mm Side 120mm / 240mm
Expansion slot	3
Front I/O Port	USB 3.0 x 2, USB 2.0 x 1 Combo audio x 1
Power supply	Standard PS2(ATX)
Limitation of VGA card	Length 330mm Width 148mm
Limitation of CPU cooler	Air cooler: 182mm (without top fan) 240mm AIO water block: 55mm
Limitation of PSU	150mm
Net weight	4.89 kg
Dimensions	247mm(W) x 215mm (H) x 368.1mm (D) 19.55 Liters 9.72" (W) x 8.46" (H) x 14.49" (D) 19.55 Liters



AUCKLAND

76 Carbine Road
Mt Wellington
09 574 2700

WELLINGTON

25 Centennial Highway
Ngauranga Gorge
04 477 9142

CHRISTCHURCH

112 Wordsworth Street
Sydenham
03 379 7926

ATLAS GENTECH
DATA COMMUNICATIONS SECURITY

Freephone 0800 732 637
www.atlasgentech.co.nz