



SBP-150NBW

Cabinet



Key Features

- Operating Temperature: -40°C~+65°C (-40°F~+149°F) / 0~100% RH (condensing)
- Material: PC (Polycarbonate), Aluminum
- Dimensions : 360x420x163.1mm
- Weight : 3,960g
- Color : White
- Max. load: 15kg
- Certification: IP66, IK10, NEMA 4X

Compatible Accessories (Optional)



SBP-250WMW



SBP-156WMW



SBP-400WMW



SBP-150PMW



XND-C6083RV



PNV-A9081R



XNO-6083R



QNV-C8083R

SBP-150NBW

Cabinet



Specifications

Environmental

Operating Temperature / Humidity -40°C~+65°C (-40°F~+149°F) / 0~100% RH (condensing)
Humidity control /w Air vent

Storage Temperature / Humidity -50°C~+65°C (-58°F~+149°F) / 0~95% RH

Certification IP66, IK10, NEMA 4X

Mechanical

Color White

Material PC(Polycarbonate), Aluminum

RAL code RAL9003

Product dimensions / weight 360x420x163.1mm / 3,960g

Mount Screw size TR20, T30

Max. load 15kg

Conduit hole 12.7mm(1/2")(M20, 2pcs) / 19.1mm(3/4")(M25, 3pcs)

Supported products
- Installation Solution : SBP-250WMW, SBP-156WMW, SBP-400WMW, SBP-150PMW
- Camera : XND-C6083RV, PNV-A9081R, XNO-6083R, QNV-C8083R
※ For further compatible models, please visit our website or use Toolbox

SBP-150NBW

Cabinet

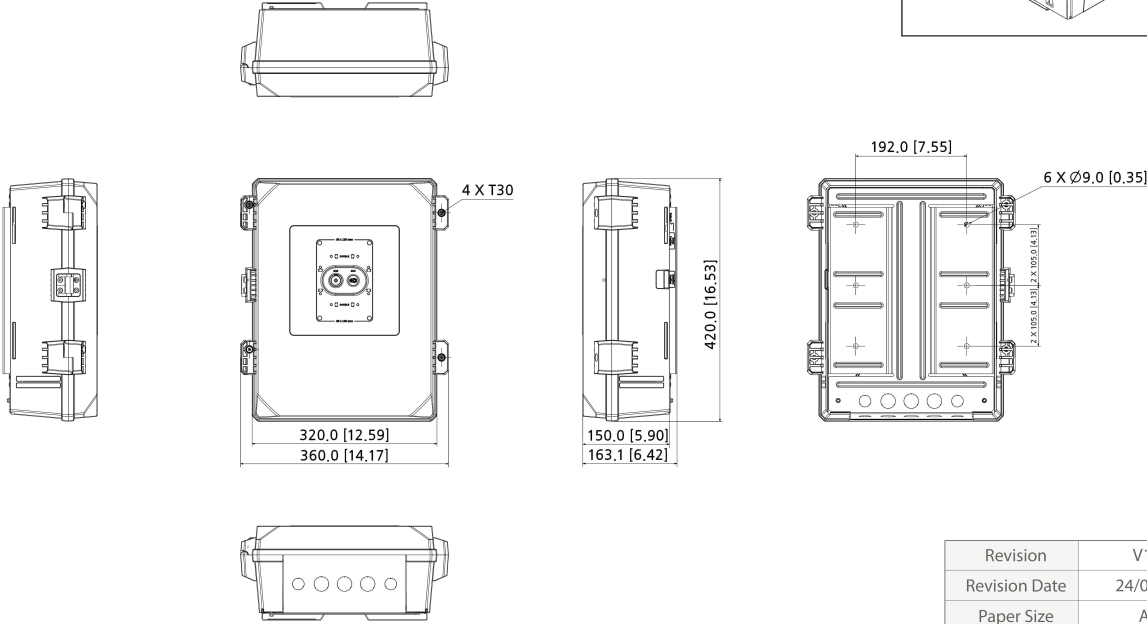
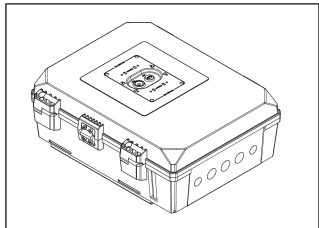


CAD

Unit:mm [inch]

SBP-150NBW Cabinet

Reference image (No scale applied)



Revision	V1.0
Revision Date	24/06/27
Paper Size	A0
Unit	mm [inch]
Scale	1 : 2

© Hanwha Vision Co., Ltd. All right reserved.