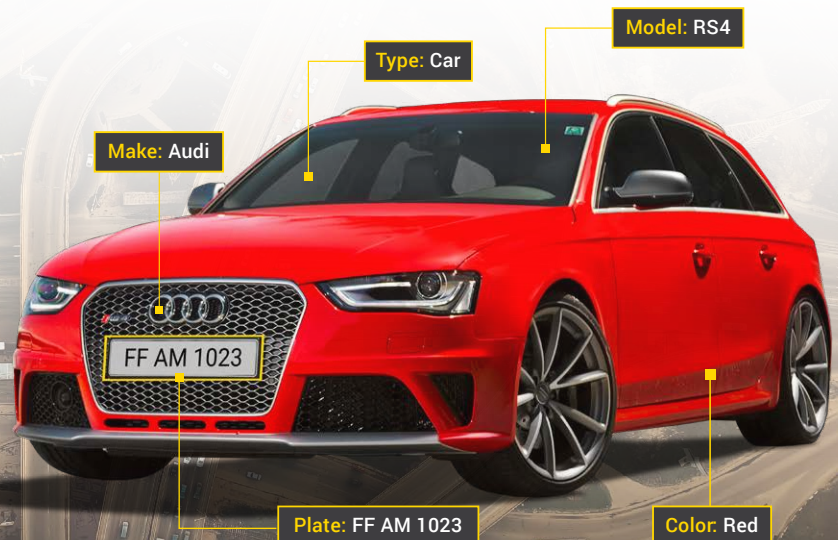


# CAMMRA

**high-speed camera-based application for vehicle license plate, make, model, colour and type recognition**

CAMMRA is an universal vehicle recognition app for various traffic, parking and law enforcement scenarios. The app uses Axis camera image and edge processing power for capture and recognition of all vehicle license plates in high speed and multi-lane environment. Additionally, it recognizes also vehicle make (brand), model and classifies it into vehicle classes and recognizes vehicle colours. As a result, the customer can use the recognized data for vehicle search, raising alarms, triggering barriers or other devices and generate various reports, calculations and data insights realized in dashboards in FF DataFactory or other 3<sup>rd</sup> party software.

- Captures and recognizes vehicle license plates in all speeds and scenarios
- Recognizes vehicle make and model
- Recognizes 11 vehicle colours
- Classifies vehicles in 7 classes
- Detects direction of travel of vehicles
- Transmits data in real-time to FF DataFactory or 3<sup>rd</sup> party system
- Easily integrates with external databases



## An ACAP application for vehicle license plate, make, model, colour and type recognition running on all Axis Communications Artpec 6, 7 and 8 cameras using ACAP open platform

### Product specifications

<b>Supported CPU</b>	Artpec 6, 7 and 8
<b>Recommended cameras</b>	Q1700-LE, P1465-LE, P1455-LE, P3255-LVE, P3265-LVE, Q1656-LE, P3925-LRE, Q1785-LE, Q1798-LE
<b>The number of recognized road lanes</b>	up to 3 (recommendation: highway 1 lane, city 2 lanes)
<b>Recognition speed, km/h</b>	up to 160 km/h
<b>Make and model data set</b>	1000 models, 100 brands
<b>Vehicle colours</b>	11 (black, white, red, green, blue, yellow, orange, brown, beige, silver, grey)
<b>Classification</b>	7 types (car, SUV, LCV, van, truck, bus, moto)
<b>Camera black/white lists capacity</b>	20 000 license plates total (10 000 each)
<b>License plate recognition accuracy</b>	98%
<b>Make and model recognition accuracy</b>	90%

### Additional product features

- Autostart enabled** (app starts automatically after reset/restart)
- Designed for 24/7 operation**
- Time synchronization with NTP server**
- Variable mounting** (recommended height from 1m to 20 m)
- Saves time of recognition with every event** (timestamp)
- Works in real-time mode** (exchanges data automatically and simultaneously)
- Support available on weekdays, working hours**
- Quarterly software updates**
- Corridor mode support**
- Configurable buffer options**
- Event type sending selection and conditions**
- Country installation selection**
- False detections filter available**
- LPR and MMR threshold configuration**
- Multiple endpoints for data sending**
- Secured data sending** (HTTPS, self-signed certificates)

### Main product features

- Detects and recognizes vehicle registration plates** (incl. tractor, trailers, motorcycles etc.)
- Recognizes vehicle make, model, color and type**
- Saves database on the camera**
- Saves screenshots on SD card** (up to 100 000 events)
- Black and white lists management**
- Barrier management**
- Direction detection**
- Multiple recognition zones**
- Full / cropped / downscaled screenshot saving**
- Events storage limiting options**
- Transfers data to the 3rd-party applications**
- Axis access control system integration** (Axis A1001, Axis A91xx)

### Integration

<b>Protocols</b>	ONVIF, VAPIX events, open HTTP management (JSON), TCP, FTP, UTM
<b>Native integration</b>	FF DataFactory, Milestone XProtect
<b>Other systems</b>	Qognify Cayuga (over SAI), Axis Camera Station (Node red), Genetec Security Center (Smart Plate plugin), Invipo Smart city platform, Digifort, Wavestore, Ateas Security, ISS, Fast Protect, EV Track, CathexisVision, Inner Range Integriti
<b>External databases</b>	SNIPR (South Africa), AKV - Automatická kontrola vozidel (CZ), Safercities (New Zealand), Jenoptik TraffiData, Macq M3

### Regional coverage

All european countries + CIS, Turkey, Israel, South Africa, Indonesia, Australia, Canada, USA, Mexico, New Zealand