



OE-CC51D8

## 8MP Cloud IP Dome Camera

*The OE-CC51D8 is a 8MP outdoor dome camera, managed in the cloud, with recording and analytics on the edge.*



### INTEGRATED ANALYTICS

Take advantage of advanced analytics processing for a more intelligent and aware security solution.



### CLOUD CAMERA

Streamline surveillance with an all-in-one video solution, featuring onboard recording and advanced analytics processing.



### AUTOMATIC UPDATES

Reduce the burden on IT with automatic software updates, delivering the latest features and cybersecurity patches.



### HIGH DYNAMIC RANGE

Achieve crystal clear image clarity in diverse lighting with advanced HDR technology.



### ONBOARD RECORDING

Record directly on the camera and access the video seamlessly from the cloud.

## CAMERA SPECIFICATIONS

### OPTICAL

Image Sensor	1 / 2.8" Progressive CMOS
Effective Pixels	8MP (3864 x 2192)
Lens Type	Varifocal Motorized Zoom
Focal Length	3 ~ 9mm
Field of View	115° ~ 36°
Iris	P-Iris
Day / Night	Auto (ICR)
Dynamic Range	Digital Overlap High Dynamic Range
IR Cut Filter	Yes
IR Range	Up to 164'

### VIDEO SETTINGS

Compression	H.264
Video Streams	2
Frame Rate	Up to 30FPS
Image Rotation	0°, 90°, 270°, Image Flip, Image Mirror

### AUDIO

Compression	G.711
Two-way Audio	Supported
Suppression	Supported

### CONNECTIONS

Ethernet	RJ45, 10 / 100Mbps
Alarm	DI x 2, DO x 2 (Terminal Connections)
Audio	Line In x1 / Line Out x1 (Terminal Connections)
Power Source	PoE 802.3af* / PoE+ 802.3at / 12vDC
Onboard Storage	1TB, 1.5TB MicroSD, SDXC

\*internal heater will be disabled

### GENERAL

CPU	Ambarella CV22S66
Analytics	Smart Motion, Person / Vehicle, Intrusion / Loitering, Line Cross Detection
Ingress Protection	IP67
Impact Rating	IK10
Operating Environment	<b>IR Off:</b> -22°~140°F (-30° ~ 60°C) <b>IR On:</b> -40°~122°F (-40° ~ 50°C)
Humidity	90% R.H.
Dimensions	Ø 6.1" x 4.1" (155 x 103mm)
Weight	2lbs (1kg)
Pan / Tilt / Rotate	Pan: 350°   Tilt: 90°   Rotate: 180°
Country of Origin	Taiwan
NDAA Compliant	Yes

## CAMERA SPECIFICATIONS (CONTINUED)

### POWER

Max Power Consumption (IR On)

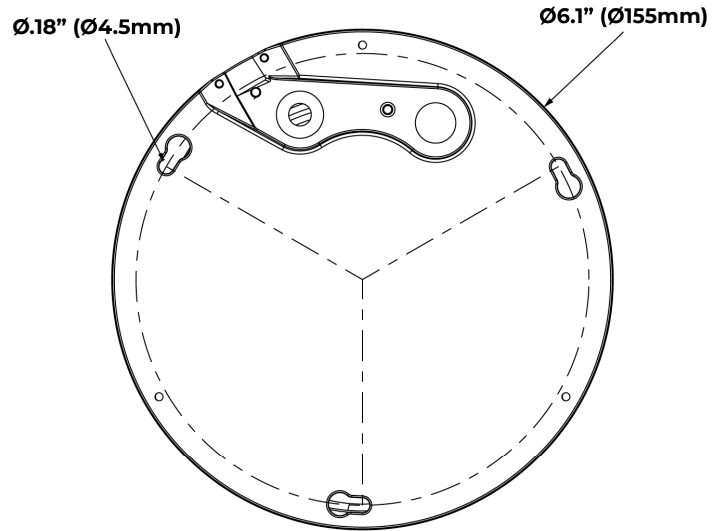
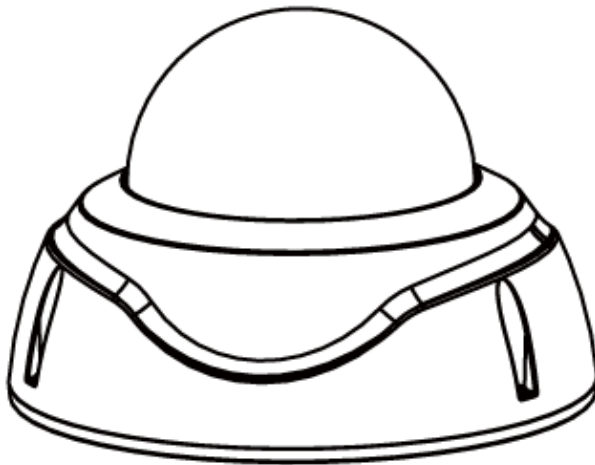
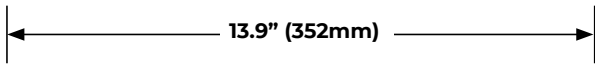
12vDC: 19.2W | PoE+ 802.3at: 22W

### CERTIFICATIONS

Certifications

UL / CE / UKCA / FCC Part 15, Subpart B, Class A

### DIMENSIONS



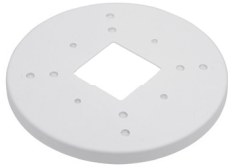
## ACCESSORIES



51-Series Junction Box  
**OE-CA51JB-01**



51-Series Wall Mount  
**OE-CA51WM-01**



51-Series Transfer Plate  
**OE-CA51TP-01**



51-Series Pendant Cap  
**OE-CA51PC-01**



51-Series Pendant Cap  
**OE-CA51PC-01**



Indoor/Outdoor Wall Mount  
**OE-CA00WM-01**



51-Series Pendant Cap  
**OE-CA51PC-01**



Ceiling-Mounted Pole  
**OE-CA00CMP-01**