

# Taxi Onboard Application

# TAXI SECURITY-OVERVIEW

HIKVISION



## Interior Mobile Analog Camera

Onboard video monitoring with the purpose to the passenger belongings loss monitoring.



## Interior Mobile Analog Camera

Onboard video monitoring & ADAS reminder.

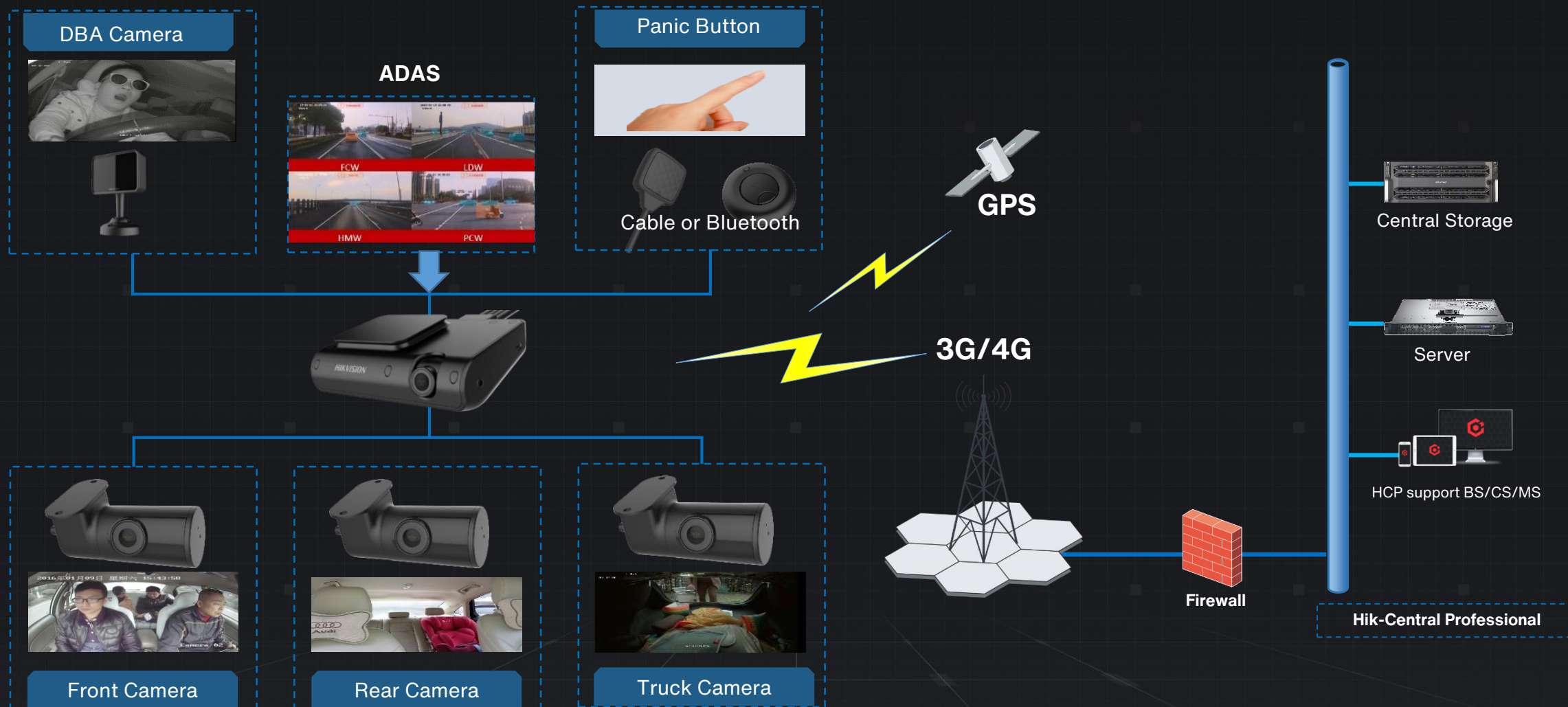


## Interior Mobile Analog Camera

The Anomaly Detection Camera detects dangerous driving behaviors, including tired, yawning, squinting, smoking and camera covered.

# TAXI SECURITY-SOLUTION STRUCTURE

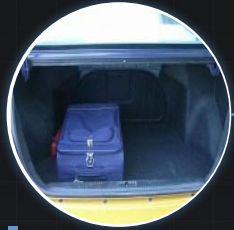
HIKVISION





# TAXI SECURITY-SOLUTION FOCUS

HIKVISION



## Passenger Luggage Record

It is difficult to trace the specific problem when the passenger's luggage is picked up by mistake or taken away by other passengers when a complaint occurs .



## Alarming

When the driver or the passenger feels unset or be held as a hostage. Manually push alarm button to tag the video clip as incident and alert the operator for remotely assistant.



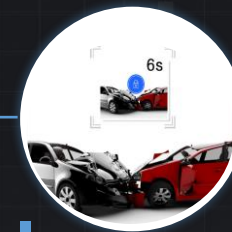
## Post-investigation

All around the video surveillance shall to keep record to provide the evidence of incident such as lost luggage.



## Driver Compliance Supervision

We need a method to awaken the driver from micro sleep to drive prudently with safety awareness.



## Liability Identification

A single accident may lead to a long term of lawsuits due to lack of evidence. To record and protect the video of the accident is financially and legally crucial.

## Speed Monitoring

Unusual behaviors of a vehicle such as speeding are usually warning signs that are hard to be spotted remotely in the first place

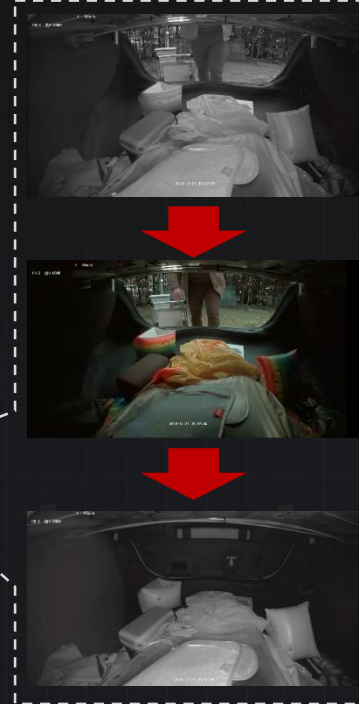
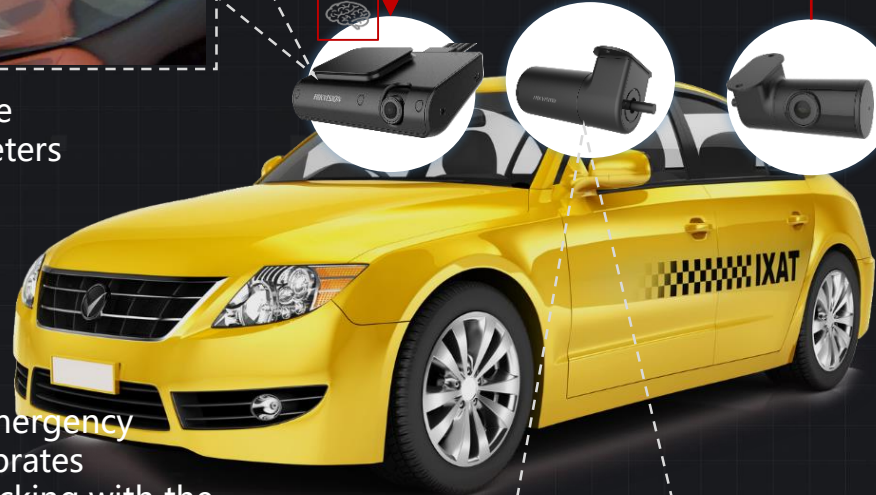
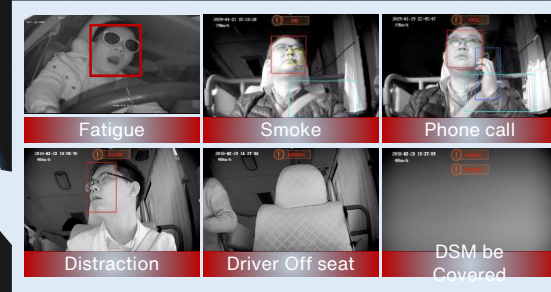
# TAXI SECURITY-VIDEO SECURITY



Towards outside: The front vehicle plate number can be seen clearly up to 13 meters distance. Meanwhile, G4 do the **ADAS**.



The built-in six-axis gyro sensor starts emergency recording when the vehicle crashes or vibrates violently. It supports emergency video locking with the purpose to prevent to be covered by circle, making it a key assistant for post-investigation.

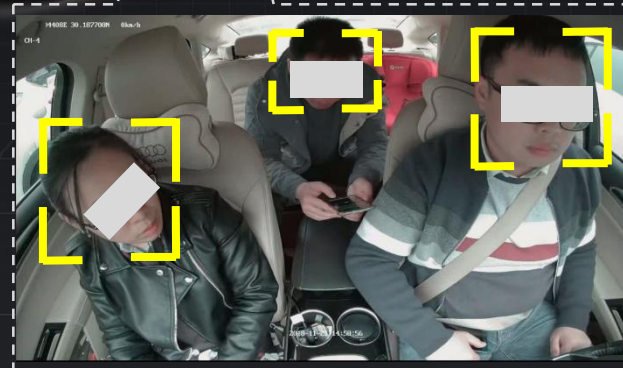


Open the trunk.

The Video shall to switch from black to color automatically.

Turn off the trunk. The Video shall to switch from color to black automatically.

Towards inside : Passenger Counting Safety Monitoring, Lost and found. Moreover. It shall to avoid the driver do not start the taxi meter and conceal the income.



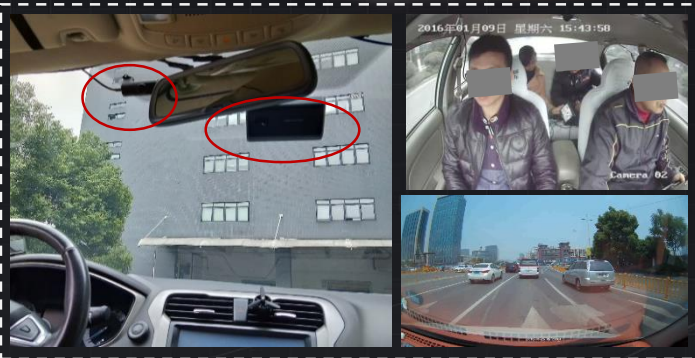
The built-in GPS module shall to provide the real-time trajectory for the map overview.



# TAXI SECURITY- OPERATION DASHBOARD

HIKVISION

G4 is build-in the GPS module and provide the trajectory along with the video on the real-time for the remotely management.

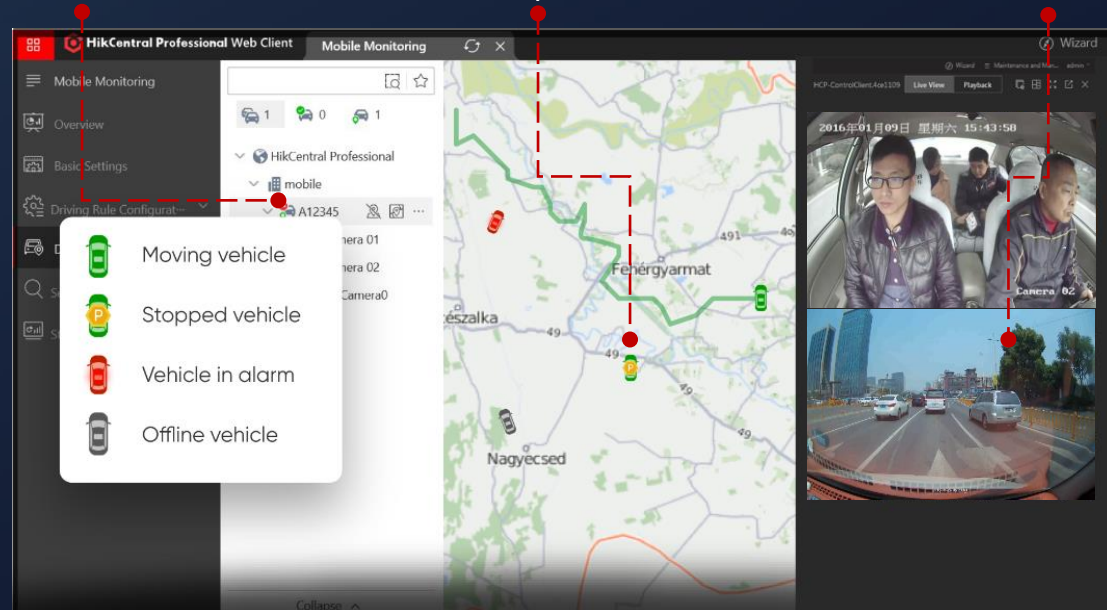


security

- **Centralized management:** Through the unified control panel, various Taxis can be centrally managed on the map.
- **Remotely check:** The security guys can remotely check and track every vehicle information: location, live video, alarming record etc.

## HikCentral Professional Control Panel

- Easy to select vehicle from the list
- Quickly locate vehicles on GIS map.
- Remotely check vehicle inside/outside status via live view.



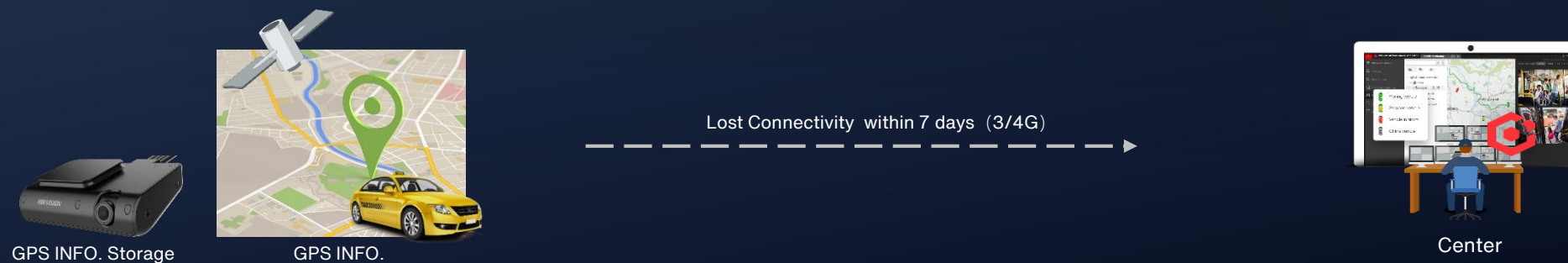
# TAXI SECURITY-DATA INTEGRITY

HIKVISION

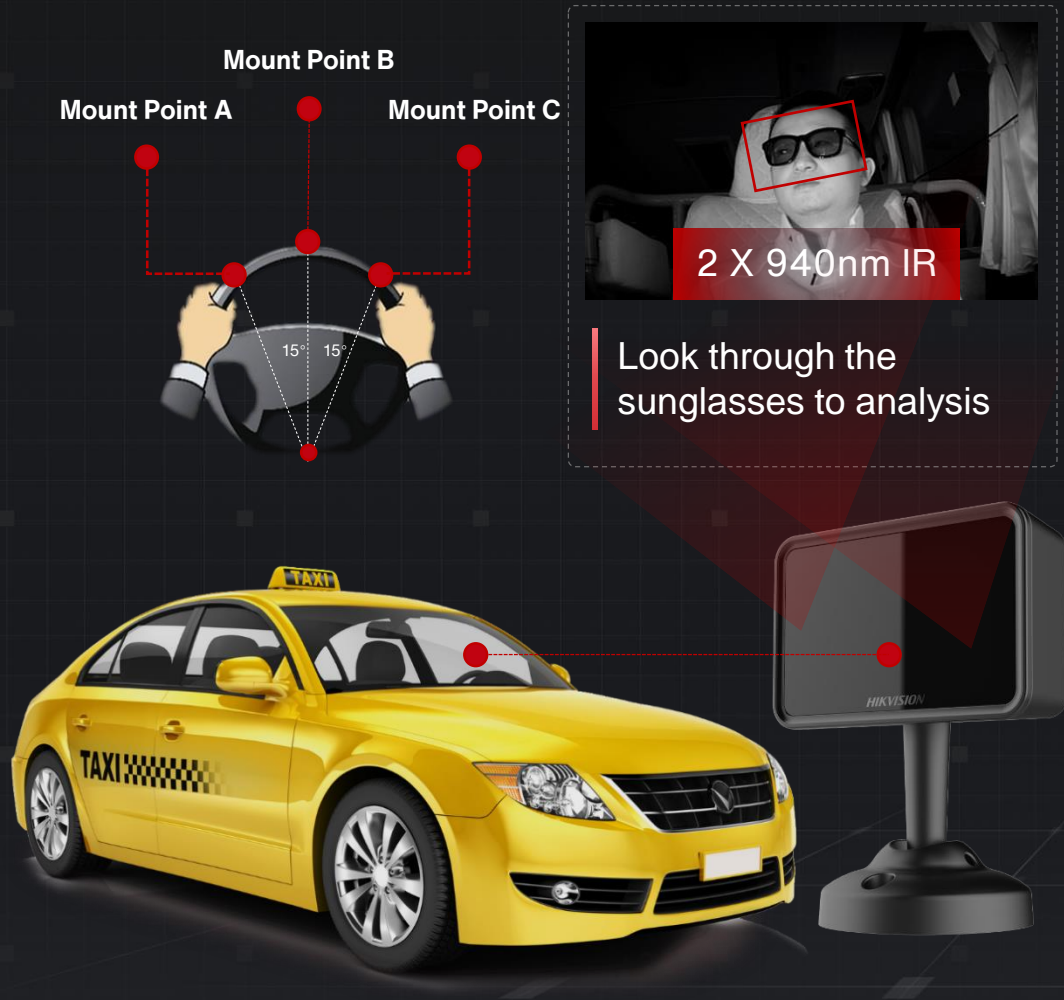
## Important Video Storage



## GPS Storage (ANR)

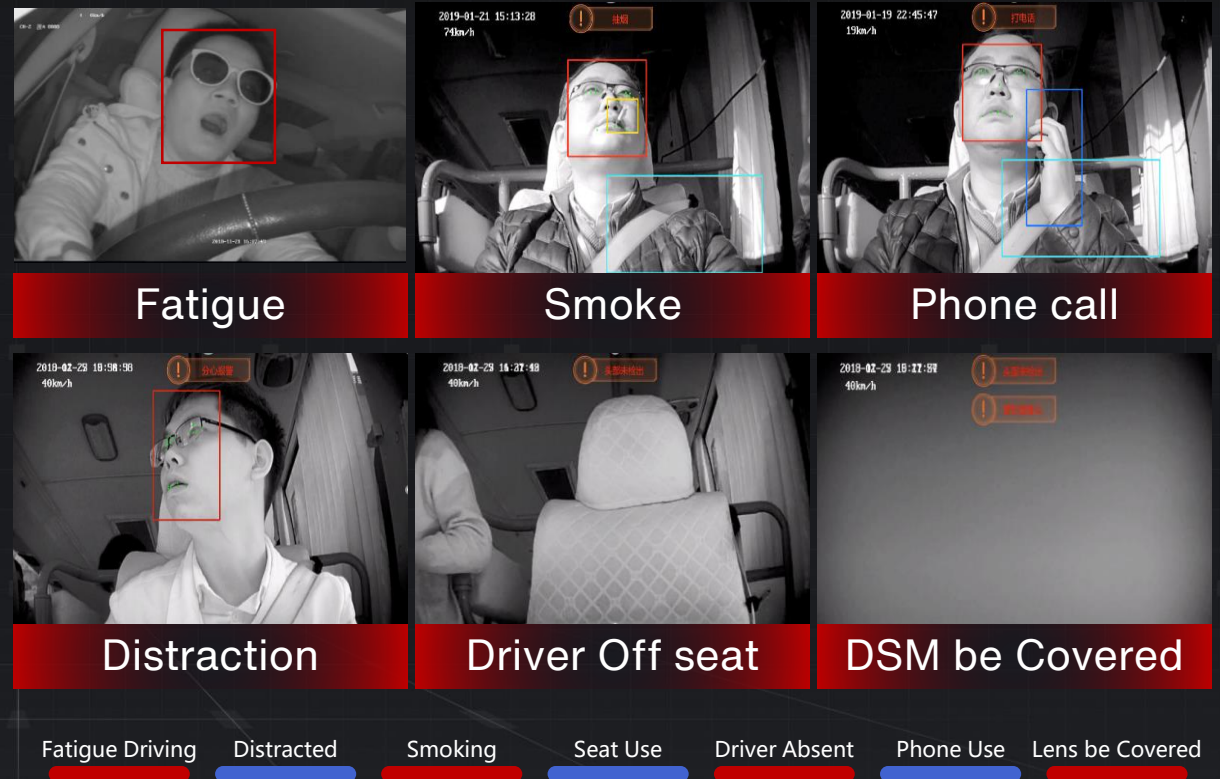


# TAXI SECURITY- DRIVER STATUS MONITORING



Real-time detect and remind the taxi driver

- Auto detects dangerous driving conditions.
- Auto warns the taxi driver in real-time voice.





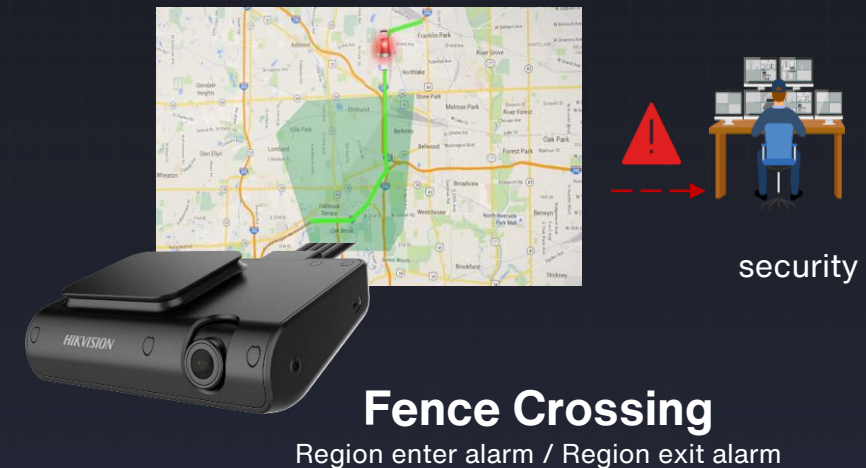
# TAXI SECURITY- ALARMING MONITORING

HIKVISION

- **Within the safe speed protection:** Once vehicle running faster than the limited speed, the MVR shall to send the alarm information to the HCP to remind the security guys to handing.



- **Forbidden area protection:** Once vehicle intruders the preset area, an alarm will be triggered immediately.
- **Permitted area monitoring:** Once vehicle drives out of the permitted area, an alarm will be triggered immediately.



# TAXI SECURITY- ALARM PANEL OPERATION

## Precaution Alarm



Driver

- Eliminate potential risks.
- Real-time warning for safe driving.
- Ask for the help from the center.



### Related functions

DBA Alarm

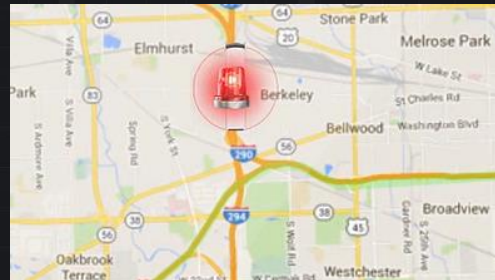
ADAS Alarm

## Alarm Detection



security

- Auto & intelligent detection on various dangerous.
- SOS alert.



### Related functions

Vehicle Status Alarm

DBA Alarm

ADAS Alarm

Fence Crossing

Deviation Alarm

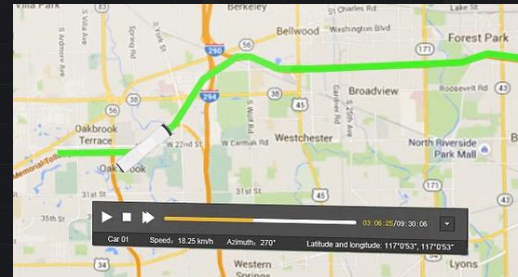
Panic Button

## Alarm checking & handling



security

- Quick & accurate alarm response.



### Related functions



Alarm notification



Remotely check live view



Two-way audio

## Archiving

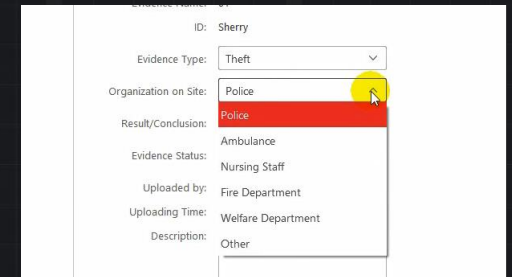


security



Manager

- Classify fragmented evidence.
- Evaluate drivers performance.



### Related functions



Remotely Download



Upload to  
evidence center



Alarm statistical report

# TAXI SECURITY- EVIDENCE COLLECTION



HIKVISION





# TAXI SECURITY- CORE DEVICES

HIKVISION

Main technical specifications	AE-DI5042-G4 (Lite) (GPS+4G)	AE-DI5042-G4 (/AI) (GPS+4G)
Figures		
image	4 MP Sensor, up to 1440P resolution	
video	1440P (customization) /1080P/720P	
audio	MIC voice input、speaker output	
Satellite positioning	GPS、GLONASS	
wireless communications	4G	
Wi-Fi&Bluetooth	Wi-Fi smart phone connectivity、Hotspot and Bluetooth	
Video storage	Double TF card recording, 256GB max each, Loop recording, seamless connection without seconds missing	
Gyro sensor	The built-in gyroscope sensor can start emergency recording when the vehicle is in a collision or severe vibration. Support emergency recording backup lock, delayed shutdown when suffering abnormal power-off.	
Emergency alarm	Support 2 wired emergency alarms, 1 Bluetooth wireless emergency alarm (optional), capture alarm pictures and upload to the platform	
Face Recognition comparison	Dynamic face verification / Long driving warning	
Driving behavior analysis	Not supported	Supports the identification, analysis and voice prompts of the driver's drowsy driving, answering and making phones, smoking, distracted while driving, blocking the camera, and uploading alarm information to the platform

# TAXI SECURITY- CORE DEVICES

HIKVISION



Normal Video Monitoring



Driver Status Monitoring

- ❑ All-round monitoring with the extended three channel camera to provide the most comprehensive evidence. Meanwhile. The remaining one channel do the driver status monitoring for driving safe.
- ❑ Easy and convenient to install on the glass via the electrostatic sticker
- ❑ Alarm is manual or automatic trigger and uploaded to the center could do two-way audio communication
- ❑ Super-capacitor guarantees the most complete footage when switch off in case of sudden system power down
- ❑ ADAS: Forward Collision Warning(FCW), Lane Departure Warning(LDW), Headway Monitoring Warning(HMW), Pedestrian Collision Warning(PCW)
- ❑ DBA: Fatigue driving, distracted, smoking, seatbelt use, driver absent, phone use, lens be covered

Fatigue Driving	Distracted	Smoking	Seatbelt Use	Driver Absent	Phone Use	Lens be Covered
Red	Blue	Red	Blue	Red	Blue	Red

# TAXI SECURITY- CORE DEVICES

HIKVISION



## AE-DI5042-G4

- ❑ The build-in lens with the resolution up to 1440P for picture taking and 1080P for recording
- ❑ FOV:153°(D),127°(H)
- ❑ Extend to 4-ch TVI camera
- ❑ Built-in Mic & speaker
- ❑ Build-in Wi-Fi, Bluetooth, 4G Module
- ❑ Build-in 6axis G-sensor
- ❑ Dual TF Card(up to 128GB for each)
- ❑ Consumption:  $\leq 10$  W
- ❑ CE, FCC, RoHS, WEEE



## AE-VC143T-ITS

- ❑ Progressive Scan CMOS
- ❑ 720P@25fps
- ❑ 0.1Lux@(F1.2,AGCON),0LuxwithIR
- ❑ 2.1 mm, horizontal: 125°, vertical: 80°, diagonal: 148°
- ❑ 5m IR
- ❑ Built-in Mic
- ❑ Supports passenger people counting (working with AE-DI5042-G4)
- ❑ Consumption:  $\leq 2.5$  W
- ❑ CE,FCC, E-Mark



## AE-VC154T-IT

- ❑ 6 mm lens
- ❑ 720p @30fps
- ❑ Min. illumination: 0.1 Lux@(F1.2,AGC ON),0 Lux with IR
- ❑ Supports DBA (working with AE-DI5042-G4)
- ❑ Horizontal: 52° ; Vertical: 28° ; Diagonal: 60°
- ❑ 2\*940nm IR
- ❑ 3 m IR distance
- ❑ SNR: 42dB
- ❑ Consumption:  $\leq 2.5$ W
- ❑ Plastic Case
- ❑ CE,FCC, E-Mark



# TAXI SECURITY- CORE DEVICES

HIKVISION

Dash Camera



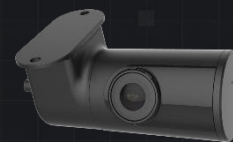
AE-DI5042-G4

DBA camera



AE-VC154T-IT

Extend Camera



AE-VC143T-ITS

Panic Button



AE-IFC00

## HikCentral Professional hardware performance

		Entry level	Middle level	High level
CPU		Intel® Core™ i5-8500 @ 3.00 GHz	Intel® Xeon® E-2124 @ 3.30 GHz	Intel® Xeon® Silver 4110 @ 2.10 GHz
RAM		8 GB	16 GB	16 GB
Number of Devices		300	500	1000
Speed of Handling Driving Events		300 events per second	500 events per second	1000 events per second
Storage	GPS Data	6 Month		
	Statistics Data	3 Years		
	Driving Events	3 Years		

## HikCentral Professional license quotation

**10** Devices



**>10** Devices:

Name	Code	Description
HikCentral-P-MS-Base	401000428	Base package
HikCentral-P-MS-1Unit	401000429	1 device management



THANKS

